



Bernstein

Bernstein AG
Postfach 1164
D-32437 Porta Westfalica

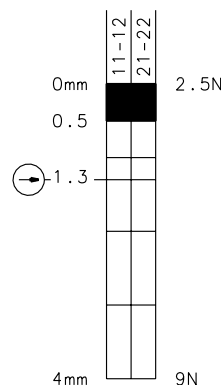
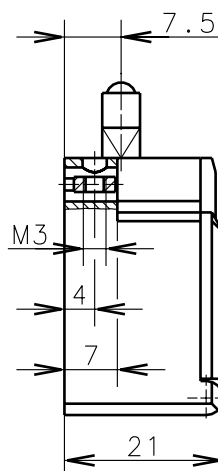
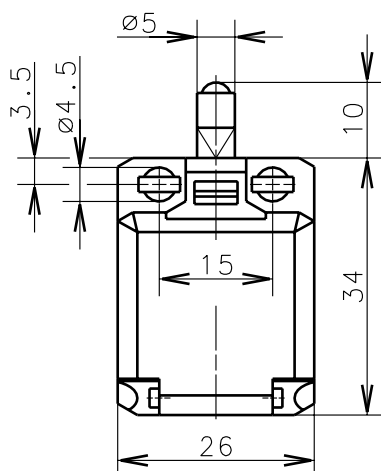
Technical data sheet

C2-A2Z

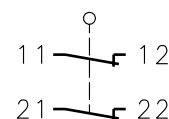
600.8801.003



Positive opening
operation according
to DIN EN 60947-5-1
IEC 60947-5-1



Switching
diagram



Switching
symbol

Tolerance: operating point $\pm 0.25\text{mm}$; actuating force $\pm 10\%$

Mechanical features

Enclosure:

PBT, glass fibre reinforced

Cover:

PC, black

Actuator:

Push bolt (st)

Ambient air temperature:

-30°C up to $+80^{\circ}\text{C}$

Contact type:

2 NC-contacts (Zb)

Mechanical life:

3×10^6 switch operations

Switch frequency:

max. 100/min

Mounting:

from the top 2xM4, from the front 2xM3

Connection type:

4 screw connections (M3.5)

Conductor cross-section:

single core $0.5\text{-}1.5\text{mm}^2$ / litz wire with connector sleeve $0.5\text{-}1.5\text{mm}^2$

Cable entry size:

rectangle $8.5 \times 3.5\text{mm}$

Weight:

approx. 0,02kg

Electrical features

Rated insulation voltage: $U_i = 250\text{ V AC}$

Conventional thermal current: $I_{the} = 10\text{A}$

Max. inrush current:

according to IEC 60947-5-1

Utilization categorie:

AC 15, A300 240V/3A, 120V/6A / DC 13, Q300 250V/0.27A, 125V/0.55A

Standards:

according to EN 60947-1; EN 60947-5-1

Protection class:

IP30 according to EN 60529; DIN VDE 0470 T1

CSA/UL:

10A 300V AC, A300

Short circuit protection: Fuse 6A gL/gG, IEC/EN 60947-5-1, appendix K

Approach possibilities

The push bolt actuator is mainly intended to be actuated along it's axis.
Side actuation will considerably reduce switch life.

Remarks

The moving parts should be oiled periodically.