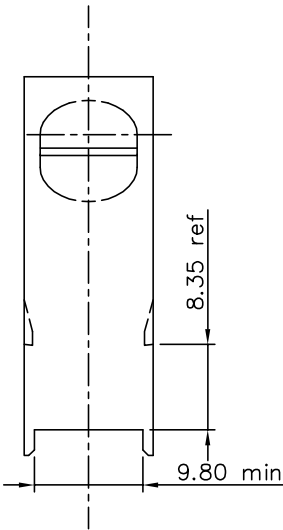
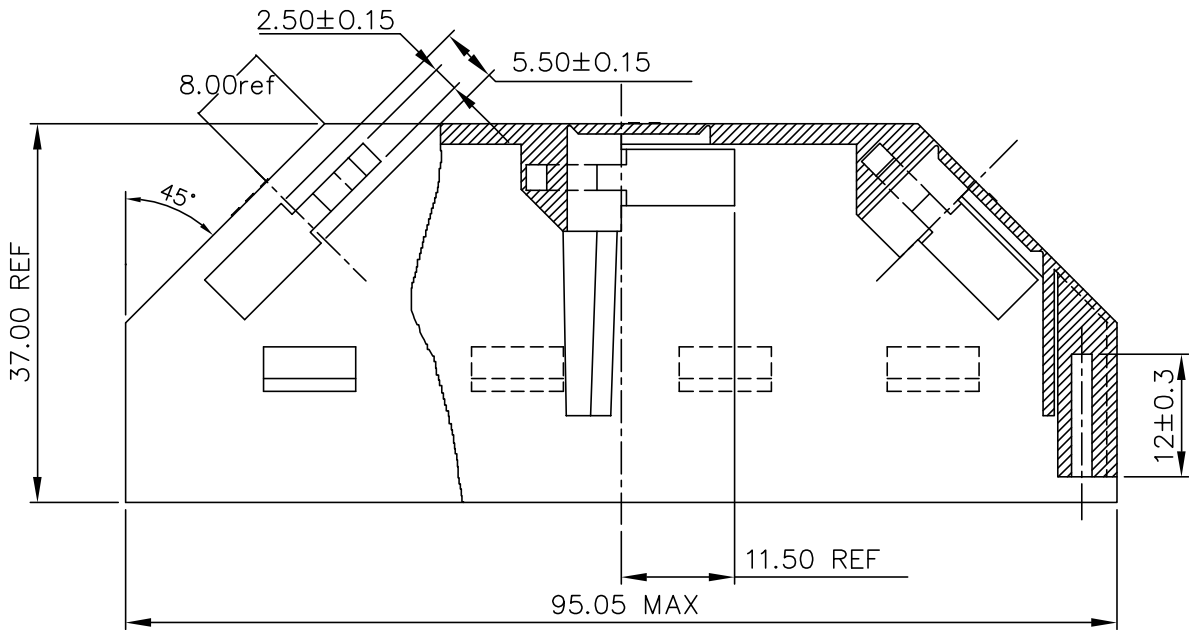
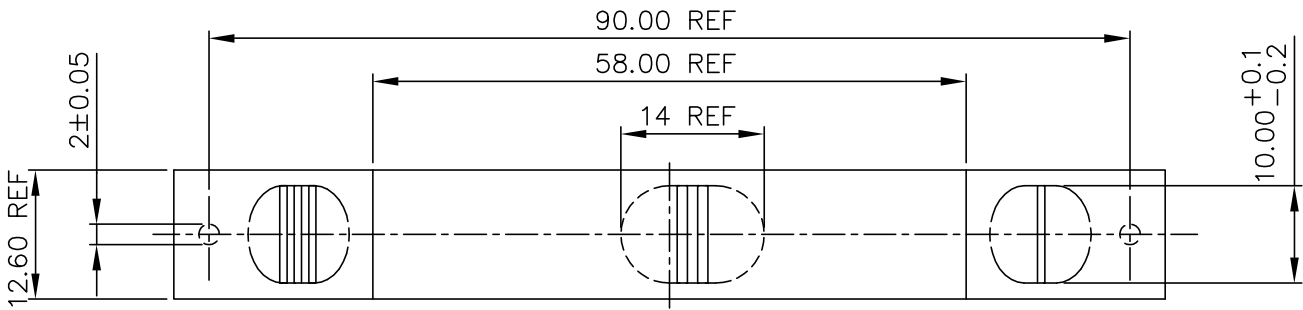





PRODUCT NUMBER	MATERIAL	COLOUR	FLAME RETARDANT
65155-001	PPO	BLACK RAL 9005	UL-94-V1
65155-002	PPO	GREY RAL 7035	UL-94-V1

NOTES:-

1. THIS PRODUCT MEETS EUROPEAN UNION DIRECTIVES AND OTHER COUNTRY REGULATIONS AS DESCRIBED IN GS-22-008.
2. LEADFREE OR RoHS DIRECTIVE LABELLING TO BE PROVIDED AS PER GS-14-920.
3. " LF " SUFFIX TO PRODUCT NUMBER FOR RoHS COMPATIBLE/ LEADFREE VERSION.
4. PARTS WITH AND WITHOUT "LF " SUFFIX ARE FORM-FIT AND FUNCTIONALLY IDENTICAL. " LF " SUFFIX PROVIDED FOR PART NUMBER STANDARDISATION OF PART THAT MEETS RoHS REQUIREMENTS.
5. THE THREE CABLE ENTRIES ARE IDENTICAL



mat'l. code SEE TABLE				surface ISO 1302 ✓		tolerance ISO 406 ISO 101		projection 101 		product family											
				tolerances unless otherwise specified						title											
ltr	ecn no	dr	date	angles		linear				COVER UNIVERSAL											
H	H00418	MVI	1990-09-07																		
J	H80467	LGI	1998-07-23							dwg no											
K	05-0248	MINI	2005-11-22													sheet 1 of 1					
L	06-0068	MINI	2006-06-01	dr	M Visschers	1990-09-03			size A2												
M	110-0111	KR	2010-05-12	engr	M Loman	1990-09-07															
				chr	Kesavan.R	2010-05-12															
				appd	Kesavan.R	2010-05-12			65155												
										type											
										CUSTOMER Drawing											
sheet index		revision sheet		M	1																
				6				7		8											