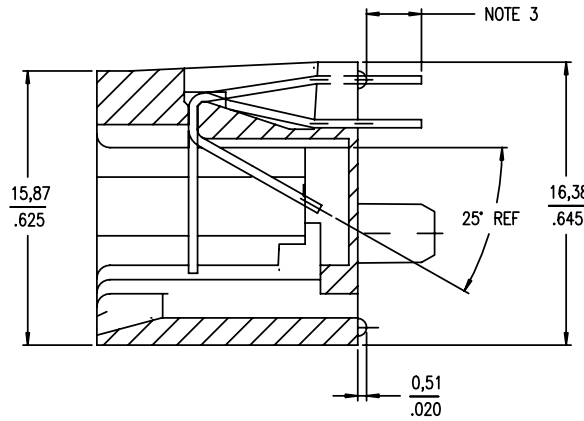
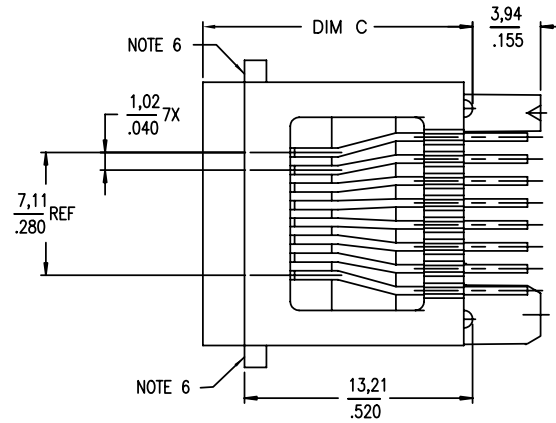
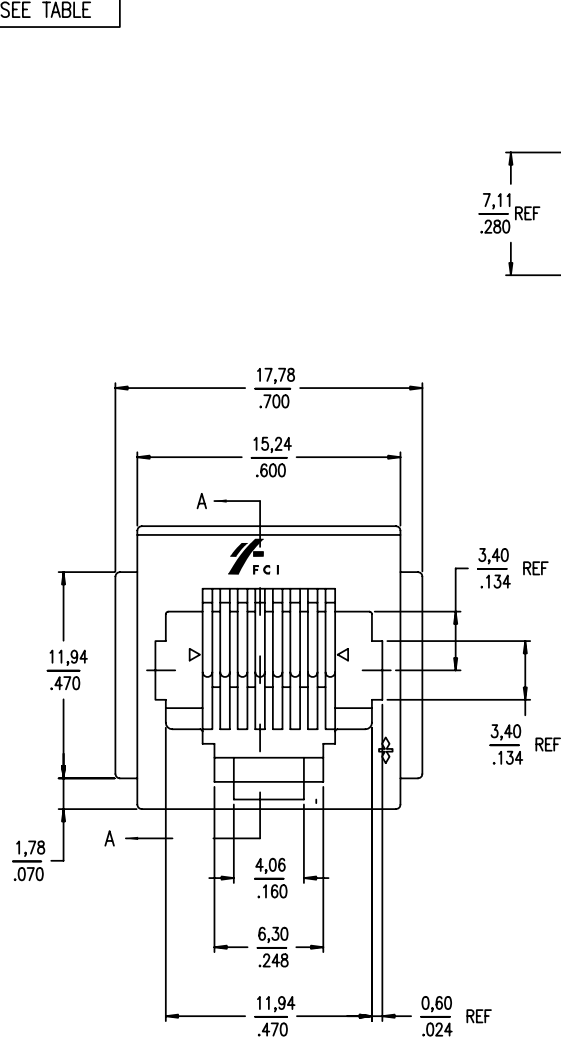
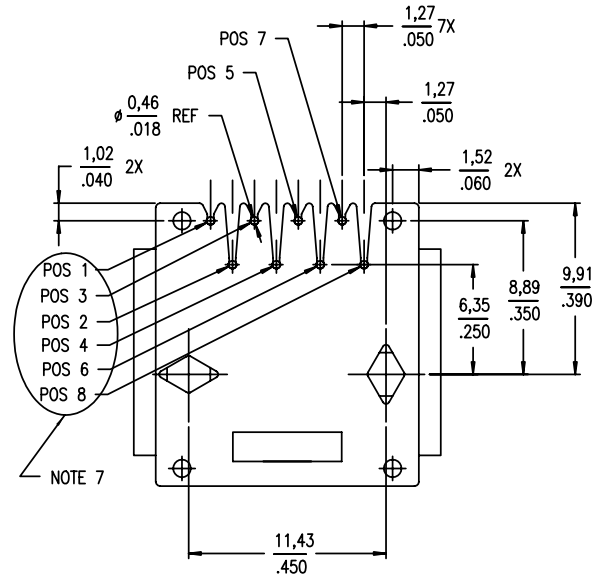




PRODUCT NO.
SEE TABLE



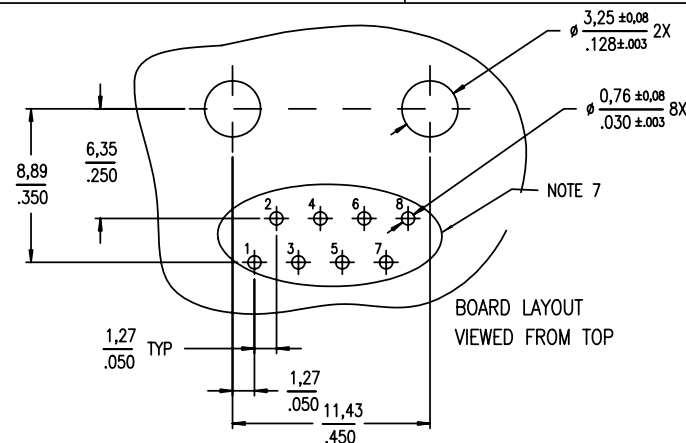
SECTION A-A



| mat'l. code | | | | tolerances unless otherwise specified | | CUSTOMER COPY | | FCI | |
|-------------|----------|-----|----------|---------------------------------------|------------------------|---------------|--|--------------------|--|
| ltr | ecn no | dr | date | | .XX ±.01/.X±.3 | projection | | www.fciconnect.com | |
| AE | N10-0009 | SH | 01/13/10 | linear | .xxx ±.005/.xx±.13 | | | | |
| W | T90350 | TC | 2/22/00 | | .xxxx ±.0020/.xxx±.051 | | | | |
| X | S00022 | BCL | 6/26/00 | angles | 0° ±2° | | | | |
| Y | N00059 | MC | 5/25/00 | dr | JANET 2/22/00 | MM/INCH | | | |
| AA | N00186 | MC | 2/19/00 | enr | M.CHENG 12/19/00 | | | | |
| AB | N05-0022 | MHT | 2/18/05 | chr | M.CHENG 12/19/00 | scale | | | |
| AC | M05-0067 | MHT | 4/8/05 | appd | M.CHENG 12/19/00 | 3.5/1 | | | |
| sheet index | revision | AE | AE | AE | | | | | |
| | sheet | 1 | 2 | 3 | | | | | |

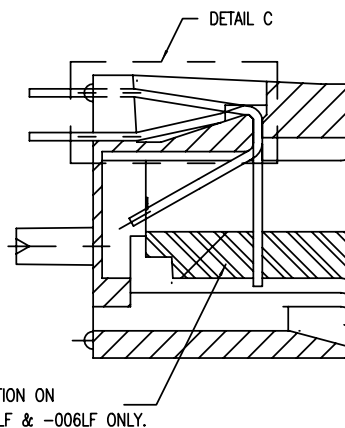
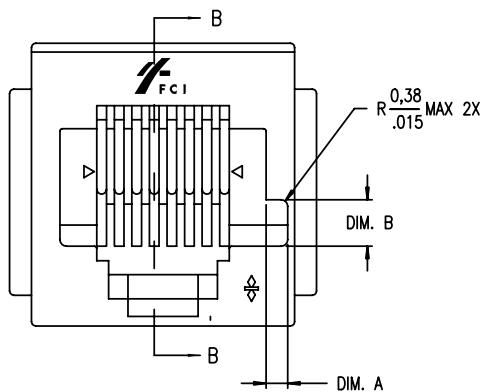
| CUSTOMER COPY | | | | FCI | |
|---------------|-------------------------------------|--|--|----------------|--------|
| title | 8 POS VERTICAL P.C.B. MOD JACK ASSY | | | product family | code |
| size | MODJACK | | | dwg no | sheet |
| | 69255 | | | | 1 of 3 |

| PRODUCT NO. ④ | DIM. A | DIM. B | DIM. C | STYLE | POSITIONS LOADED | CONTACT PLATING ⑪ | NOTES |
|---------------|-------------|-------------|------------|---------|------------------|-------------------|--------|
| 69255-X01YLF | - | - | 15.62/.615 | UNKEYED | ALL | GXT | - |
| -X02YLF | 1,25 / .050 | 2,69 / .106 | 15.62/.615 | KEYED | ALL | GXT | - |
| -X03YLF | - | - | 15.62/.615 | UNKEYED | 2,3,4,5,6,7 | GXT | - |
| -X04YLF | - | - | 15.62/.615 | UNKEYED | ALL | 0,76um / 30u" Au | - |
| -X05YLF | - | - | 15.62/.615 | UNKEYED | ALL | 1,27um / 50u" Au | - |
| -X06YLF | 1,25 / .050 | 2,69 / .106 | 15.62/.615 | KEYED | ALL | 1,27um / 50u" Au | - |
| -X07YLF | - | - | 15.62/.615 | UNKEYED | ALL | GXT | NOTE 1 |
| -X08YLF | - | - | 15.62/.615 | UNKEYED | 3,4,5,6 | GXT | - |
| -X09YLF | - | - | 15.62/.615 | UNKEYED | ALL | GXT | NOTE 6 |
| -X10YLF | - | - | 13.62/.536 | UNKEYED | ALL | GXT | NOTE 6 |



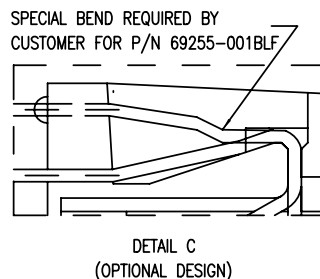
NOTES :

- ① SPECIAL PACKAGING.
- 2 GXT IS 0,76um / 30u" MIN GXT WITH Au FLASH OVER
1,27um / 50u" MIN Ni.
- ③ SOLDER TAIL LENGTH :
X = 0 [3,18 ±0,51 / .125 ±.020]
X = 1 [8,13 ±0,51 / .320 ±.020]
X = 2 [5,30 ±0,51 / .208 ±.020]
X = 3 [3,70 ±0,51 / .145 ±.020]
[FOR X = 1 TO 2 , WIRE TRUE POSITION IS NOT APPLICABLE.]
PACKAGING SPEC. IS GES-14-428
- ④ COLOR OF HOUSING :
Y = NIL (BLACK HOUSING)
Y = W (WHITE, RAL1013 HOUSING)
Y = G (GRAY, HOUSING)
- ⑤ SPECIAL REQUIREMENT :
SEE DETAIL C FOR P/N 69255-001B
FOR FEATURE DETAILS.
- ⑥ NO PANEL STOPS ON -X09Y AND -X10Y.
- ⑦ THIS PIN NUMBERING OPPOSITE TO
FCC, PART 68, SUB-PART F REQUIREMENTS
- ⑧ PART NUMBERS WITH LF IN THE END ARE LEAD FREE.
- 9 THIS PRODUCT MEETS EUROPEAN UNION DIRECTIVES AN OTHER COUNTRY
REGULATION AS DESCRIBED IN GS-22-008.
- 10 THE HOUSING TEMPERATURE WITHSTAND EXPOSURE TO 260°C PEAK
TEMPERATURE FOR 15 SECONDS IN A WAVE SOLDER APPLICATION WITH A
1.5 MM MINIMUM THICK CIRCUIT BOARD. SEE APPLICATION NOTES/PROCEDURES
IF THEY ARE AVAILABLE.
- ⑪ PLATING OPTION:
MAY BE EITHER GOLD OR GXT PLATED AT MANUFACTURER'S OPTION.



KEYED STYLE

SECTION B-B



DETAIL C
(OPTIONAL DESIGN)

| | | | | | | | | | |
|-------------|--|----------------|--|---------------------------------------|--|---------------|--|----------------------|--|
| mat'l. code | | | | tolerances unless otherwise specified | | CUSTOMER COPY | | FCI | |
| - | | | | .XX ±.01/.X±.3 | | projection | | title | |
| ltr | | | | .XXX ±.005/.XX±.13 | | MM/INCH | | 8 POS VERTICAL | |
| ecn no | | | | .XXXX ±.0020/.XXX±.051 | | scale | | P.C.B. MOD JACK ASSY | |
| dr | | | | 0" ±2" | | A | | product family | |
| date | | | | JANET 2/22/00 | | 69255 | | MODJACK | |
| linear | | | | M.CHENG 12/19/00 | | size | | code | |
| angles | | | | M.CHENG 12/19/00 | | dwg no | | - | |
| dr | | | | M.CHENG 12/19/00 | | sheet | | 2 of | |
| engr | | | | M.CHENG 12/19/00 | | 2 of | | | |
| chr | | | | M.CHENG 12/19/00 | | | | | |
| appd | | | | M.CHENG 12/19/00 | | | | | |
| sheet index | | revision sheet | | | | | | | |



All rights strictly reserved. Reproduction or issue to third parties in any form whatever is not permitted without written authority from the proprietor. Property of FCI. Copyright FCI.

Tous droits strictement reserves. Reproduction ou communication a des tiers interdite sous quelque forme que ce soit sans autorisation ecrite du proprietaire. Propriete de c FCI. Droits de reproduction FCI.

1 | 2

3

4

| PRODUCT NO. ④ | DIM. A | DIM. B | DIM. C | STYLE | POSITIONS LOADED | CONTACT PLATING ① | NOTES |
|---------------|------------|------------|------------|---------|------------------|-------------------|--------|
| 69255-X01YHLF | - | - | 15.62/.615 | UNKEYED | ALL | GXT | - |
| -X02YHLF | 1,25 /,050 | 2,69 /,106 | 15.62/.615 | KEYED | ALL | GXT | - |
| -X03YHLF | - | - | 15.62/.615 | UNKEYED | 2,3,4,5,6,7 | GXT | - |
| -X04YHLF | - | - | 15.62/.615 | UNKEYED | ALL | 0,76um /30u" Au | - |
| -X05YHLF | - | - | 15.62/.615 | UNKEYED | ALL | 1,27um /50u" Au | - |
| -X06YHLF | 1,25 /,050 | 2,69 /,106 | 15.62/.615 | KEYED | ALL | 1,27um /50u" Au | - |
| -X07YHLF | - | - | 15.62/.615 | UNKEYED | ALL | GXT | NOTE 1 |
| -X08YHLF | - | - | 15.62/.615 | UNKEYED | 3,4,5,6 | GXT | - |
| -X09YHLF | - | - | 15.62/.615 | UNKEYED | ALL | GXT | NOTE 6 |
| -X10YHLF | - | - | 13.62/.536 | UNKEYED | ALL | GXT | NOTE 6 |


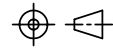
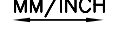
MEETS PIP PROCESS PRODUCT NO.

A

A

B

B

| | | | | | | | | | |
|-------------|----------|-------|------|---------------------------------------|------------------------|---------------|---|--|--|
| mat'l. code | | | | tolerances unless otherwise specified | | CUSTOMER COPY | |  www.fciconnect.com | |
| ltr | ecn no | dr | date | linear | .XX ±.01/.X±.3 | projection |  | title | |
| AE | | | | | .XXX ±.005/.XX±.13 | | | 8 POS VERTICAL | |
| | | | | | .XXXX ±.0020/.XXX±.051 | | | P.C.B. MOD JACK ASSY | |
| | | | | angles | 0° ±2° | MM/INCH |  | product family MODJACK | |
| | | | | dr | JANET 2/22/00 | | | code | |
| | | | | enr | M.CHENG 12/19/00 | | | - | |
| | | | | chr | M.CHENG 12/19/00 | scale | A | size dwg no | |
| | | | | appd | M.CHENG 12/19/00 | | | 69255 | |
| sheet index | revision | sheet | | | | 3.5/1 | | sheet 3 of | |

1 | 2

cage code

PDM: Rev:AE³

STATUS: Released 22026 Printed: Aug 01, 2010

ACAD