

PRODUCT NUMBER

73334-XXXLF

PLATING OPTION

1= GXT 0.76 μm
 3= GOLD 0.76 μm
 5= GOLD 1.27 μm

PACKAGE OPTION

1= TAPE ON REEL
 2= TUBE
 3= TAPE ON REEL
 IN PLASTIC BAG

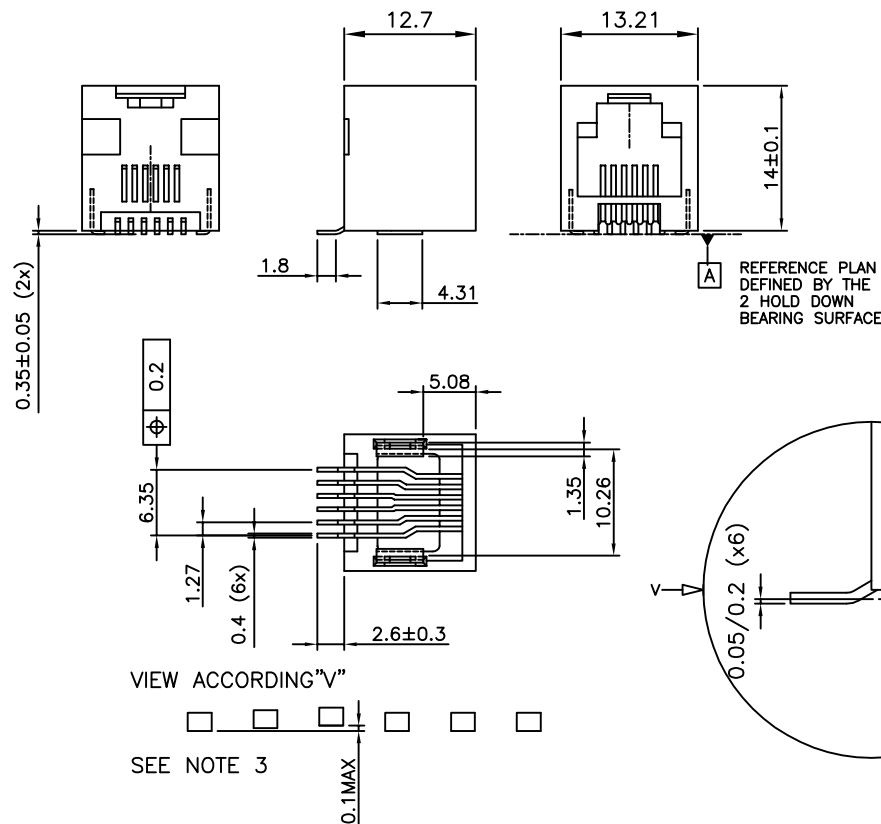
TERMINAL LOADING

1= FULLY LOADED
 2= POS 2,3,4,5
 3= POS 1,2,5,6



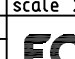
WHEN NEEDED, SUFFIX LETTER "LF"
 INDICATES THE PRODUCT IS RoHS
 COMPATIBLE, SEE NOTE 4.

NOTES:

- 1- MATERIAL: HOUSING: HIGH TEMP. NYLON, COLOUR BLACK.
 TERMINAL: PHOSPHOR BRONZE.
- 2 - PLATING: CONTACT AREA: SEE TABLE.
 SOLDER TAIL : 90/10 SnPb 2 μm MIN.
 WHEN SUFFIX "LF" IS REQUIRED, 2 μm MIN MATTE
 TIN OVER 1.27 MIN Ni IS SUPPLIED INSTEAD OF SnPb.
 NO RAW EDGES EXEPT SOLDER TAIL TIPS
- 3 - SOLDER TAILS COPLANARITY : 0.1 mm
- 4 - RoHS COMPATIBLE PRODUCT SPECIFICATIONS
- a - PLATING:
- "LF" MEANS THE PRODUCT IS LEAD-FREE,
 2 μm MINIMUM MATTE TIN OVER 1.27 μm
 MINIMUM NICKEL UNDERPLATE.
- b - MANUFACTURING PROCESS COMPATIBILITY
- THE HOUSING WILL WITHSTAND EXPOSURE TO
 245°C PEAK TEMPERATURE FOR 30 SECONDS
 MAX IN A CONVECTION, INFRA-RED OR VAPOR
 PHASE OR REFLOW OVEN.
- c - LABELING:
- MEETS PACKAGING SPECS AS PER GS-14-920
- d - LEGAL STATEMENT: SEE GS-22-008
- 5 - PACKAGING FOR OPTION 3 : EACH REEL IS WRAPPED INTO A PLASTIC BAG
 TO PROTECT FROM MOISTURE DURING STACKING TIME.

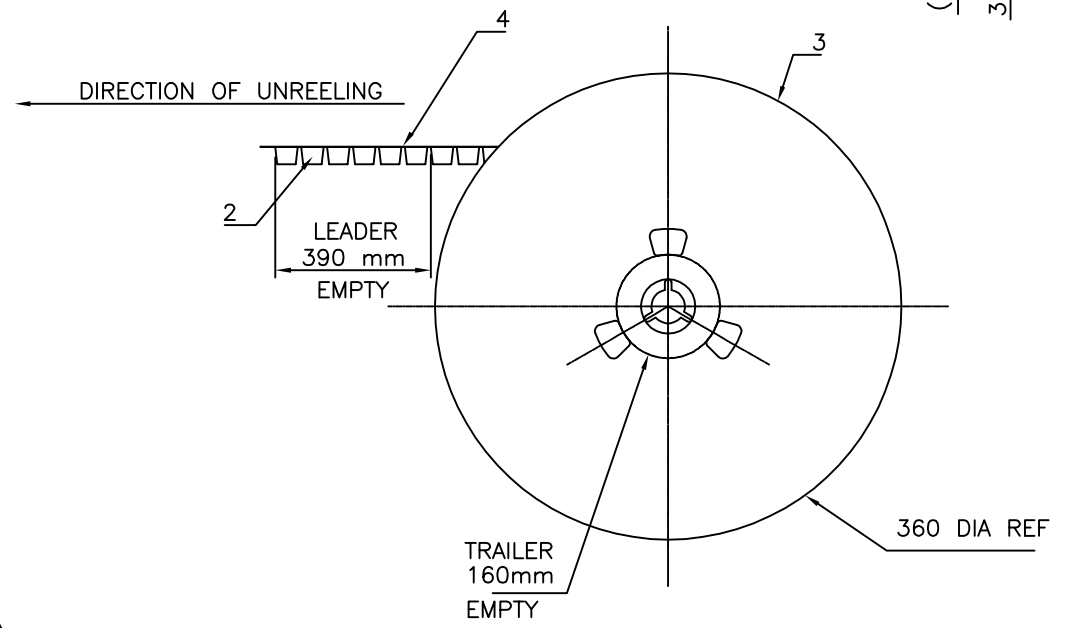
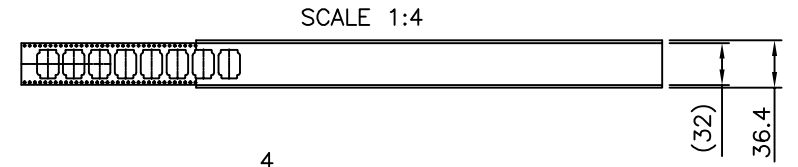
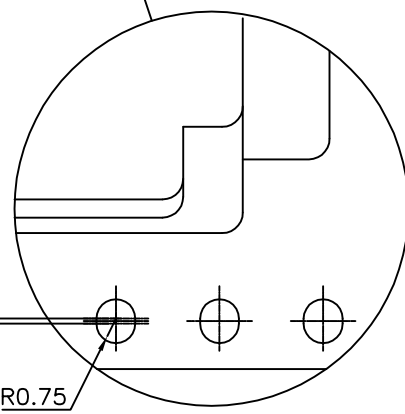
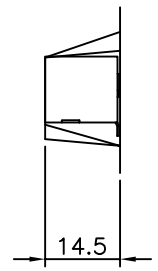
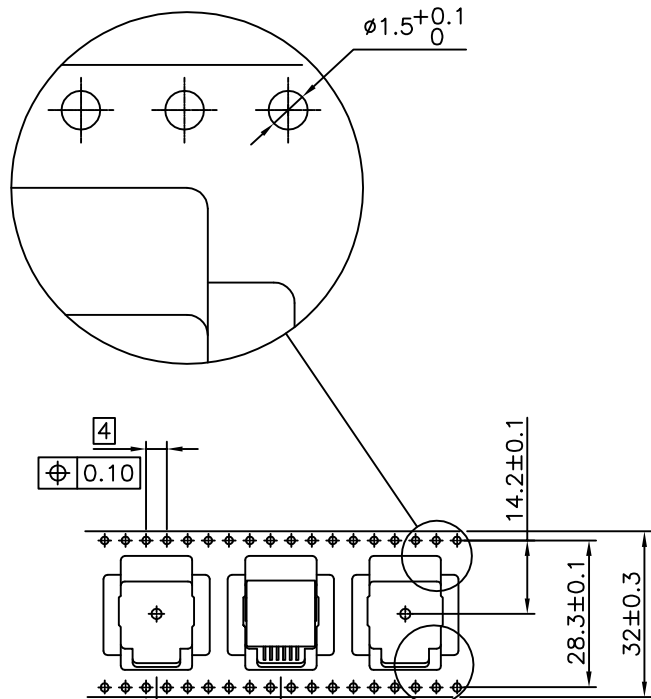


CUSTOMER COPY FOR REFERENCE ONLY

| | | | | | | | | | | | | | |
|-------------|----------|-----|----------|---------------------------------------|-----------|-------------------------------|----------|---|---|--------------------------------------|--|------------------|------|
| mat'l. code | | | | surface ISO 1302 ✓ | | tolerance ISO 406 ISO 1101 | | projection  | | product family MODULAR JACK | | | |
| lfr | ecn no | dr | date | tolerances unless otherwise specified | | | |  | | title SMT RA JACK 6 POS INSIDE | | | |
| H | F10-0239 | APA | 10.10.25 | angles | linear | ±0.13 | | | | | | | |
| C | F80620 | DLE | 98.11.26 | ±2' | | scale 2:1 | | | | | | | |
| D | F03020 | DLE | 03.01.27 | dr | D LEGRAND | | 04.10.19 | |  | dwg no | | sheet 1 of 3 | size |
| E | F04-0363 | DLE | 04.10.19 | engr | P NIZZI | | 04.10.19 | | | 73334 | | A3 | |
| F | F05-0247 | DLE | 05.09.12 | chr | D LEGRAND | | 04.10.19 | | | type | | CUSTOMER Drawing | |
| G | F06-0240 | DLE | 06.07.18 | appd | P NZ | | 04.10.19 | | | | | | |
| sheet | revision | G | D | B | | | | | | | | | |
| index | sheet | 1 | 2 | 3 | | | | | | | | | |

PRODUCT NUMBER
SEE SHEET 1

| LTR | PART NAME | QTY |
|-----|------------|-----|
| 1 | PRODUCT | 230 |
| 2 | TAPE | 1 |
| 3 | REEL | 1 |
| 4 | COVER TAPE | 1 |



1- IN ACCORDANCE WITH EIA-481 AND IEC 296-3

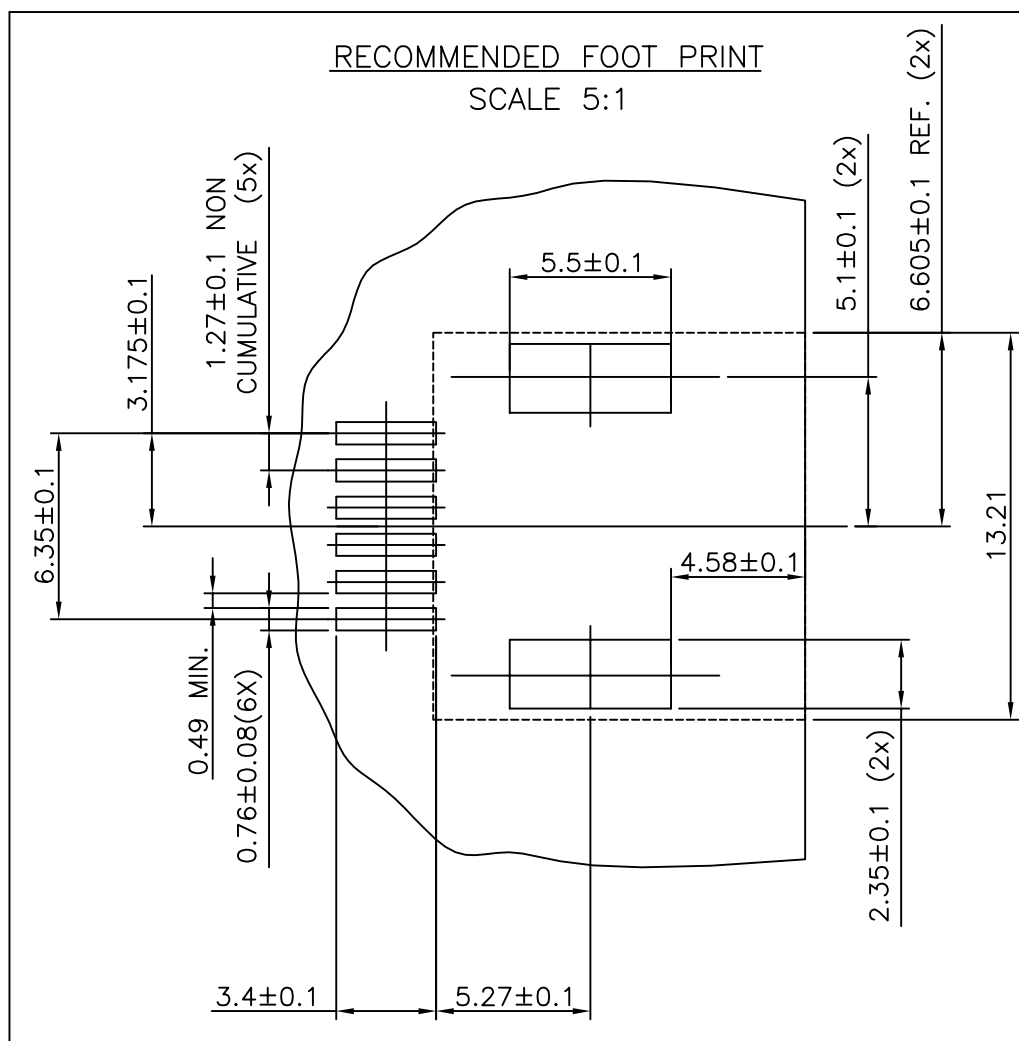
CUSTOMER COPY FOR REFERENCE ONLY

| | | | | | | | |
|-------------|----------------|-----|----------|---------------------------------------|-------------------------------|------------------|----------------------------|
| mat'l. code | | | | surface ISO 1302 | tolerance ISO 406 ISO 1101 | projection mm | product family MOD-JACK |
| ltr | ecn no | dr | date | tolerances unless otherwise specified | | | title |
| C | F80620 | DLE | 98.11.26 | angles | linear | mm | SMT RA JACK |
| D | F06-0240 | DLE | 06.07.18 | | | scale 1:1 | 6 POS. INSIDE |
| | | | | dr | D LEGRAND | 06.07.18 | dwg no |
| | | | | enr | P NIZZI | 06.07.18 | sheet 2 of 3 |
| | | | | chr | D LE | 06.07.18 | size |
| | | | | app | P NZ | 06.07.18 | A3 |
| sheet index | revision sheet | | | | | | type |
| | | | | | | | CUSTOMER Drawing |

PDM: Rev:H

STATUS Released

Printed: Oct 30, 2010



CUSTOMER COPY FOR REFERENCE ONLY

| | | | | | | | | | | |
|-------------|----------|-----|----------|---------------------------------------|-------------------------------|----------------|--------------------------------------|--|--|--|
| mat'l. code | | | | surface ISO 1302 ✓ | tolerance ISO 406 ISO 1101 | projection | product family MODULAR JACK | | | |
| ltr | ecn no | dr | date | tolerances unless otherwise specified | | | title SMT RA JACK 6 POS INSIDE | | | |
| A | F04-0363 | DLE | 04.10.19 | angles | linear | | | | | |
| B | F06-0240 | DLE | 06.07.18 | ±2° | | scale 2:1 | dwg no 73334 | | | |
| | | | | dr | D LEGRAND | 04.10.19 | | | | |
| | | | | enr | P NIZZI | 04.10.19 | sheet 3 of - size A4 | | | |
| | | | | chr | D LEGRAND | 04.10.19 | | | | |
| | | | | app | P NZ | 04.10.19 | type CUSTOMER Drawing | | | |
| sheet index | revision | | | | | | | | | |
| | sheet | | | | | | | | | |