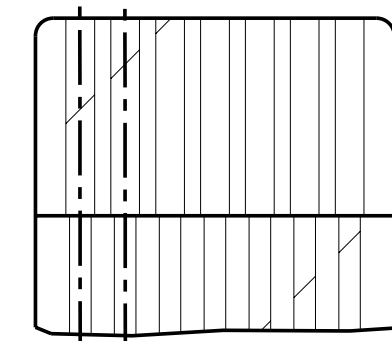


7361Z0001SxxLF

Lead Free Version (Optional)

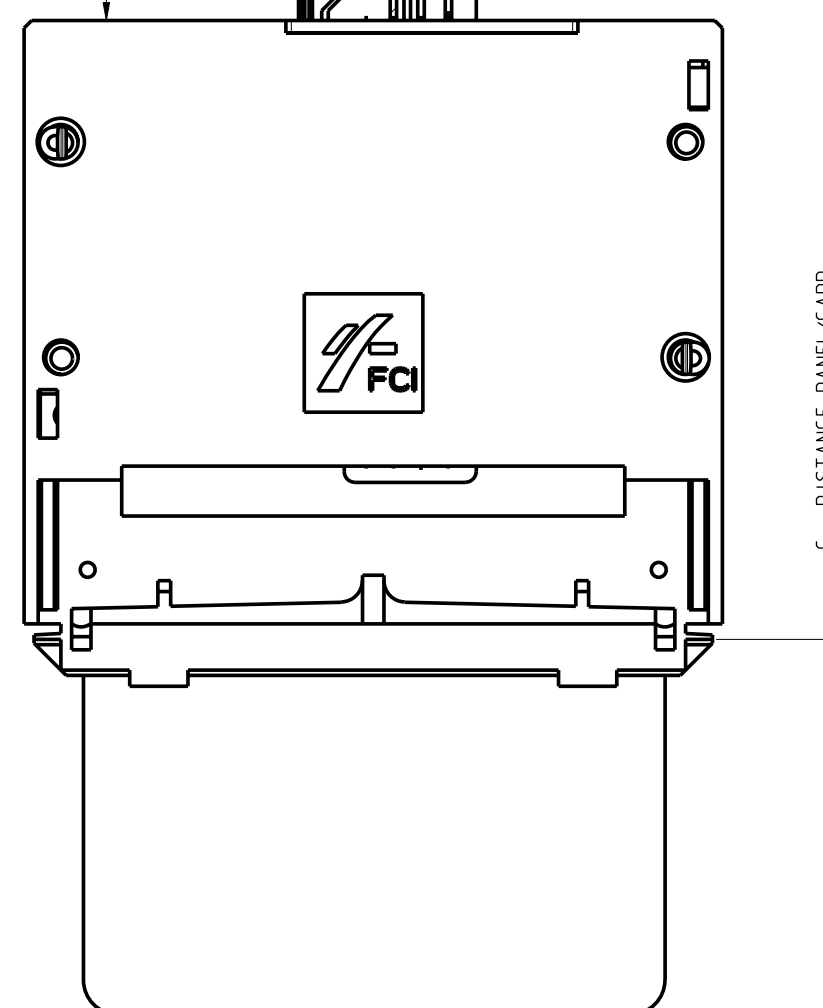
Customer Specificity

B : TERMINAL PITCH



DETAIL A
SCALE 5/1

A : FLEX LENGTH



C : DISTANCE PANEL/CARD

SCALE 19/15

SCALE 3/2

GENERAL

This Smart Card Reader uses a sliding contact technology.
It has been designed for easy mounting on metal panel.

ELECTRICAL PROPERTIES

Insulation resistance : 5000 M
Dielectric withstanding : 750 VAC
Current carrying capacity : 10 μ A min. 1A max.
Contact resistance : 100 m
Card sensor type : Blade switch normally closed

MECHANICAL PROPERTIES

EMV compatible and according to ISO 7816-2
Contact normal force : between 0.2 N to 0.6 N per contact
Insertion force : 10 N max.
Withdrawal force : 1 N min.
Max. number of mating operations : 10000 card insertions.

CAPACITOR :

100nF, chip size 0805 in (2012 mm), Y5V, 25V or 50V

READER MATERIAL

Housing : Thermoplastique, 30% GF, Colour black, Rated UL94V0
Contacts and switch : Phosphor bronze
Plating : precoat Nickel 2.5 μ m min. all over
Gold 0.2 μ m min. on contacts areas
SnPB 3 μ m min. on termination contacts for Leaded version
Matte Sn 3 μ on termiantion end for Leadfree version

ENVIRONMENT

Operating temperature : -20 $^{\circ}$ C / +70 $^{\circ}$ C
Storage temperature : -40 $^{\circ}$ C / +85 $^{\circ}$ C
Panel thickness : 0.8+-0.1 mm


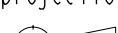


PACKAGING

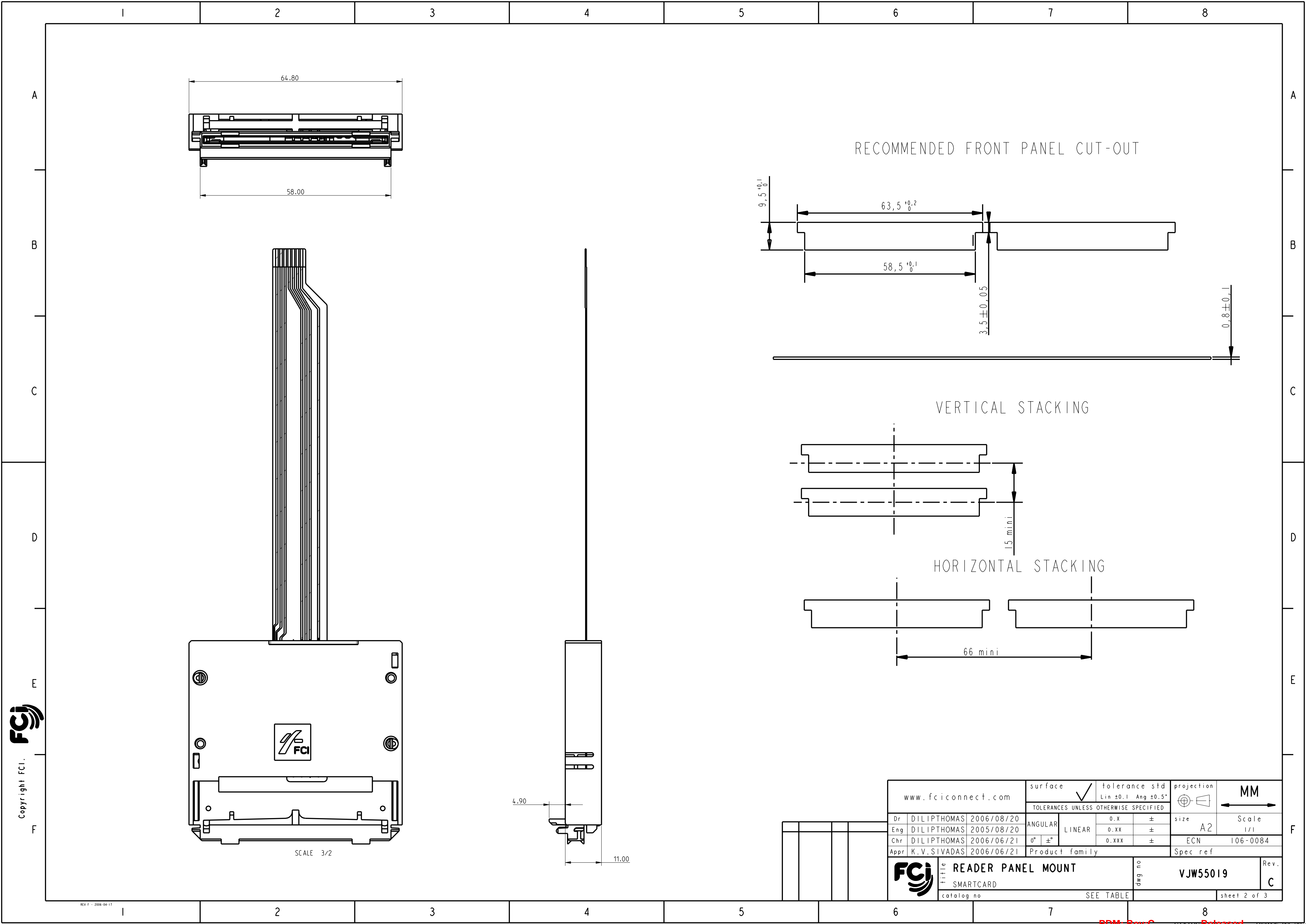
Trays
Packaging specification : VGN11646

LEAD FREE VERSION:

"This product meets European Union Directives and other country regulations as described in GS-22-008"

The housing will withstand exposure to 260 $^{\circ}$ C peak temperature for 10seconds in a wave solder application with a 1.6mm minimum thick circuit board.
Use protective adhesive tape (Kapton or Teflon) or protective metallic devices on the areas which are directly exposed to wave soldering as it is used in classical leaded wave soldering

www.fciconnect.com				surface 		tolerance std Lin ± 0.1 Ang $\pm 0.5^\circ$				MM 			
				TOLERANCES UNLESS OTHERWISE SPECIFIED									
Dr DILIPHTHOMAS 2006/08/20				ANGULAR		0.X		±		size		Scale	
Eng DILIPHTHOMAS 2005/08/20						0.XX		±		A2		1/1	
Chr DILIPHTHOMAS 2006/06/21				0° ±°		0.XXX		±		ECN		106-0084	
Appr K.V.SIVADAS 2006/06/21				Product family						Spec ref			
				title READER PANEL MOUNT						dwg no VJW55019		Rev C	
				SMARTCARD									
catalog no				SEE TABLE						sheet 1 of 3			



Copyright FCI.

REV F - 2006-04-17

www.fciconnect.com			surface	✓	tolerance std	Lin ± 0.1 Ang $\pm 0.5^\circ$	projection	MM
			TOLERANCES UNLESS OTHERWISE SPECIFIED					
Dr	DILIPTHOMAS	2006/08/20	ANGULAR		0.X	±	size	Scale
Eng	DILIPTHOMAS	2005/08/20		LINEAR	0.XX	±	A2	1/1
Chr	DILIPTHOMAS	2006/06/21	0° ±°		0.XXX	±	ECN	106-0084
Appr	K.V.SIVADAS	2006/06/21	Product family				Spec ref	
FCI			title			dwg no		
			READER PANEL MOUNT			VJW55019		
			SMARTCARD			Rev.		
			catalog no			SEE TABLE		
						sheet 2 of 3		

1

2

3

4

5

6

7

8

7x61Z0001SxxLF

LIST OF PART NUMBERS

X=3, STANDARD TRAY

X=5, ANTISTATIC TRAY

Lead Free Version (Optional)

Customer Specificity

PRODUCT NUMBER	A: FLEX LENGTH (mm)	B:TERMINAL PITCH (mm)	NUMBER OF TRACKS	FLEX FORM	CAPACITOR NUMBER	CONTACT NUMBER	C: DISTANCE PANEL/CARD (mm)	PACKING TYPE
7361Z0001S13	96	1	10	STRAIGHT	2	8 : ISO	35	A
7361Z0001S14	101	1	10	STRAIGHT	2	16ISO+AFNOR	35	A
7361Z0001S15	96	1	10	STRAIGHT	2	8 : ISO	25	A
7361Z0001S22	156	1.25	10	STRAIGHT	1	16ISO+AFNOR	35	A
7361Z0001S29	58	1.25	10	STRAIGHT	NONE	8 : ISO	35	A
7561Z0001S29	58	1.25	10	STRAIGHT	NONE	8 : ISO	35	A
7361Z0001S31	58	1.25	10	STRAIGHT	NONE	8 : ISO	25	A
7361Z0001S33	58	1.25	10	STRAIGHT	1	8 : ISO	35	A
7361Z0001S35	120	1.25	10	STRAIGHT	1	8 : ISO	35	A
7361Z0001S36	120	1.25	10	STRAIGHT	1	8 : ISO	15	B
7361Z0001S37	58	1.25	10	STRAIGHT	NONE	8 : ISO	15	B
7361Z0001S38	85	1.25	10	STRAIGHT	1	16ISO+AFNOR	35	A
7361Z0001S39	58	1.25	10	STRAIGHT	NONE	8 : ISO	35	A
7361Z0001S40	118	1.25	7	STRAIGHT	1	8 : ISO	35	C
7361Z0001S41	118	1.25	7	STRAIGHT	1	8 : ISO	15	B
7361Z0001S42	60	1.25	7	STRAIGHT	NONE	8 : ISO	25	A
7361Z0001S43	58	1.25	10	STRAIGHT	1	8 : ISO	25	A

PACKING TYPE:

A : 28 CONNECTORS / TRAY
420 CONNECTORS / SHIPPING BOX

B : 25 CONNECTORS / BLOCK
500 CONNECTORS / SHIPPING BOX

C : 12 CONNECTORS / TRAY
120 CONNECTORS / SHIPPING BOX

FCI

Copyright FCI.

Dr

Eng

Chr

Appr

DILIPTHOMAS

DILIPTHOMAS

DILIPTHOMAS

K.V.SIVADAS

2006/08/20

2005/08/20

2006/06/21

2006/06/21

surface

tolerance std

projection

MM

TOLERANCES UNLESS OTHERWISE SPECIFIED

ANGULAR

LINEAR

0.X

0.XX

0.XXX

size

A2

Scale

1/1

ECN

106-0084

Spec ref

Product family

SEE TABLE

sheet 3 of 3

FCI

READER PANEL MOUNT

SMARTCARD

catalog no

dwg no

VJW55019

Rev.

C

1

2

3

4

5

6

7

8

REV F - 2006-04-17

PDM-Rev.C

STATUS:Released

Printed: Jan 29, 2010