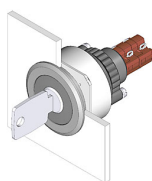


EAO – Your Expert Partner for Human Machine Interfaces

14-136.025K2 - Keylock switch actuator 2 positions

14-136.025K2 - Keylock switch actuator 2 positions



Attention: The preview is based on a sample product. This can differ from your current configuration.

Mounting

| | |
|------------------|-----------|
| Design | flush |
| Mounting cut-out | Ø 30,5 mm |

Front

| | |
|-----------------|---------|
| Front dimension | Ø 35 mm |
| Front shape | round |

Other Attributes

| | |
|--------|----------|
| Weight | 0,031 kg |
|--------|----------|

Operating-/Indication part

| | |
|-----------------|-----------|
| Switching angle | 90° right |
|-----------------|-----------|

IP-Rating

| | |
|------------------|------|
| Front protection | IP65 |
|------------------|------|

Connection Method

| | |
|----------|--------|
| Terminal | Solder |
|----------|--------|

Actuator

| | |
|------------------|-----------------------|
| Switching action | Rest(a) - Maintain(a) |
|------------------|-----------------------|

Switching element

| | |
|-------------------|-------------------------------|
| Rotary positions | 2 |
| Switching system | Snap-action switching element |
| Contacts | 2 NC + 2 NO |
| Switching current | 5 A |
| Contact material | |
| Switching voltage | 250 V AC |

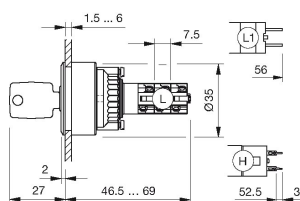
Function

| | |
|----------------|--|
| Keylock switch | |
|----------------|--|

EAO – Your Expert Partner for Human Machine Interfaces

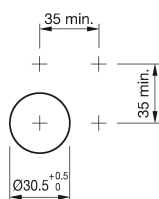
14-136.025K2 - Keylock switch actuator 2 positions

Dimensions

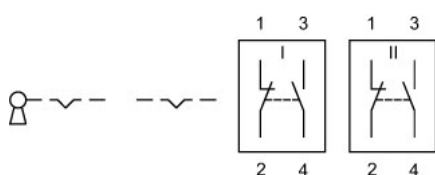


L = Solder terminal

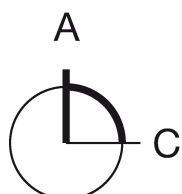
Mounting cut-outs



Wiring diagram



Switching positions



Additional information

Lock numbers 1001, lock type KABA

Two keys are supplied with each keylock switch.

Optional lock numbers on request

Legend

Contacts: NC = Normally closed, NO = Normally open

Switching action: A = Rest, C = Maintained