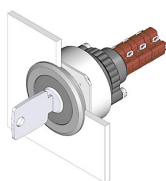


EAO – Your Expert Partner for Human Machine Interfaces

14-137.025K2 - Keylock switch actuator 2 positions

14-137.025K2 - Keylock switch actuator 2 positions



Attention: The preview is based on a sample product. This can differ from your current configuration.

Mounting

Design	flush
Mounting cut-out	Ø 30,5 mm

Front

Front dimension	Ø 35 mm
Front shape	round

Other Attributes

Weight	0,033 kg
--------	----------

Operating-/Indication part

Switching angle	90° right
-----------------	-----------

IP-Rating

Front protection	IP65
------------------	------

Connection Method

Terminal	Solder
----------	--------

Actuator

Switching action	Rest(a) - Maintain(a)
------------------	-----------------------

Switching element

Rotary positions	2
Switching system	Snap-action switching element
Contacts	3 NC + 3 NO
Switching current	5 A
Contact material	
Switching voltage	250 V AC

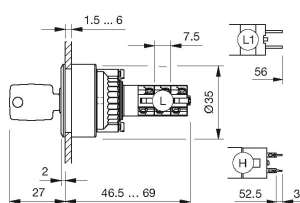
Function

Keylock switch

EAO – Your Expert Partner for Human Machine Interfaces

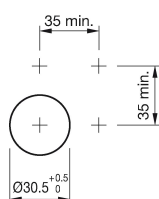
14-137.025K2 - Keylock switch actuator 2 positions

Dimensions

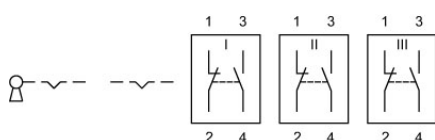


L = Solder terminal

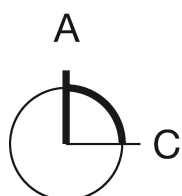
Mounting cut-outs



Wiring diagram



Switching positions



Additional information

Lock numbers 1001, lock type KABA

Two keys are supplied with each keylock switch.

Optional lock numbers on request

Legend

Contacts: NC = Normally closed, NO = Normally open

Switching action: A = Rest, C = Maintained