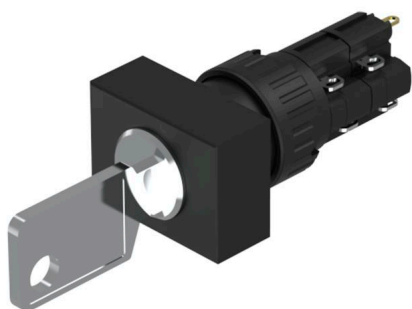


EAO – Your Expert Partner for Human Machine Interfaces

51-196.025D2F - Keylock switch 2 positions rectangular - Actuator

51-196.025D2F - Keylock switch 2 positions rectangular - Actuator



Attention: The preview is based on a sample product. This can differ from your current configuration.

Attribute

Design	flush
Front dimension	30 mm x 24 mm
Front form	rectangular
IP front protection	IP65
Switching current	5 A
Switching system	Snap-action switching element
Switching voltage	250 V
Terminal	Soldering terminal
Weight	0.026 kg
Switching rating	250 V @ 5 A
Contacts	2 NC / 2 NO
Contact material	Gold
Mounting cut-out	21 mm x 27 mm
Rotary positions	2
Switching action	Rest (a) - Maintained (a)
Switching angle	90° right

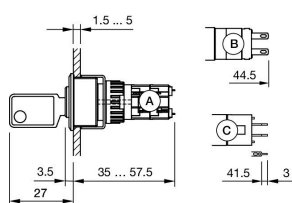
Function

Keylock switch

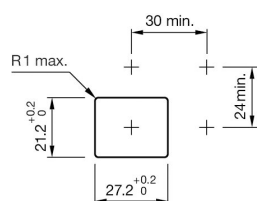
EAO – Your Expert Partner for Human Machine Interfaces

51-196.025D2F - Keylock switch 2 positions rectangular - Actuator

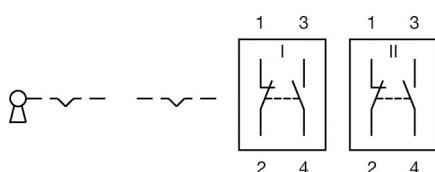
Dimensions



Mounting cut-outs



Wiring diagrams



Additional information

Standard lock: DOM 311

Contacts: NC = Normally closed, NO = Normally open

a = Key remove

Standard lock: DOM 311

Contacts: NC = Normally closed, NO = Normally open

a = Key remove