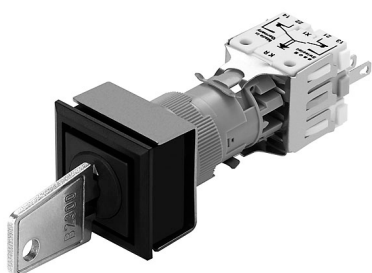


EAO – Your Expert Partner for Human Machine Interfaces

923-.401-0P - Keylock switch actuator 2 positions square

923-.401-0P - Keylock switch actuator 2 positions square



Attention: The preview is based on a sample product. This can differ from your current configuration.

Mounting

Mounting cut-out Design 21 mm x 21 mm
flush

Front

Front dimension 24 mm x 24 mm
Front shape square

Other Attributes

Weight 0,026 kg

Operating-/Indication part

Switching angle 90° right

IP-Rating

Front protection IP40

Connection Method

Terminal PCB

Actuator

Switching action Rest(a) - Maintain

Switching element

Rotary positions 2
Switching system Snap-action switching element
Contacts 3 NC + 3 NO
Switching current 5 A
Contact material
Switching voltage 250 V AC

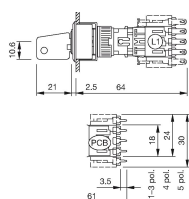
Function

Keylock switch

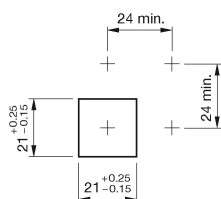
EAO – Your Expert Partner for Human Machine Interfaces

923-.401-0P - Keylock switch actuator 2 positions square

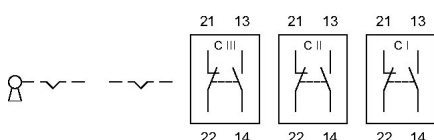
Dimensions



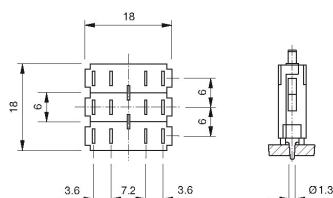
Mounting cut-outs



Wiring diagram



Component layout



Additional information

Standard lock B2 300

Further lock numbers see «Technical data»

Legend

Contacts: NC = Normally closed, NO = Normally open

Switching action: A = Rest, C = Maintained

EAO – Your Expert Partner for **Human Machine Interfaces**

923-.401-0P - Keylock switch actuator 2 positions square

Switching positions

