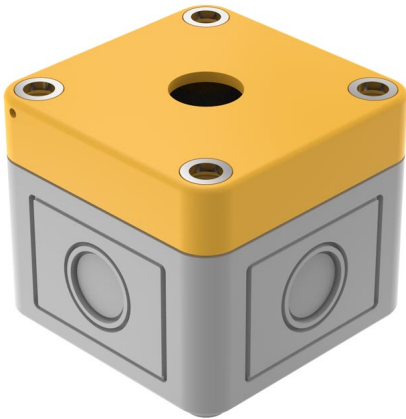


EAO – Your Expert Partner for Human Machine Interfaces

61-9480.6 - Enclosure

61-9480.6 - Enclosure



Attention: The preview is based on a sample product. This can differ from your current configuration.

Other Attributes

| | |
|-----------|------------------------|
| Dimension | 65 x 65 x 57 mm |
| Weight | 0,099 kg |
| Colour | grey, similar RAL 7035 |
| Material | |

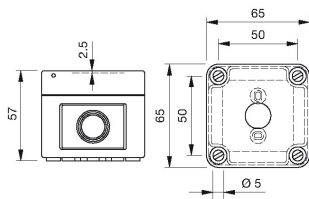
IP-Rating

| | |
|-------------------|------|
| Protection degree | IP66 |
|-------------------|------|

EAO – Your Expert Partner for Human Machine Interfaces

61-9480.6 - Enclosure

Dimensions



Additional information

Cover lead-sealable

Openings for cable gland M16 or M20

With mounting cut-out $\varnothing 16$ mm, without anti- twist device