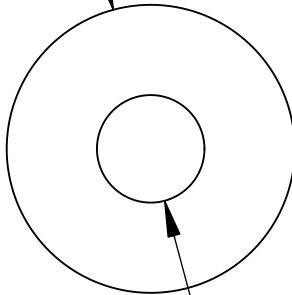


UNCONTROLLED DOCUMENT

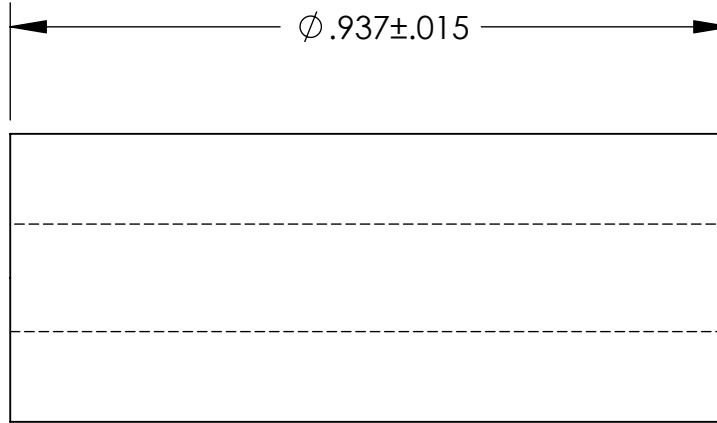
NOTES:
SCREW - #6

$\phi .375 \pm .015$



$\phi .140$

$\phi .937 \pm .015$



TOLERANCES UNLESS NOTED

$\pm .005$ ON DIMENSIONS THRU .625
 $\pm .008$ ON DIMENSIONS .626 THRU 1.000
 $\pm .010$ ON DIMENSIONS 1.001 THRU 1.500
 $\pm .015$ ON DIMENSIONS LARGER THAN 1.500
 $\pm .015$ ON FRACTIONAL DIMENSIONS

WE RESERVE THE RIGHT
TO DISCONTINUE ITEMS,
CHANGE SPECIFICATIONS
OR DESIGN AT ANY TIME
WITHOUT NOTICE AND
WITHOUT INCURRING
ANY OBLIGATIONS

PROPERTY OF
MICRO PLASTICS INC.

CATALOG DRAWING
STANDARD SPACER
MICRO P/N 13SP197
DWG. # 13SP197
FILE SERVER\ENG\WEB

MATERIAL: 6/6 NYLON

DATE

SCALE
4:1

TA