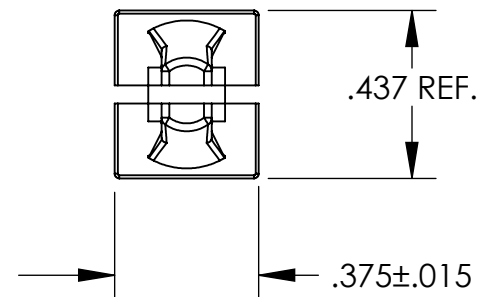
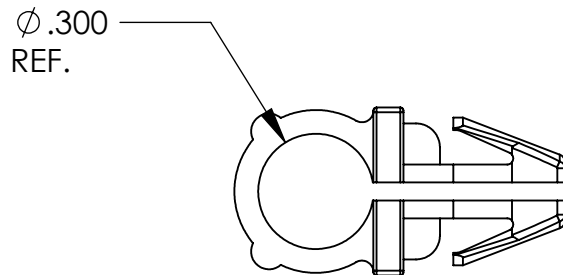


NOTES:

1. HOLE SIZE .250
2. PANEL THICKNESS RANGE .030 / .125
3. CUSTOMER PROVIDED PART(S)/DRAWINGS DO NOT MATCH OUR STANDARD PRODUCT LINE. THIS DRAWING WILL BE USED FOR APPROVAL AND IS DRAWN TO MATCH OUR PRODUCT LINE.



REVIEWED BY _____
DATE _____

ENGINEERING APPROVED DRAWING
RELEASE LEVEL DATE _____

TOLERANCES UNLESS NOTED

±.005 ON DIMENSIONS THRU .625
±.008 ON DIMENSIONS .626 THRU 1.000
±.010 ON DIMENSIONS 1.001 THRU 1.500
±.015 ON DIMENSIONS LARGER THAN 1.500
±.015 ON FRACTIONAL DIMENSIONS

REV.	WAS	BY	DATE
A	23SWRC250250	TA	01/23/13

PROPERTY OF
MICRO PLASTICS INC.

W & E SALES
1/4" SPLIT WIRE ROUTING CLIP
JOB 13156
CUSTOMER P/N 2546
MICRO P/N 23SWRC250250XM01B
DWG NO 13156P

MATERIAL: NYLON 6/6; MOLD BLACK

DATE 01/18/13	SCALE 2:1	TA
------------------	--------------	-----------