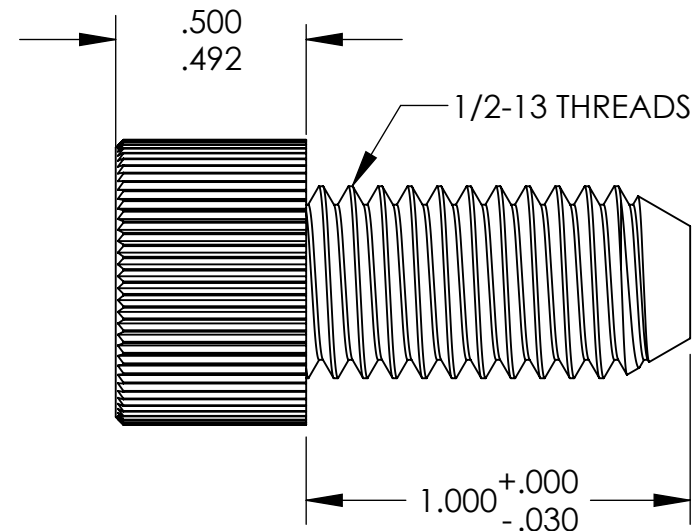
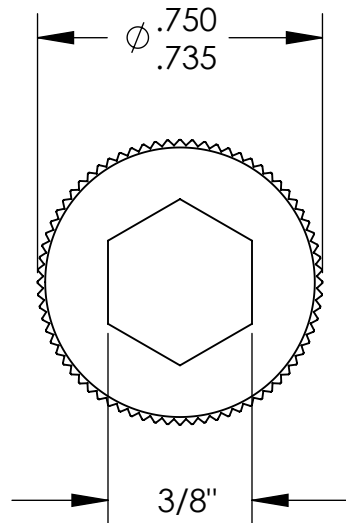


UNCONTROLLED DOCUMENT



NOTES:  
.245 MINIMUM KEY ENGAGEMENT

TOLERANCES UNLESS NOTED

±.005 ON DIMENSIONS THRU .625  
±.008 ON DIMENSIONS .626 THRU 1.000  
±.010 ON DIMENSIONS 1.001 THRU 1.500  
±.015 ON DIMENSIONS LARGER THAN 1.500  
±.015 ON FRACTIONAL DIMENSIONS

WE RESERVE THE RIGHT  
TO DISCONTINUE ITEMS,  
CHANGE SPECIFICATIONS  
OR DESIGN AT ANY TIME  
WITHOUT NOTICE AND  
WITHOUT INCURRING  
ANY OBLIGATIONS

PROPERTY OF  
MICRO PLASTICS INC.

CATALOG DRAWING  
HEX SOCKET CAP MACHINE SCREW  
MICRO P/N 3450013100  
DWG. # 3450013100  
FILE SERVER\ENG\WEB

MATERIAL: 6/6 NYLON

DATE

SCALE  
2:1

JDD