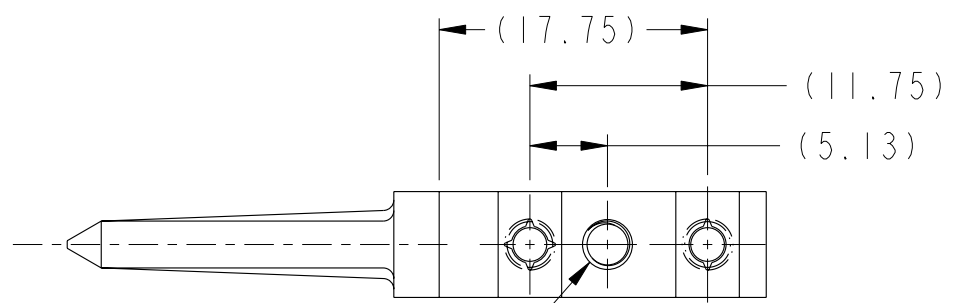
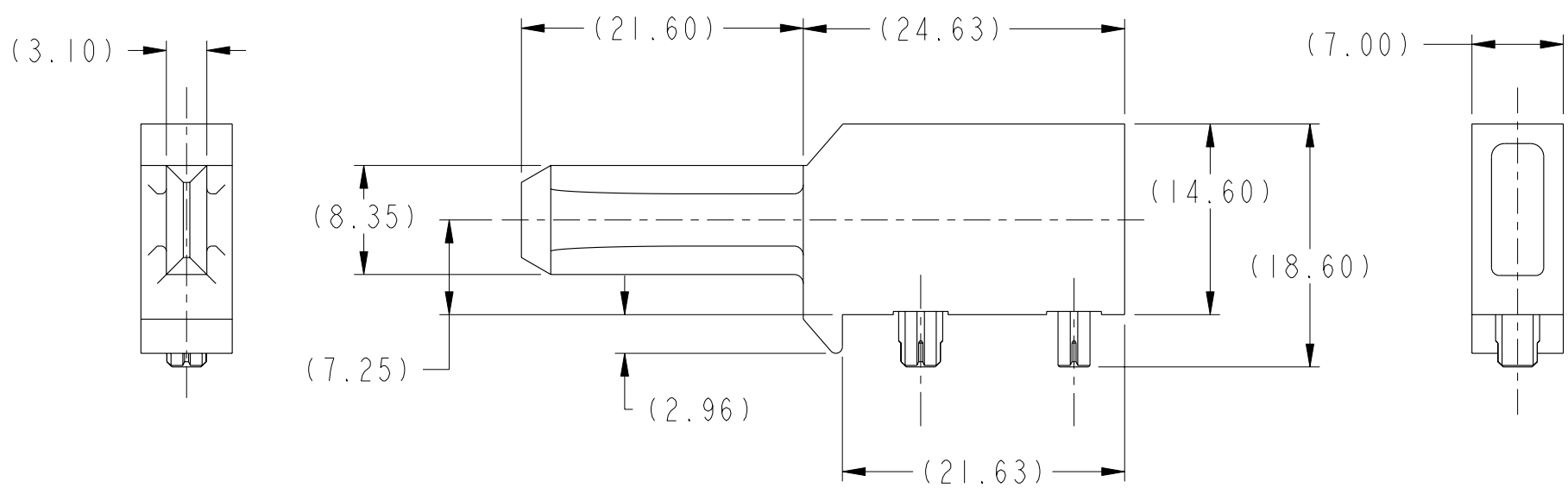


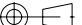
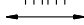



Copyright FCI.



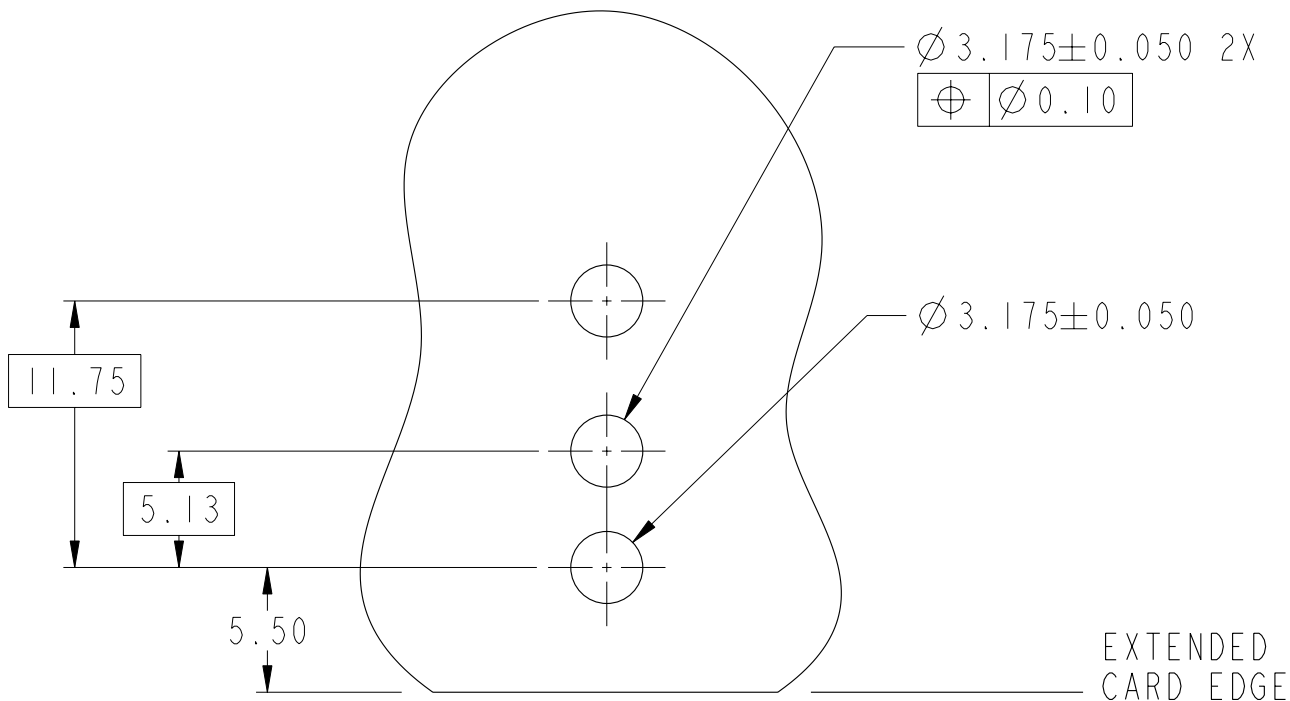
M3 x 0.5-6H
x 3.0 DP.

rev	ecn no	dr	date
A	V05-0557	AR	2005-06-07
B	S08-0056	CH	2008-06-02
-	-	-	-
-	-	-	-
-	-	-	-
-	-	-	-

www.fciconnect.com			surface - - ✓ -		tolerance std ASME Y14.5 -		projection 		 mm	
			TOLERANCES UNLESS OTHERWISE SPECIFIED							
Dr	T. HOUTZ	2004-12-15	ANGULAR	LINEAR	0.X		±		size A4	Scale 2:1
Eng	H. NGO	2004-12-15			0.XX		±			
Chr	C. H. TAN	2008-06-04			0.XXX		±			
Appr	JOEY NG	2008-06-04	0° ±°		ECN				***	
			Product Affairs					Spec ref		
			title 7.2mm R/A GUIDE PIN 4/5 Pr.				dwg no 10044314			Rev. B
			catalog no				CUSTOMER			sheet 1 of 2

PART NUMBER

10044314-101LF



NOTES:

- ① MATERIAL: ZINC ALLOY.
- ② FINISH: ZINC YELLOW CHROMATE.
- ③ APPLICATION SPECIFICATION: GS-20-045.
- ④ REFER TO CUSTOMER DRAWING 10035911 FOR INFORMATION REGARDING PCB LAYOUT OF POWER AND GUIDE MODULES RELATIVE TO SIGNAL MODULES.
- ⑤ RIGHT ANGLE PIN MODULE HAS THE SAME PCB FOOTPRINT AS THE RIGHT ANGLE GUIDE SOCKET.
- 6 THIS PRODUCT MEETS EUROPEAN UNION DIRECTIVES AND OTHER COUNTRY REGULATIONS AS DESCRIBED IN GS-22-008.
- 7 PACKAGING MEETS GS-14-920 LEAD FREE LABELING SPECIFICATION.

SCALE 3:1
SEE NOTE 3, 4, & 5



title 7.2mm R/A GUIDE PIN
4/5 Pr.
catalog no -

dwg no 10044314

Rev. B

CUSTOMER sheet 2 of 2