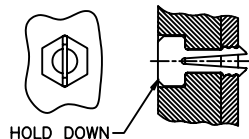


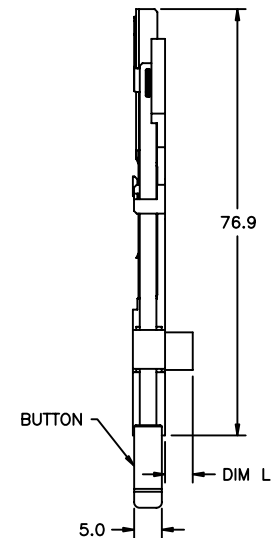
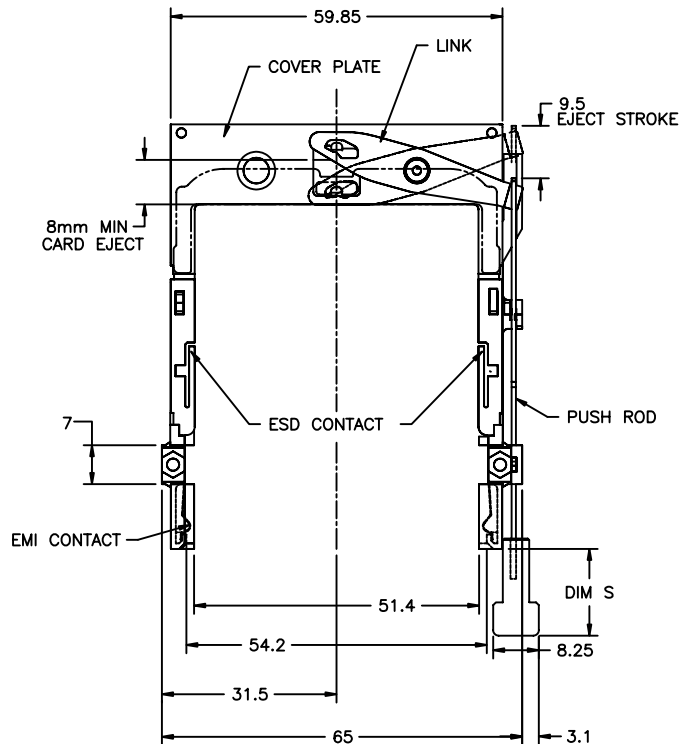
PRODUCT NO. NOTE ⑤	STAND-OFF DIM L	DIM S	BUTTON COLOR
95079-00CA	0	13	BLACK
95079-02CA	2		
95079-02CALF	2		
95079-04CA	4		
95079-05CA	5	15.6	BLACK
95079-00DA	0		
95079-02DA	2		
95079-04DA	4		
95079-05DA	5	21	BLACK
95079-00FA	0		
95079-02FA	2		
95079-04FA	4		
95079-05FA	5	13	NATURAL
95079-00CH	0		
95079-02CH	2		
95079-04CH	4		
95079-05CH	5	15.6	NATURAL
95079-00DH	0		
95079-02DH	2		
95079-04DH	4		
95079-05DH	5	21	NATURAL
95079-00FH	0		
95079-02FH	2		
95079-04FH	4		
95079-05FH	5		

NOTES:

- EJECT PLATE TO MOVE ALONG INSIDE WALL OF COVER PLATE SMOOTHLY AFTER ASSEMBLING WITH HEADER.
- MATERIAL:
PLASTIC GUIDES: POLYPHTHARAMIDE UL94V-0 BLACK
COVER PLATE: STAINLESS STEEL
EMI CONTACT: PHOSPHOR BRONZE
- FINISH:
EMI CONTACT:
CONTACT AREA: 0.5um Au
UNDER PLATING: 2.0um Ni
- ADD "H" TO PART NUMBER FOR OPTIONAL HOLD DOWN (2 PER ASSEMBLY).



- RECOMMENDED SCREW TORQUE: 1.0 TO 1.5 MAX in-lbs. (1.2-1.7 cm-kgs).



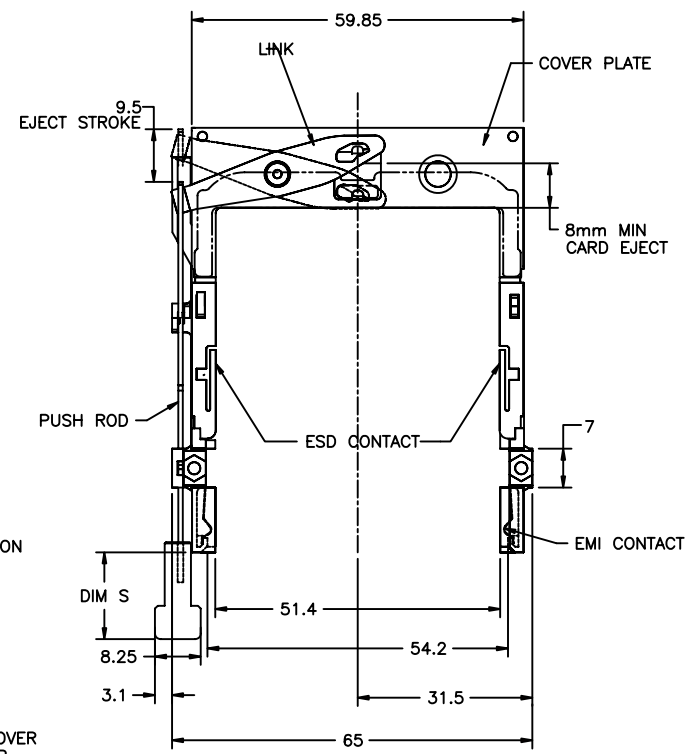
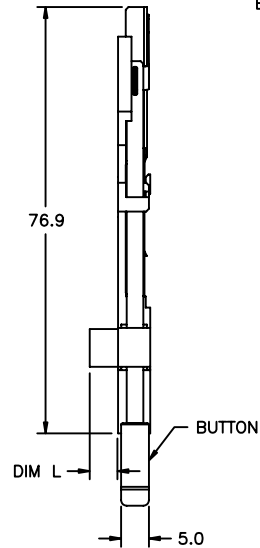
mat'l. code				surface		tolerance		projection		product family										
ltr ecn no dr date				tolerances unless otherwise specified								title								
F	V91417	CGC	7/2/99	angles		linear		±0.15				NARROW BODY FRONT EJECT TYPE 123 MECHANISM ASS'Y								
G	V03-0522	WL	05/29/03																	
H	T03-0485	WL	11/03/03	±2'						scale										
J	N06-0034	M Z	02/13/06	dr	Mike Zhou		05/25/06				dwg no				sheet 1 of 3				size	
K	N06-0135	M Z	05/25/06	engr	Mike Zhou		05/25/06				95079				A4					
L	N06-0110	M Z	06/29/06	chr	Mike Zhou		05/25/06													
				appr	Qin David		05/25/06													
sheet index		revision		L	K	A														
		sheet		1	2	3														

FCI CONFIDENTIAL

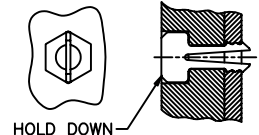
FCI
FCIconnect.com

This document is the property of and embodies CONFIDENTIAL and PROPRIETARY information of FCI. No part of the information shown on this document may be used in any way or disclosed to others without the written consent of FCI. Copyright FCI.

PRODUCT NO. NOTE ⑤	STAND-OFF DIM L	DIM S	BUTTON COLOR
95079-10CA	0	13	BLACK
95079-10CALF	0		
95079-12CA	2		
95079-14CA	4		
95079-15CA	5		
95079-15CAH	5	15.6	BLACK
95079-10DA	0		
95079-12DA	2		
95079-14DA	4		
95079-15DA	5		
95079-10FA	0	21	BLACK
95079-12FA	2		
95079-14FA	4		
95079-15FA	5		
95079-10CH	0	13	NATURAL
95079-12CH	2		
95079-14CH	4		
95079-15CH	5		
95079-10DH	0	15.6	NATURAL
95079-12DH	2		
95079-14DH	4		
95079-15DH	5		
95079-10FH	0	21	NATURAL
95079-12FH	2		
95079-14FH	4		
95079-15FH	5		



- NOTES:
- EJECT PLATE TO MOVE ALONG INSIDE WALL OF COVER PLATE SMOOTHLY AFTER ASSEMBLING WITH HEADER.
 - MATERIAL:
PLASTIC GUIDES: POLYPHTHARAMIDE UL94V-0 BLACK
COVER PLATE: STAINLESS STEEL
EMI CONTACT: PHOSPHOR BRONZE
 - FINISH:
EMI CONTACT:
CONTACT AREA: 0.5um Au
UNDER PLATING: 2.0um Ni
 - ADD "H" TO PART NUMBER FOR OPTIONAL HOLD DOWN (2 PER ASSEMBLY).



- 5 RECOMMENDED SCREW TORQUE: 1.0 TO 1.5 MAX in-lbs. (1.2-1.7 cm-kgs).

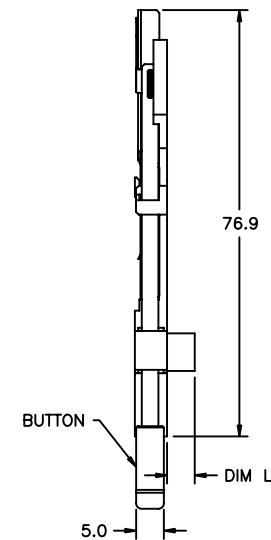
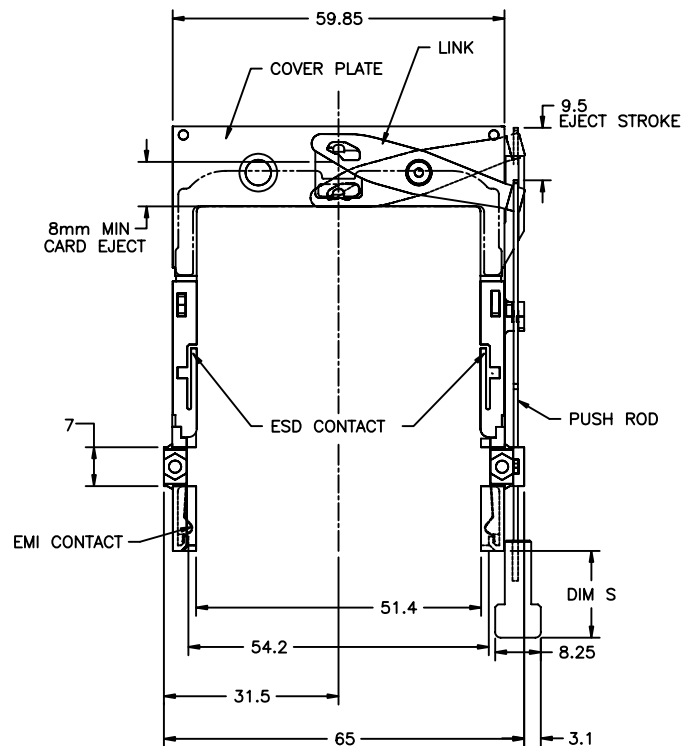
mat'l. code				surface	tolerance	projection	product family			
ltr	ecn	nodr	date	tolerances unless otherwise specified		 MM scale	title			
K				angles	linear		NARROW BODY FRONT EJECT TYPE 123 MECHANISM ASS'Y			
				±2°			dwg no 95079 sheet2of3 size A4			
				dr	Mike Zhou	05/25'06				
				engr	Mike Zhou	05/25'06				
				chr	Mike Zhou	05/25'06				
				appd	Qin David	05/25'06				
sheet	revision						type CUSTOMER Drawing			
index	sheet									

FCI CONFIDENTIAL

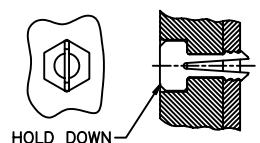
FCI
FCIconnect.com

This document is the property of and embodies CONFIDENTIAL and PROPRIETARY information of FCI. No part of the information shown on this document may be used in any way or disclosed to others without the written consent of FCI. Copyright FCI.

PRODUCT NO. NOTE ⑤	STAND-OFF DIM L	DIM S	BUTTON COLOR
95079-00MCA	0	13	BLACK



- NOTES:
- EJECT PLATE TO MOVE ALONG INSIDE WALL OF COVER PLATE SMOOTHLY AFTER ASSEMBLING WITH HEADER.
 - MATERIAL:
PLASTIC GUIDES: POLYPHTHARAMIDE UL94V-0 BLACK
COVER PLATE: STAINLESS STEEL
EMI CONTACT: PHOSPHOR BRONZE
 - FINISH:
EMI CONTACT:
CONTACT AREA: 0.5um Au
UNDER PLATING: 2.0um Ni
 - ADD "H" TO PART NUMBER FOR OPTIONAL HOLD DOWN (2 PER ASSEMBLY).



- 5 RECOMMENDED SCREW TORQUE: 1.0 TO 1.5 MAX in-lbs. (1.2-1.7 cm-kgs).

mat'l. code		surface	tolerance	projection	product family	
ltr	ecn	nodr	date	tolerances unless otherwise specified		title
A				angles	linear	NARROW BODY FRONT EJECT TYPE 123 MECHANISM ASS'Y
				±0.15		
				±2°		
				dr	Mike Zhou	05/25'06
				engr	Mike Zhou	05/25'06
				chr	Mike Zhou	05/25'06
				appd	Qin David	05/25'06
sheet	revision					
index	sheet					



PDM: Rev:L

STATUS: Released

Printed: Feb 06, 2008