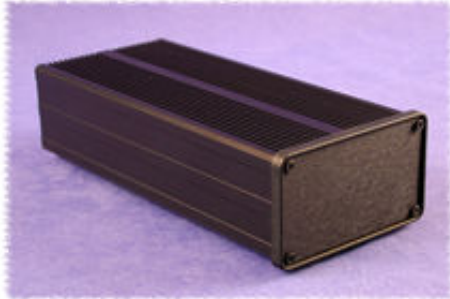




Extruded Aluminum Enclosures (Sink Box Series)

[Home](#)
[Products](#)
[Distributors](#)
[Technical](#)
[Contact Us](#)
[Other Options](#)

Path: [Home](#) > [Enclosure Index](#) > **Extruded Aluminum (Sink Box Series)**



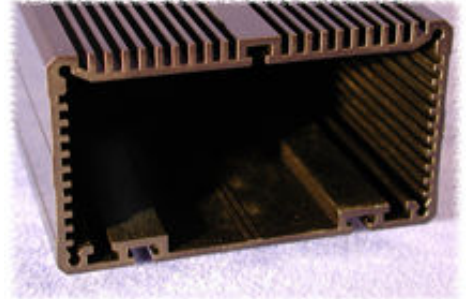
(click to enlarge)

**Assembled View
(Top)**



(click to enlarge)

**Assembled View
(Bottom)**

















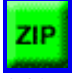
(click to enlarge)

Open End View

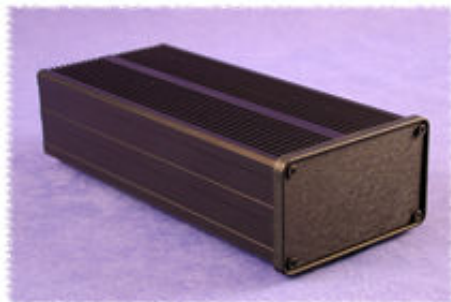
Key Features:

- The Sink Box series is a British designed extruded aluminum enclosure (originally sold under the West Hyde Enclosures Ltd. name).
- Ideally suited for mounting small printed circuit boards or chassis horizontally.
- The enclosure body is formed from a single, hollow aluminum extrusion. This gives the unit high strength as well as simplifying assembly.
- The aluminum extrusion has fins on one side (the top) which act as a heat sink. Aluminum end panels are attached to each end.
- Extrusions are anodized in a choice of either black or clear.
- The interior of the enclosure contains:
 - numerous slots on both of the shorter sides to accept a P.C. board or chassis.
 - three "T" slots (one in the top and two in the bottom) which provide an alternative method of mounting chassis or components that need to be cooled by conduction.
 - the single "T" slot in the top takes an M3 half-nut.
 - the two "T" slots in the bottom take M4 half-nuts.
- The exterior of the enclosure contains:
 - heat sink fins across the entire top.
 - two "T" slots on the bottom to allow mounting of wall brackets, belt attachment or to connect to another enclosure.
 - the two bottom "T" slots take M4 half-nuts.
- Also includes molded black plastic bezels which can be used to protect the end panels.
- End panel assembly screws are included.

Part Number	Color	 Reader File	AutoCAD .dwg File (zipped)	Designed For P.C.B. Width of	Units	Length	Width	Height
------------------------	--------------	---	---	---	--------------	---------------	--------------	---------------

431609 531609	Black Clear	 143K	 204K	85mm	Inches	3.94	3.52	2
					mm	100	90	51
431612 531612	Black Clear	 151K	 206K	85mm	Inches	5.91	3.52	2
					mm	150	90	51
431610 531610	Black Clear	 143K	 238K	85mm	Inches	7.87	3.52	2
					mm	200	90	51
431611 531611	Black Clear	 143K	 237K	100mm	Inches	4.92	4.13	2.36
					mm	125	105	60
431621 531621	Black Clear	 143K	 206K	100mm	Inches	6.5	4.13	2.36
					mm	165	105	60
431622 531622	Black Clear	 143K	 206K	100mm	Inches	8.86	4.13	2.36
					mm	225	105	60
431623 531623	Black Clear	 143K	 240K	100mm	Inches	11.22	4.13	2.36
					mm	285	105	60

Color Options:



(click to enlarge)

Black Anodized

Photo Available Soon

Clear Anodized

Replacement End Panels:

Part Number (Pair of Panels)	Fits Enclosure Part Number
031623	431609 531609
031623	431612 531612

031623	431610 531610
031624	431611 531611
031624	431621 531621
031624	431622 531622
031624	431623 531623

Exactly what you are looking for???

Link to our stocking distributors - most have "on-line" pricing, stock check and ordering!!!

Our Distributors

[Order from your favorite distributor](#)

[Home](#) | [Products](#) | [Distributors](#) | [Technical](#) | [Contact Us](#) | [Other Options](#)

Copyright; © 2006-2014 Hammond Mfg Co Inc
URL: <http://www.hammondmfg.com>