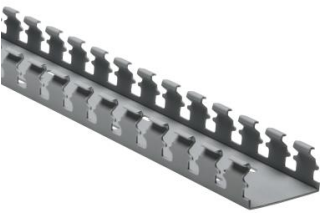


Specification Sheet

Part Number: 181-21004



Slotted Wall Wiring Duct, 2" x 1", Non-Adhesive, PVC, Gray, 30ft/Box

Article Number	181-21004
Type	SL2X1
Color	Gray (GY)
Features & Benefits	<ul style="list-style-type: none"><li>• Strong fingers prevent unwanted breaking.</li><li>• Fingers are easily deflected outward, allowing ready positioning of the wires within the slotted wall duct.</li><li>• Restricted opening design in the finger of the duct helps keep wires in place.</li><li>• Restricted opening prevents unintended removal of wires and permits any individual wire to be traced without disconnection.</li><li>• Supplied with mounting holes to streamline installation.</li><li>• Optional covers enhance protection and appearance.</li></ul>
Quantity Per	box

<b>Product Description</b>	Pro-Duct slotted wall wiring duct features break-away fingers which provide additional access for wire leads. Each section of the duct is provided with two score lines. The upper score line is used to break away fingers when a wider opening is required. The lower score line allows the sidewall to be smoothly cut for joints and Ts.
<b>Short Description</b>	Slotted Wall Wiring Duct, 2" x 1", Non-Adhesive, PVC, Gray, 30ft/Box
<b>Global Part Name</b>	SL2X1-PVC-GY
<b>Technical Description</b>	Non-Adhesive
<b>Length L (Imperial)</b>	6.0
<b>Length L (Metric)</b>	1.83
<b>Width W (Imperial)</b>	2.0
<b>Width W (Metric)</b>	50.8
<b>Height H (Imperial)</b>	1.06
<b>Height H (Metric)</b>	26.9
<b>Mounting Hole Centers (Imperial)</b>	4.0
<b>Material</b>	Polyvinylchloride (PVC)
<b>Material Shortcut</b>	PVC

<b>Flammability</b>	Self-Extinguishing
<b>Halogen free</b>	No
<b>Operating Temperature (Metric)</b>	+122°F (+50°C)
<b>Reach Complaint(Article 33)</b>	No
<b>ROHS Complaint</b>	Yes
<b>Certification/Specification WEB</b>	EN 50085-2-3_1A UL CSA EN 50085-1:2005 + A1:2013
<b>UL Recognized (US)</b>	Yes
<b>Package Quantity(Imperial)</b>	30
<b>Package Quantity (Metric)</b>	9.14
<b>Customs Number</b>	3925900000