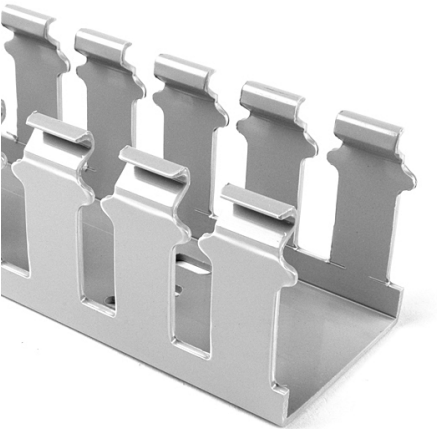


Specification Sheet

Part Number: 181-44027



Slotted Wall Wiring Duct, 4" x 4", Non-Adhesive, PVC, Gray, 120ft/Carton

Article Number	181-44027
Type	SL4X4
Color	Gray (GY)
Features & Benefits	<ul style="list-style-type: none">• Strong fingers prevent unwanted breaking.• Fingers are easily deflected outward, allowing ready positioning of the wires within the slotted wall duct.• Restricted opening design in the finger of the duct helps keep wires in place.• Restricted opening prevents unintended removal of wires and permits any individual wire to be traced without disconnection.• Supplied with mounting holes to streamline installation.• Optional covers enhance protection and appearance.
Quantity Per	carton

Product Description	Pro-Duct slotted wall wiring duct features break-away fingers which provide additional access for wire leads. Each section of the duct is provided with two score lines. The upper score line is used to break away fingers when a greater opening is required. The lower score line allows the sidewall to be smoothly cut for joints and Ts.
Short Description	Slotted Wall Wiring Duct, 4" x 4", Non-Adhesive, PVC, Gray, 120ft/Carton
Global Part Name	SL4X4-PVC-GY
Technical Description	Non-Adhesive
Length L (Imperial)	6.0
Length L (Metric)	1.83
Width W (Imperial)	4.0
Width W (Metric)	101.6
Height H (Imperial)	4.07
Height H (Metric)	103.4
Mounting Hole Centers (Imperial)	4.0
Material	Polyvinylchloride (PVC)
Material Shortcut	PVC

Flammability	Self-Extinguishing
Halogen free	No
Operating Temperature (Metric)	+122°F (+50°C)
Reach Complaint(Article 33)	No
ROHS Complaint	Yes
Certification/Specification WEB	EN 50085-2-3_1A EN 50085-1:2005 + A1:2013 UL CSA
UL Recognized (US)	Yes
Package Quantity(Imperial)	120
Package Quantity (Metric)	36.58
Customs Number	3925900000