

Installation instructions for 230PC stainless steel housed pressure sensors

PK 87773

230PC Stainless Steel Housed Pressure Sensors

PK 87773

GENERAL INFORMATION

230PC pressure sensors are four-active-element piezoresistive bridges. When pressure is applied, an output voltage proportional to pressure is produced.

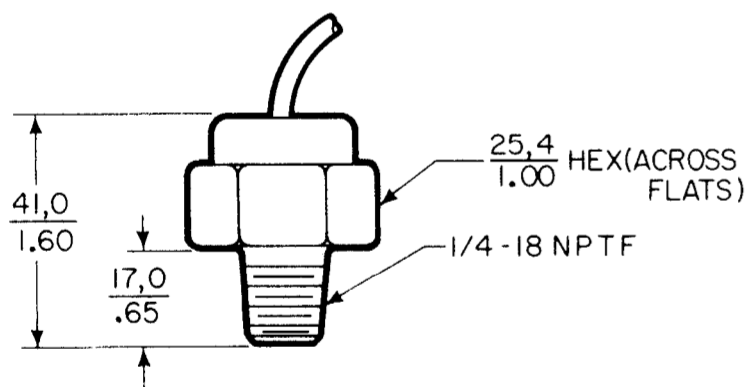
Gage pressure is measured with respect to atmospheric (room) pressure reference. The output increases for pressure above atmospheric, and decreases for pressure below. The remote atmospheric pressure reference is inside the termination cable, reducing the chance of contaminants entering the sensor enclosure.

MEASURAND

230PC series pressure sensors are compatible with most input media, but are specifically restricted by those which will not attack silicon, glass, 300 series stainless steel, or urethane based epoxy.

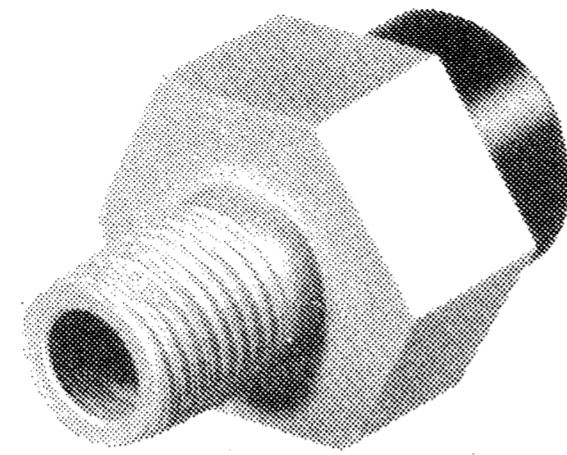
MOUNTING DIMENSIONS

(For reference only)



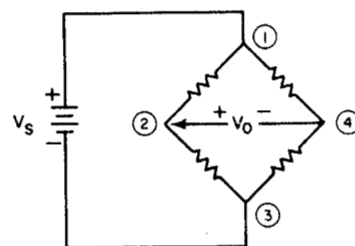
LEADWIRE COLOR CODE

- 1 - Red, Vs
- 2 - White, Output A
- 3 - Black, Ground
- 4 - Green, Output B

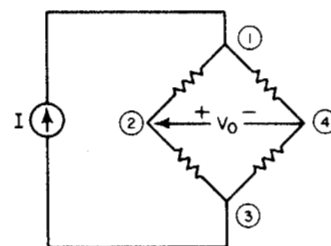


ELECTRICAL CONNECTIONS

Voltage
234/236PC



Current
234PC



NOTES:

1. The circled numbers refer to sensor termination.
2. Vo increases with pressure difference.
3. Vo = V2 - V4 (referenced to point 3).
4. Current excitation (234PC) provides reduced sensitivity variation with temperature.

WARRANTY/REMEDY

Seller warrants its products to be free from defects in design, material and workmanship under normal use and service. Seller will repair or replace without charge any such product it finds to be so defective on its return to Seller within 18 months after date of shipment by Seller. **The foregoing is in lieu of all other expressed or implied warranties (except of title) including those of merchantability and fitness for a particular purpose.** The foregoing is also purchaser's sole remedy and is in lieu of all other guarantees, obligations, or liabilities or any consequential, incidental, or punitive damages attributable to negligence or strict liability, all by way of example.

230PC SPECIFICATIONS at 10.0 ± 0.01VDC Excitation, 25°C (unless otherwise noted)

Parameter	Pressure Range	Type*	Min.	Typ.	Max.	Units
F.S.O. (Full Scale Output)**	0-5 psi	234	80	115	150	m V
		236	48	50	52	
	0-15 psi	234	175	250	325	m V
		236	98.5	100	101.5	
	0-30 psi	234	110	195	280	m V
		236	78	80	82	
	0-60 psi	234	90	135	180	m V
		236	58	60	62	
	0-100 psi	234	150	225	300	m V
		236	98	100	102	
	0-150 psi	234	90	127.5	165	m V
		236	58	60	62	
Null Offset	All	234	-40	0	+40	m V
		236		0	+2	
Recommended Excitation	All	Voltage	234	10	12	VDC
		Current	234	2	2.4	mA
		Voltage	236	10	16	VDC
Input Resistance	All	234		5 K		Ohms
		236		6.8K		
Overpressure	0-5 psi	All			20	psi
	0-15 psi				45	
	0-30 psi				60	
	0-60 psi				100	
	0-100 psi				150	
	0-150 psi				225	
Operating Temperature	All	All	-30°C to + 70°C (-22°F to + 158°F)			
Storage Temperature	All	All	-40°C to + 105°C (-40°F to + 221°F)			

* 234PC - basic sensor

236PC - trimmed plus thermistor (low sensitivity shift with temperature)

** F.S.O. is the algebraic difference between end points (output at minimum and maximum pressure)

While we provide application assistance on MICRO SWITCH products, personally and through our literature, it is up to the customer to determine the suitability of the product in the application.

MICRO SWITCH
a Honeywell Division

MICRO SWITCH
a Honeywell Division