

MODEL DWG. NO. 726446 SH 1 REV C

SPECIFICATION DATA

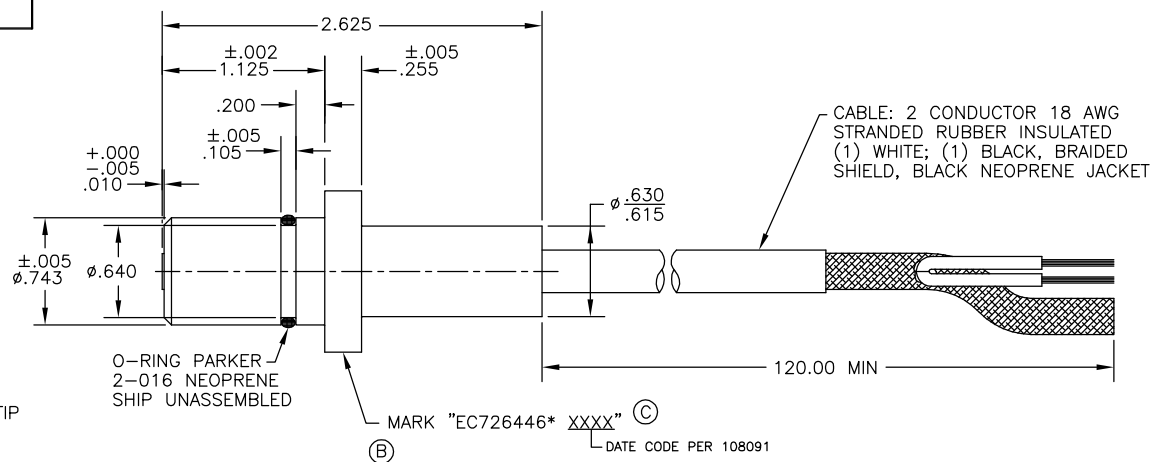
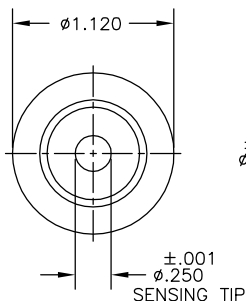
PARAMETER	VALUE
OUTPUT VOLTAGE	18V Pk-Pk MIN
COIL RESISTANCE	180 OHMS MAX
INDUCTANCE	80mH MAX @ 1KHz
DIELECTRIC STRENGTH	500V RMS AT 60HZ FOR 1 MIN MAX NOT TO EXCEED 100V PER SECOND
LEAKAGE RESISTANCE	100 MEGOHMS MINIMUM
TEMPERATURE LIMITS	-40°F TO +140°F
CUSTOMER DWG NO	

NOTES:

1. TESTED AT 1000 I.P.S. WITH A 8 PITCH GEAR AT .050" CLEARANCE AND A LOAD OF 1K OHMS.
2. SEE PRODUCTION DRAWING FOR APPLICABLE REVISION LETTER *.
3. CUSTOMER: STATEN ISLAND RAPID TRANSIT.
4. POLARITY: WHITE LEAD WILL BE POSITIVE WITH RESPECT TO BLACK LEAD UPON THE APPROACH OF FERROUS METAL.

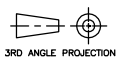
REVISIONS

REV.	DESCRIPTION	DATE	APPROVAL
B	MARK WAS ROLL DIE CN2278	7/15/02	QEQ
C	ADDED DATE CODE CN2525	2/11/03	QEQ



CABLE: 2 CONDUCTOR 18 AWG STRANDED RUBBER INSULATED (1) WHITE; (1) BLACK, BRAIDED SHIELD, BLACK NEOPRENE JACKET

THIS IS A COMPUTER GENERATED DRAWING
MANUAL REVISIONS WILL NOT BE RECORDED



UNLESS OTHERWISE SPECIFIED
DIMENSIONS ARE IN INCHES
.XXX DECIMAL ± .010
.XX DECIMAL ± .03
FRACTIONS ± 1/32
ANGLES ± 5°
RUNOUT .008 FIM
125/RMS OR BETTER ON
MACHINED PARTS.
BREAK SHARP CORNERS
.005/.015 NO BURRS

DO NOT SCALE DRAWING
THIS DOCUMENT IS THE PROPERTY OF ELECTRO CORPORATION AND MAY NOT BE REPRODUCED EITHER IN FULL OR IN PART WITHOUT WRITTEN APPROVAL BY ELECTRO CORPORATION.
MATERIAL:
SHELL IS NON-MAGNETIC
STAINLESS STEEL

DRAWN	DT	4/4/85
CHKD.	MBEAL	5/3/85
ENGR.	HT	5/17/85
MFG.	MH	6/17/85
Q.C.	RSS	5/31/85
SPEC. CONT.		

Honeywell
- Formerly
ELECTRO CORPORATION
SIZE B
FSCM NO. 81692
SCALE NONE

TITLE MAXI-MAG SMTH 0.743 X 2.6 FLG MNT	
MODEL DWG. NO. 726446	REV C
ELECTRO CORPORATION SHRASOTA, FLORIDA U.S.A.	
SHEET 1	OF 1

UNCONTROLLED COPY: REVISIONS WILL NOT BE
AUTOMATICALLY UPDATED. CONFIRM APPROPRIATE
REVISION LEVEL WITH ELECTRO CORPORATION.