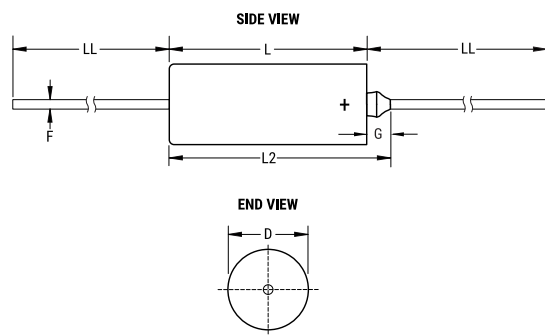


**KEMET Part Number: M39003/09-2051**  
(T262D107K020BS, M39003/09-2051{KEM}, CSR21E107KB)

T262 CSR21, Tantalum, MnO2 Tantalum, Military/High Reliability, 100 uF, 10%, 20 VDC, 75 mOhms




**Dimensions**

<b>D</b>	8.92mm +/-0.25mm
<b>L</b>	19.96mm +/-0.79mm
<b>L2</b>	23.42mm
<b>LL</b>	38.1mm +/-6.35mm
<b>F</b>	0.64mm +/-0.05mm
<b>G</b>	3.46mm +0.79mm

**Packaging Specifications**

<b>Packaging:</b>	Tray
<b>Packaging Quantity:</b>	20

**General Information**

<b>Series:</b>	T262 CSR21
<b>Dielectric:</b>	MnO2 Tantalum
<b>Style:</b>	Axial Hermetic
<b>Description:</b>	Axial, Solid Tantalum, Hermetically Sealed, Military, CSR21 Style
<b>Features:</b>	Low ESR, High Current
<b>RoHS:</b>	No
<b>Prop 65:</b>	 <b>WARNING:</b> Cancer and reproductive harm - <a href="http://www.p65warnings.ca.gov">www.p65warnings.ca.gov</a> .
<b>REACH:</b>	SVHC (Pb – CAS 7439-92-1)
<b>Termination:</b>	Lead (SnPb)
<b>Lead:</b>	Wire Leads
<b>Qualifications:</b>	MIL-PRF-39003, CSR21
<b>AEC-Q200:</b>	No
<b>Construction:</b>	Hermetic
<b>Miscellaneous:</b>	Ripple Current Rating Shown Is At 40Khz And 25C; ESR Is Per MIL-PRF-39003/9.
<b>Notes:</b>	Dimensions Include Insulating Sleeve. Lead Length Shown Is For Parts Supplied With Bulk Packaging, When Supplied On T&R Or Ammo, Lead Length Is Determined By Taping Specification

**Specifications**

<b>Capacitance:</b>	100 uF
<b>Capacitance Tolerance:</b>	10%
<b>Voltage DC:</b>	20 VDC (85C), 16 VDC (125C Surge), 0.2 VDC (125C Reverse)
<b>Temperature Range:</b>	-55/+125°C
<b>Dissipation Factor:</b>	8% 1kHz 25C
<b>Failure Rate:</b>	B (0.1%/1000 Hrs)
<b>Resistance:</b>	0.075 Ohms (100kHz)
<b>Ripple Current:</b>	3300 mAmps (100kHz)
<b>Leakage Current:</b>	10 uA
<b>Testing and Reliability:</b>	Standard Testing To MIL-PRF-39003