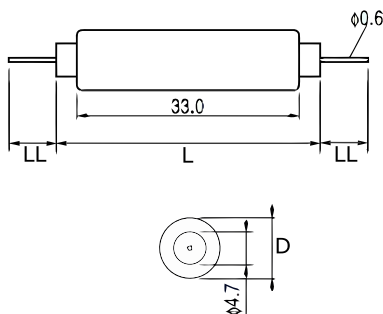


KEMET Part Number: TRS1-20MCR01V
(USEC20MCR01000)

KEMET, TRS, Thermal Reed Switch, Axial, 2.5C Temperature Accuracy, High Reliability, High-Speed Response, Long Operational Life, Excellent Environmental Durability, High Temperature Accuracy, 20°C, Make



General Information

Series:	TRS
Type:	Thermal Reed Switch
Style:	Axial
Description:	Thermal Reed Switch
Features:	High Reliability, High-Speed Response, Long Operational Life, Excellent Environmental Durability, High Temperature Accuracy
Lead:	Wire Leads
RoHS:	Yes

Dimensions

D	7mm NOM
L	40mm NOM
LL	8.5mm NOM

Packaging Specifications

Packaging:	Tray, Box
Packaging Quantity:	600
Weight:	3.4 g

Specifications

Switching Temperature:	20C +/-2.5C
Temperature Range:	-20/+130°C
Contact Type:	Make
Voltage AC:	220 VAC MAX (Opening/Closing)
Current:	0.045 Amps AC MAX (Opening/Closing), 1 mAmps MIN (5VDC, Opening/Closing)
Resistance:	150 mOhms MAX (Contact Resistance)
Max Opening/Closing Power:	10 W (AC)
Max Opening/Closing Voltage:	220 V (AC)
Differential Temperature:	10C Maximum