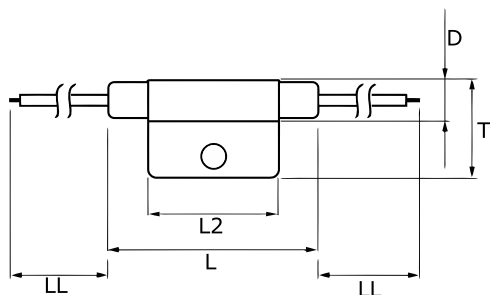


KEMET Part Number: TRS5-115BLRU
(USEG115BLR0000)

KEMET, TRS, Thermal Reed Switch, Axial, 2.5C Temperature Accuracy, High Reliability, High-Speed Response, Long Operational Life, Excellent Environmental Durability, High Temperature Accuracy, 115°C, Break



Dimensions

D	8.2mm MAX
L	50mm MAX
L2	29mm MAX
T	20mm MAX
LL	200mm NOM

Packaging Specifications

Packaging:	Rubberband Box
Packaging Quantity:	600
Weight:	8.5 g

General Information

Series:	TRS
Type:	Thermal Reed Switch
Style:	Axial
Description:	Thermal Reed Switch
Features:	High Reliability, High-Speed Response, Long Operational Life, Excellent Environmental Durability, High Temperature Accuracy
Lead:	Cables
RoHS:	Yes

Specifications

Switching Temperature:	115C +/-2.5C
Temperature Range:	-20/+130°C
Contact Type:	Break
Voltage AC:	140 VAC MAX (Opening/Closing)
Current:	0.5 Amps AC MAX (Opening/Closing), 1 mAmps MIN (5VDC, Opening/Closing)
Resistance:	150 mOhms MAX (Contact Resistance)
Max Opening/Closing Power:	50 W (AC/DC)
Max Opening/Closing Voltage:	140 V (AC)
Differential Temperature:	10C Maximum