

## GABRIELLA-MIDI-M

~25° spot beam with holder and installation tape

### TECHNICAL SPECIFICATIONS:

Dimensions	Ø 37.8 mm
Height	24.1 mm
Fastening	tape, pin
ROHS compliant	yes ⓘ

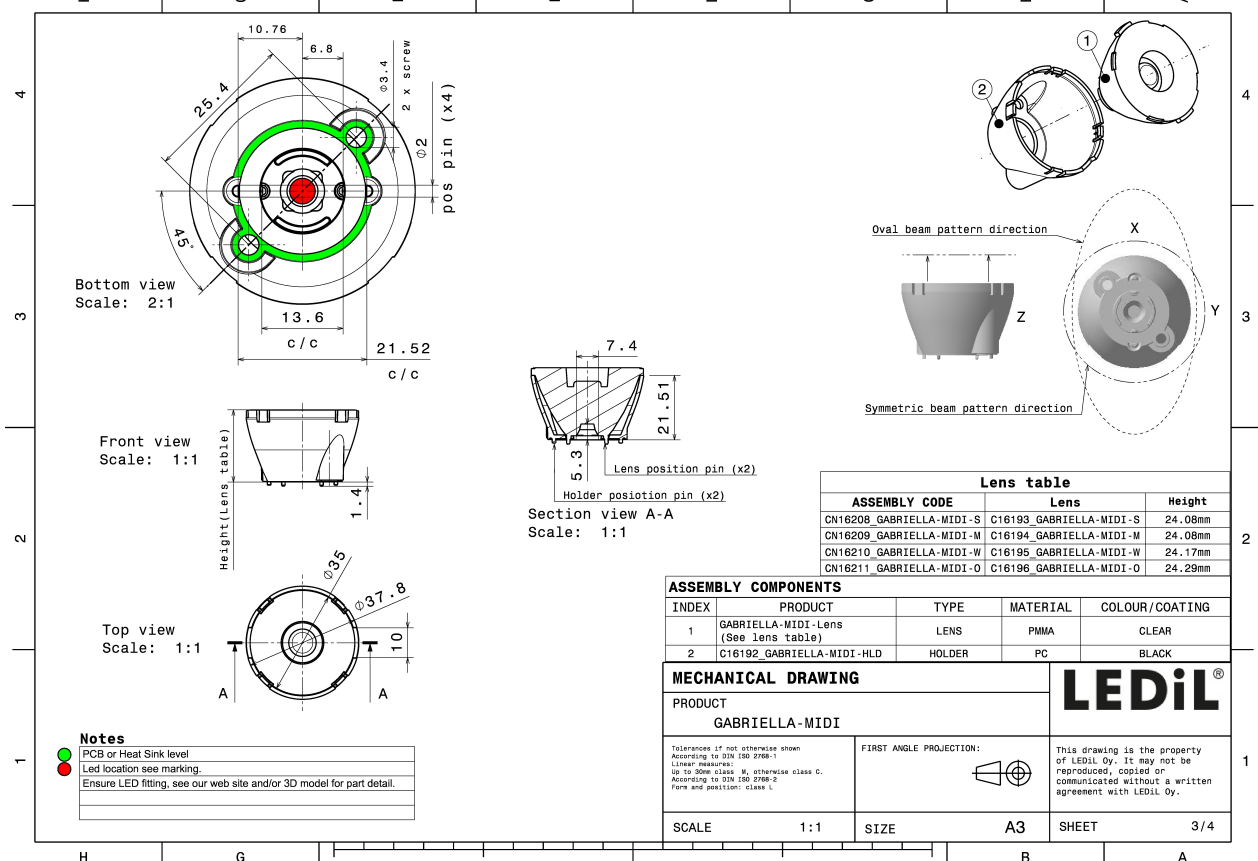
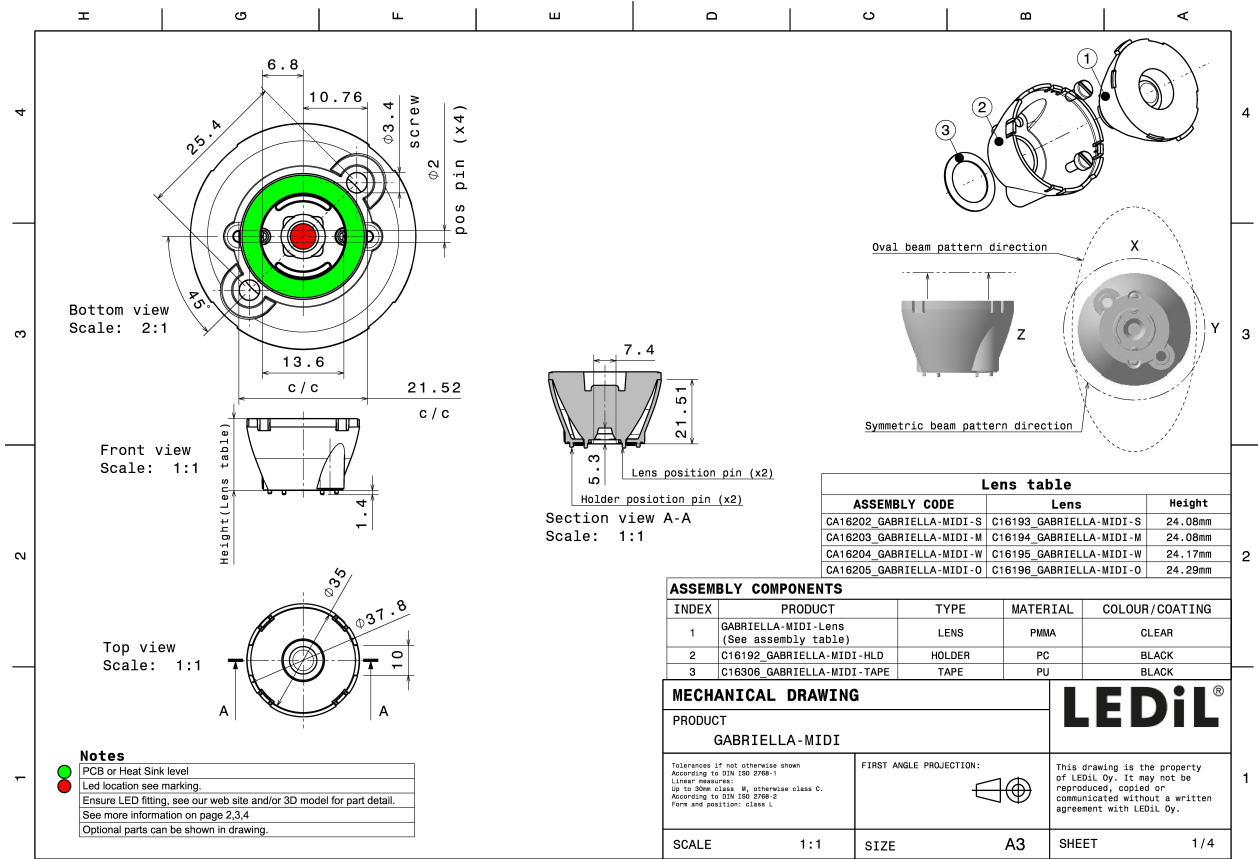
### MATERIAL SPECIFICATIONS:

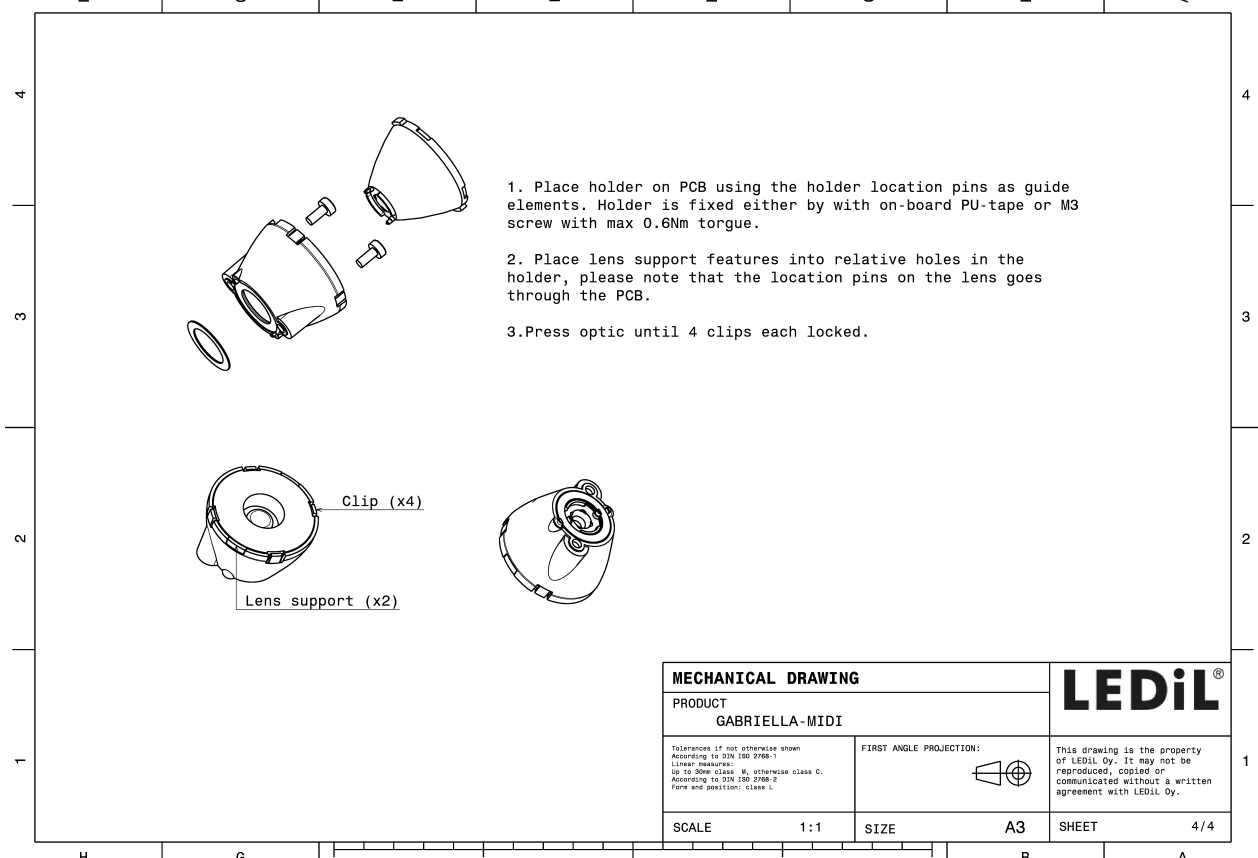
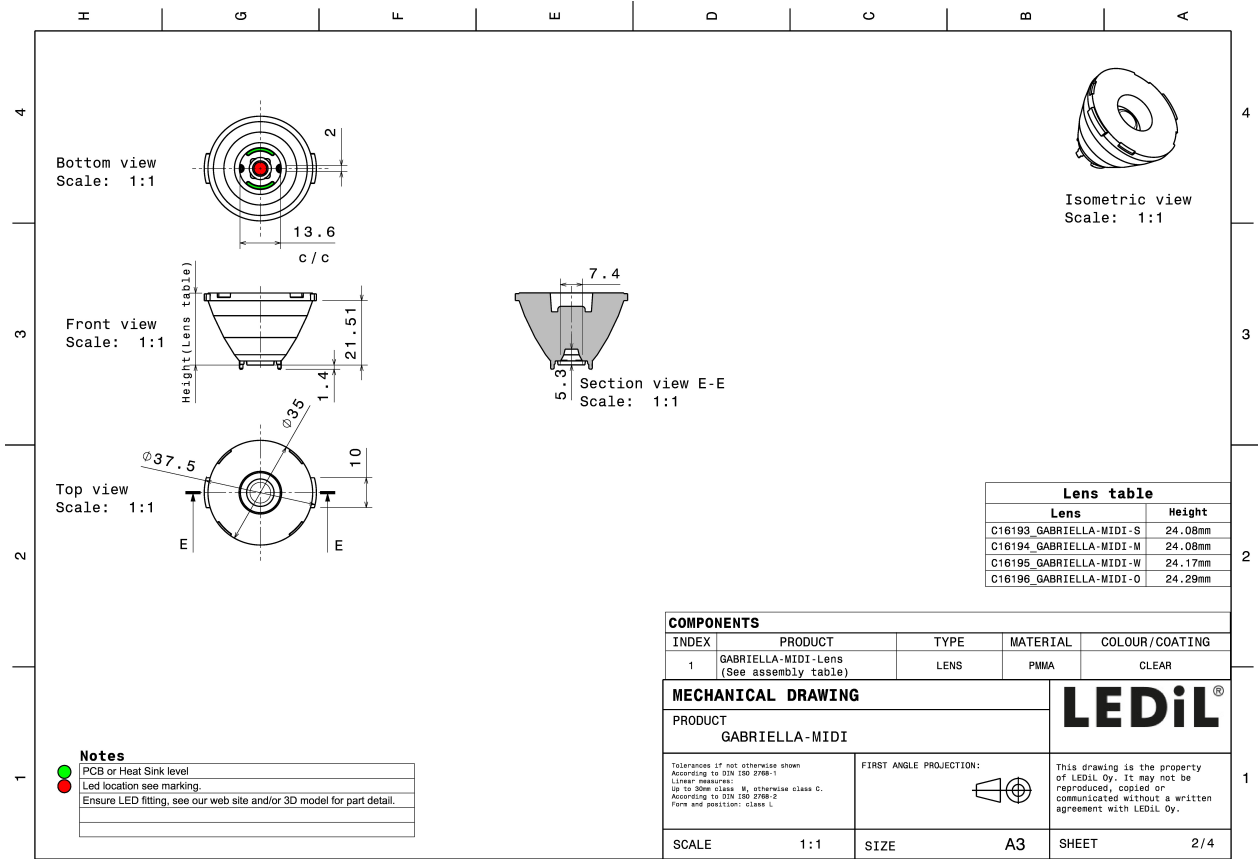
Component	Type	Material	Colour	Finish
GABRIELLA-MIDI-M	Single lens	PMMA	clear	
GABRIELLA-MIDI-HLD	Assembly	PC	black	

### ORDERING INFORMATION:

Component		Qty in box	MOQ	MPQ	Box weight (kg)
CA16203_GABRIELLA-MIDI-M	Single lens	500	100	50	11.5
» Box size: 476 x 273 x 292 mm					



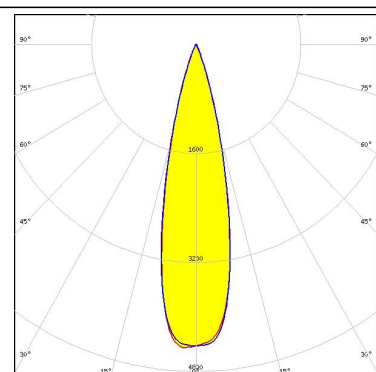
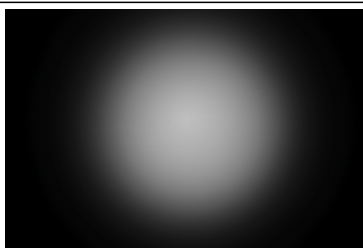




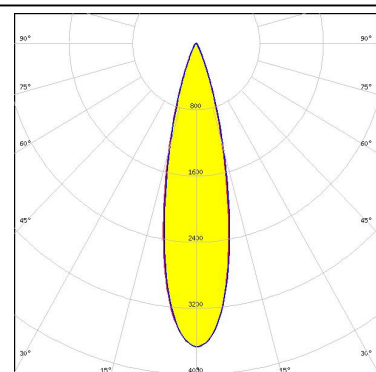
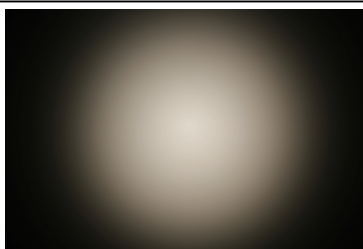
#### PHOTOMETRIC DATA (MEASURED):



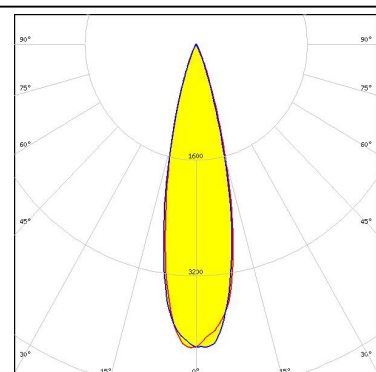
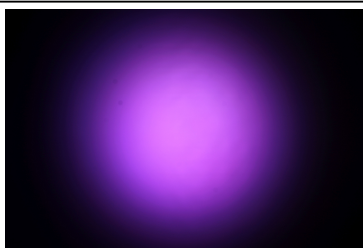
LED XHP35 HI  
FWHM 25.0°  
Efficiency 89 %  
Peak intensity 4.5 cd/Im  
LEDs/each optic 1  
Light colour White  
Required components:



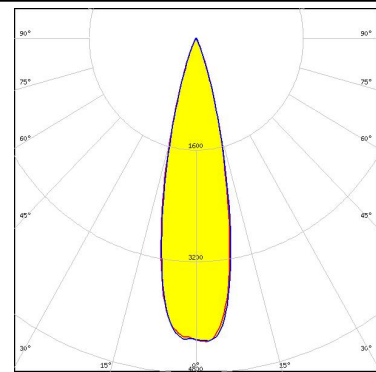
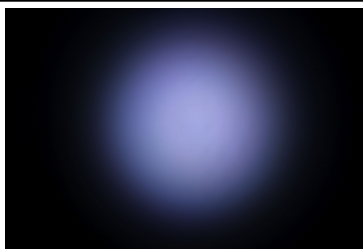
LED XHP50.2  
FWHM 25.0°  
Efficiency 85 %  
Peak intensity 3.7 cd/Im  
LEDs/each optic 1  
Light colour White  
Required components:



LED OSTAR Stage (S2WP)  
FWHM 25.0°  
Efficiency 88 %  
Peak intensity 4.2 cd/Im  
LEDs/each optic 1  
Light colour White  
Required components:


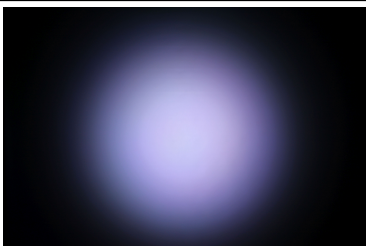
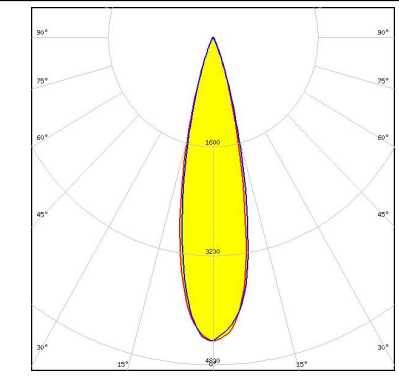

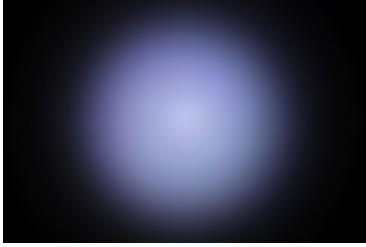
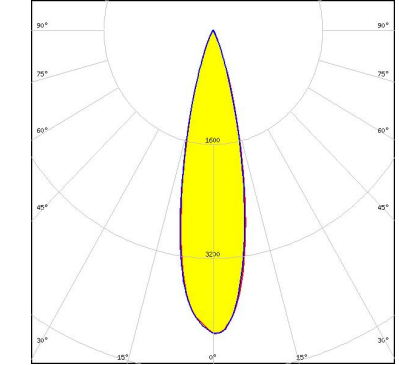


LED SPF05F0A  
FWHM 25.0°  
Efficiency 88 %  
Peak intensity 4.4 cd/Im  
LEDs/each optic 1  
Light colour RGBW  
Required components:





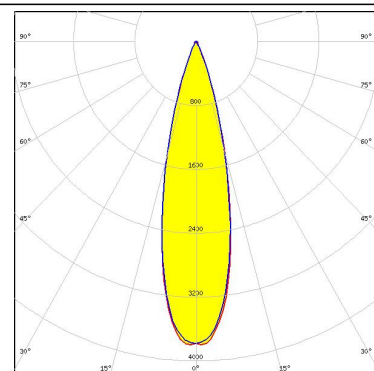
### PHOTOMETRIC DATA (MEASURED):

<p> SEOUL SEMICONDUCTOR</p> <p>LED                    SPF05F0B FWHM                25.0° Efficiency            88 % Peak intensity       4.4 cd/lm LEDs/each optic    1 Light colour         RGBW Required components:</p>		
<p> SEOUL SEMICONDUCTOR</p> <p>LED                    SPF05F0C FWHM                24.0° Efficiency            87 % Peak intensity       4.3 cd/lm LEDs/each optic    1 Light colour         RGBW Required components:</p>		

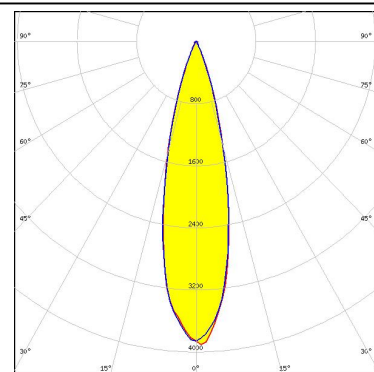
#### PHOTOMETRIC DATA (SIMULATED):



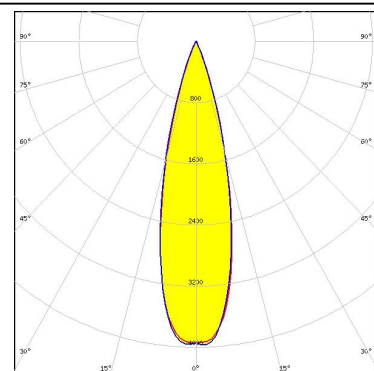
LED J Series 5050  
FWHM 26.0°  
Efficiency 88 %  
Peak intensity 3.8 cd/lm  
LEDs/each optic 1  
Light colour White  
Required components:



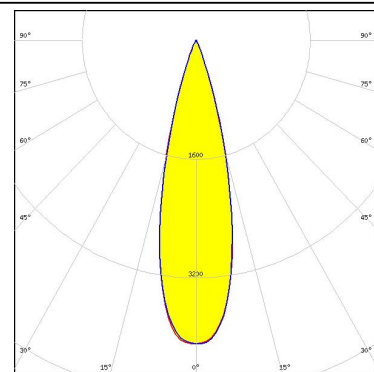
LED XHP50  
FWHM 26.0°  
Efficiency 87 %  
Peak intensity 4 cd/lm  
LEDs/each optic 1  
Light colour White  
Required components:



LED XM-L RGB  
FWHM 26.0°  
Efficiency 88 %  
Peak intensity 4 cd/lm  
LEDs/each optic 1  
Light colour White  
Required components:



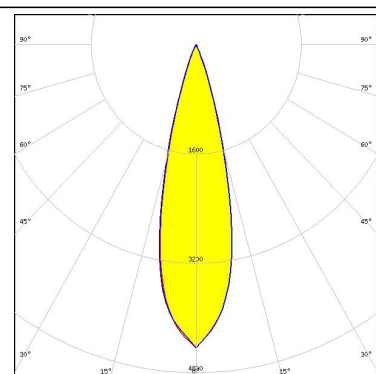
LED XM-L2  
FWHM 27.0°  
Efficiency 88 %  
Peak intensity 4.1 cd/lm  
LEDs/each optic 1  
Light colour White  
Required components:



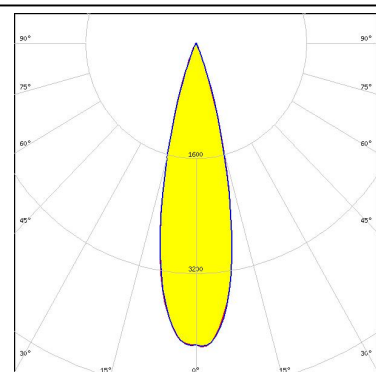
#### PHOTOMETRIC DATA (SIMULATED):



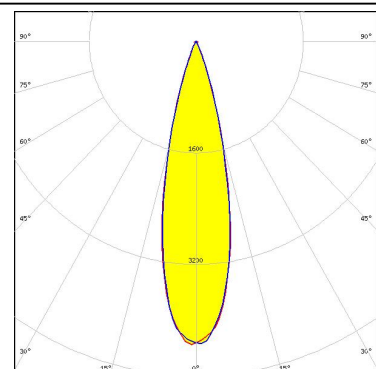
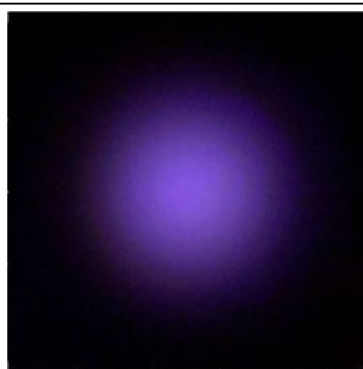
LED XP-G2  
FWHM 26.0°  
Efficiency 89 %  
Peak intensity 4.4 cd/lm  
LEDs/each optic 1  
Light colour White  
Required components:



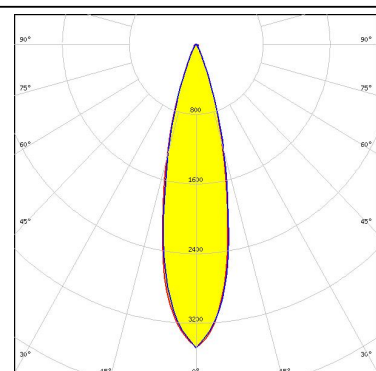
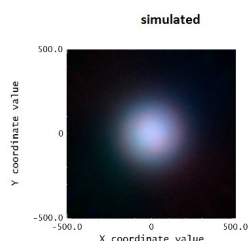
LED XP-G2 HE  
FWHM 26.0°  
Efficiency 88 %  
Peak intensity 4.3 cd/lm  
LEDs/each optic 1  
Light colour White  
Required components:



LED LZ7 Plus (LZ7-04M2PD)  
FWHM 25.0°  
Efficiency 90 %  
Peak intensity 4.4 cd/lm  
LEDs/each optic 1  
Light colour White  
Required components:



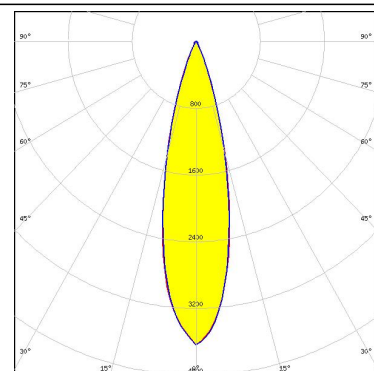
LED LUXEON C  
FWHM 24.0 + °  
Efficiency 83 %  
Peak intensity 3.5 cd/lm  
LEDs/each optic 4  
Light colour RGBW  
Required components:



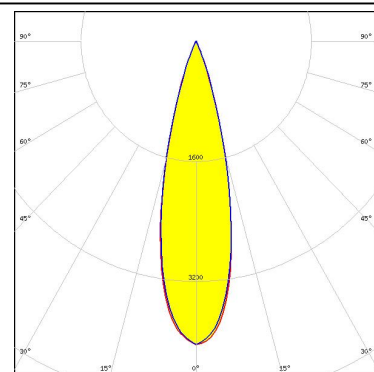
#### PHOTOMETRIC DATA (SIMULATED):



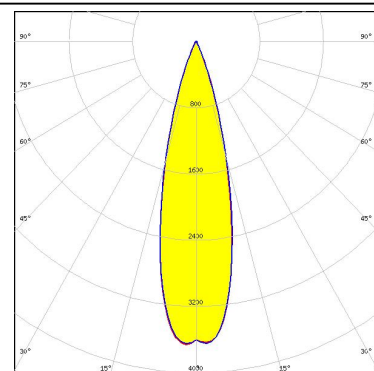
LED LUXEON M/MX  
FWHM 25.0°  
Efficiency 86 %  
Peak intensity 3.6 cd/lm  
LEDs/each optic 1  
Light colour White  
Required components:



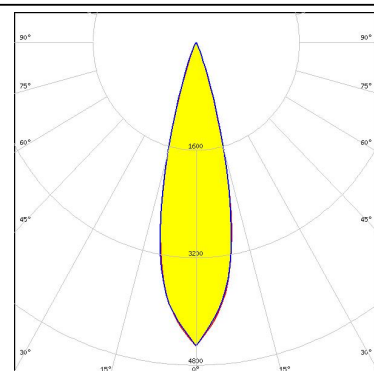
LED LUXEON MZ  
FWHM 26.0°  
Efficiency 88 %  
Peak intensity 4 cd/lm  
LEDs/each optic 1  
Light colour White  
Required components:



LED Duris S8  
FWHM 27.0°  
Efficiency 87 %  
Peak intensity 3.7 cd/lm  
LEDs/each optic 1  
Light colour White  
Required components:



LED OSLO Square EC  
FWHM 26.0°  
Efficiency 89 %  
Peak intensity 4.5 cd/lm  
LEDs/each optic 1  
Light colour White  
Required components:



#### GENERAL INFORMATION:

NOTE: The typical beam angle will be changed by different color, chip size and chip position tolerance. The typical total beam angle is the full angle measured where the luminous intensity is half of the peak value.

#### MATERIALS:

As part of our continuous research and improvement processes, and to ensure the best possible quality and availability of our products, LEDiL reserves the right to change material grades without notice.

#### PRODUCT DATA USER AGREEMENT AND DISCLAIMER:

The measured data in the provided downloadable LEDiL Product Datasheets and Mechanical 2D-Drawings is rounded and provided as reference for planning. LEDiL Oy's optical specifications have been verified by conducting performance testing of the products in accordance with the company's quality system. The reported data are averaged results of multiple measurements with typical variation. LEDiL Oy reserves the right to without prior notification make changes and improvements to its products.

LEDiL Oy assumes neither warranty, nor guarantee nor any other liability of any kind for the contents and correctness of the provided data. The provided data has been generated with highest diligence but the provided data may in reality not represent the complete possible variation range of all intrinsic parameters. Therefore, in certain cases a deviation from the provided data could occur.

LEDiL Oy reserves the right to undertake technical changes of its products without further notification which could lead to changes in the provided data. LEDiL Oy assumes no liability of any kind for the possible deviation from any provided data or any other damage resulting from the usage of the provided data.

The user agrees to this disclaimer and user agreement with the download or usage of the provided files.

#### LEDiL Oy

Joensuunkatu 13  
FI-24240 SALO  
Finland

#### LEDiL Inc.

228 West Page Street  
Suite D  
Sycamore IL 60178  
USA

#### Local sales and technical support

[www.ledil.com/  
where\\_to\\_buy](http://www.ledil.com/where_to_buy)

#### Shipping locations

Salu, Finland  
Hong Kong, China

#### Distribution Partners

[www.ledil.com/  
where\\_to\\_buy](http://www.ledil.com/where_to_buy)