


GABRIELLA-MIDI-S

~10° spot beam with holder

TECHNICAL SPECIFICATIONS:

Dimensions	Ø 37.8 mm
Height	24.1 mm
Fastening	pin, screw
ROHS compliant	yes 

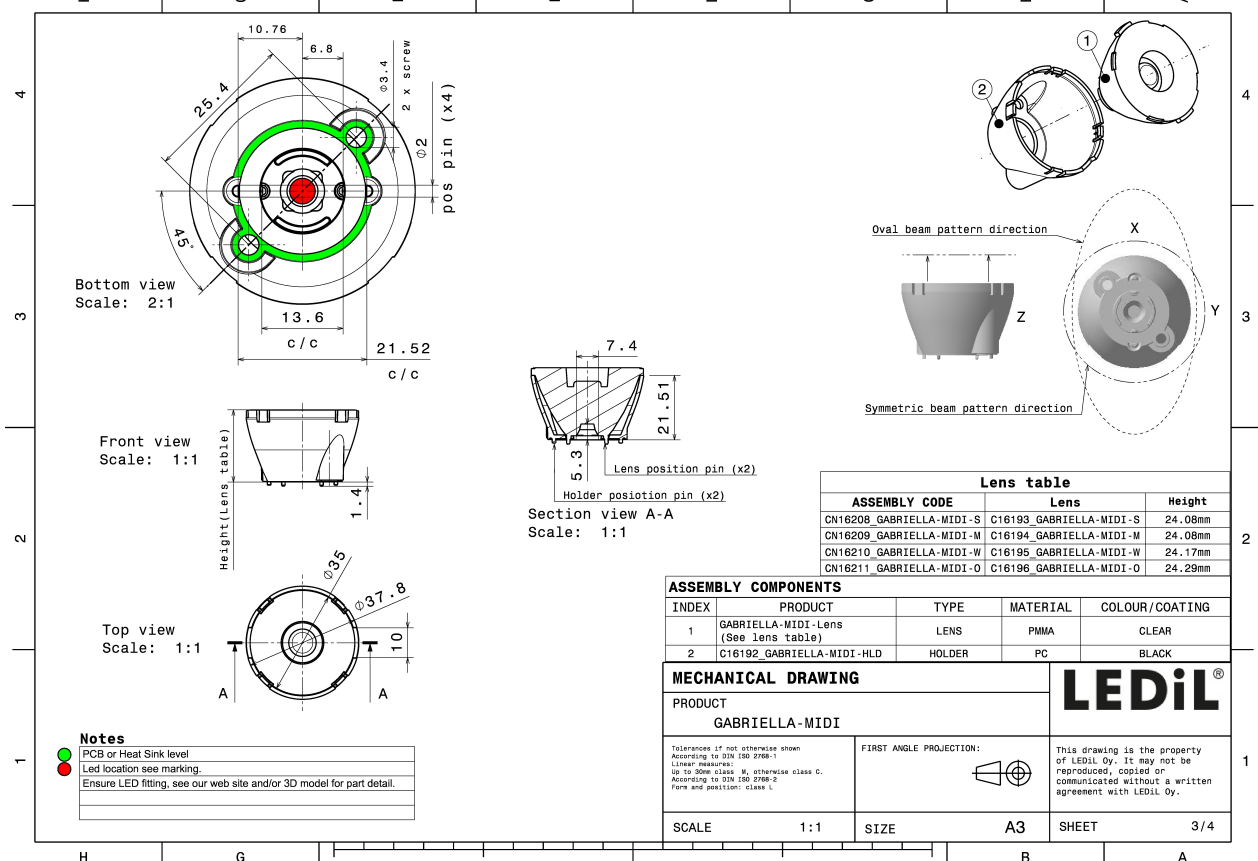
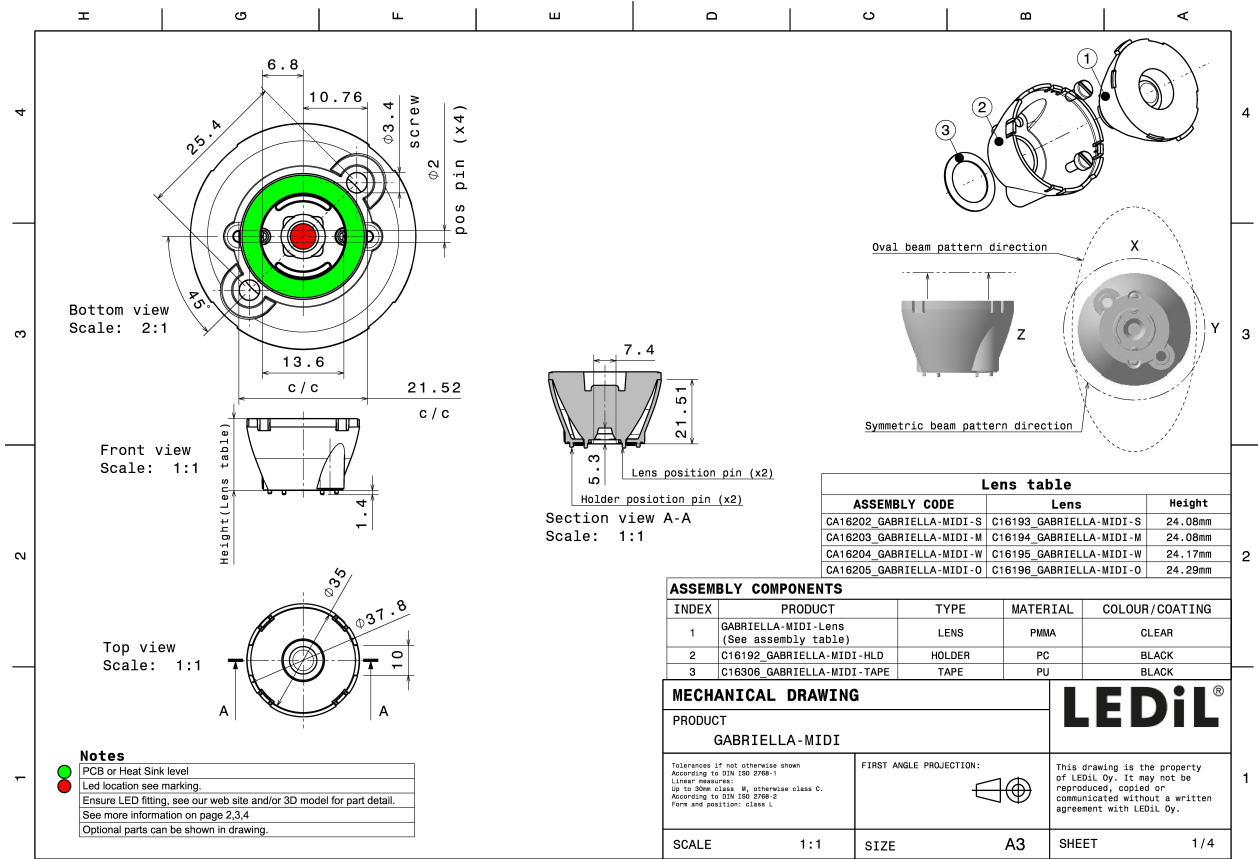
MATERIAL SPECIFICATIONS:

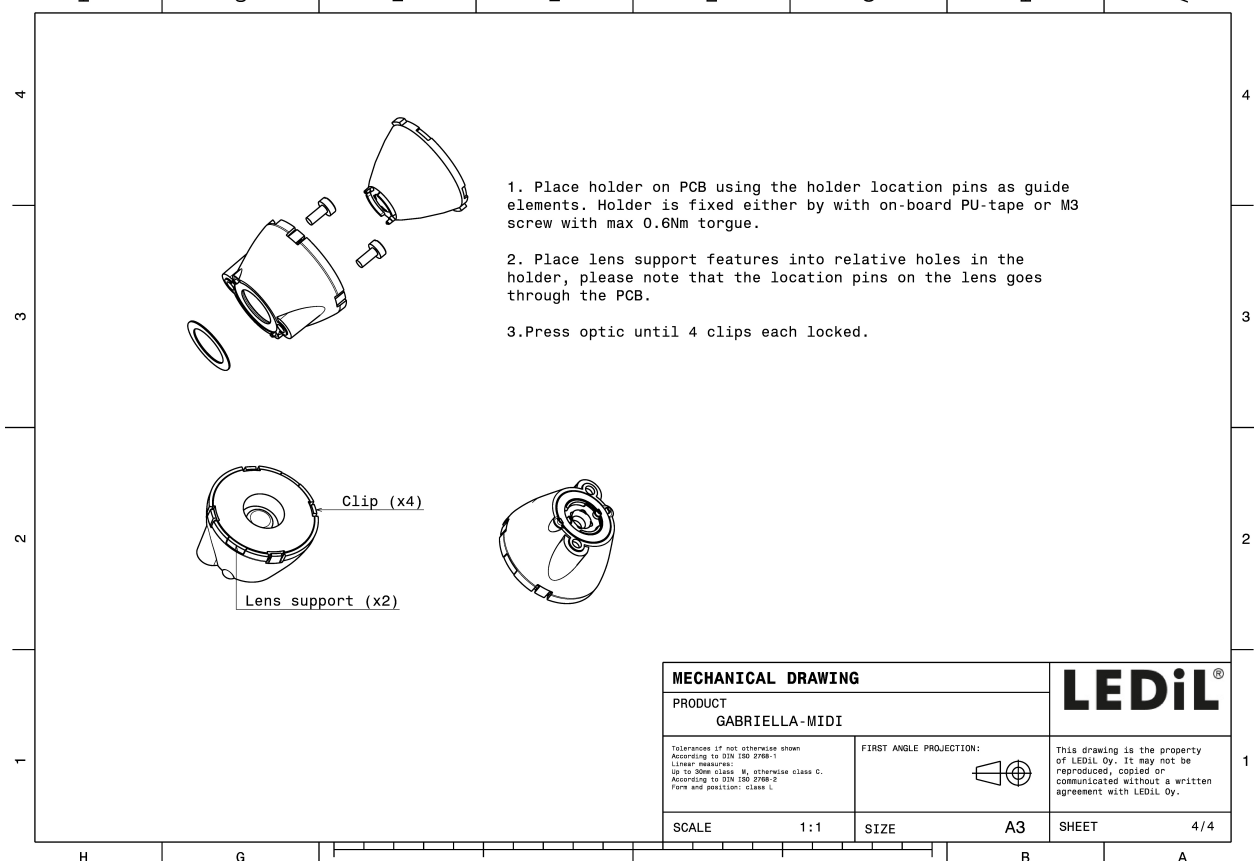
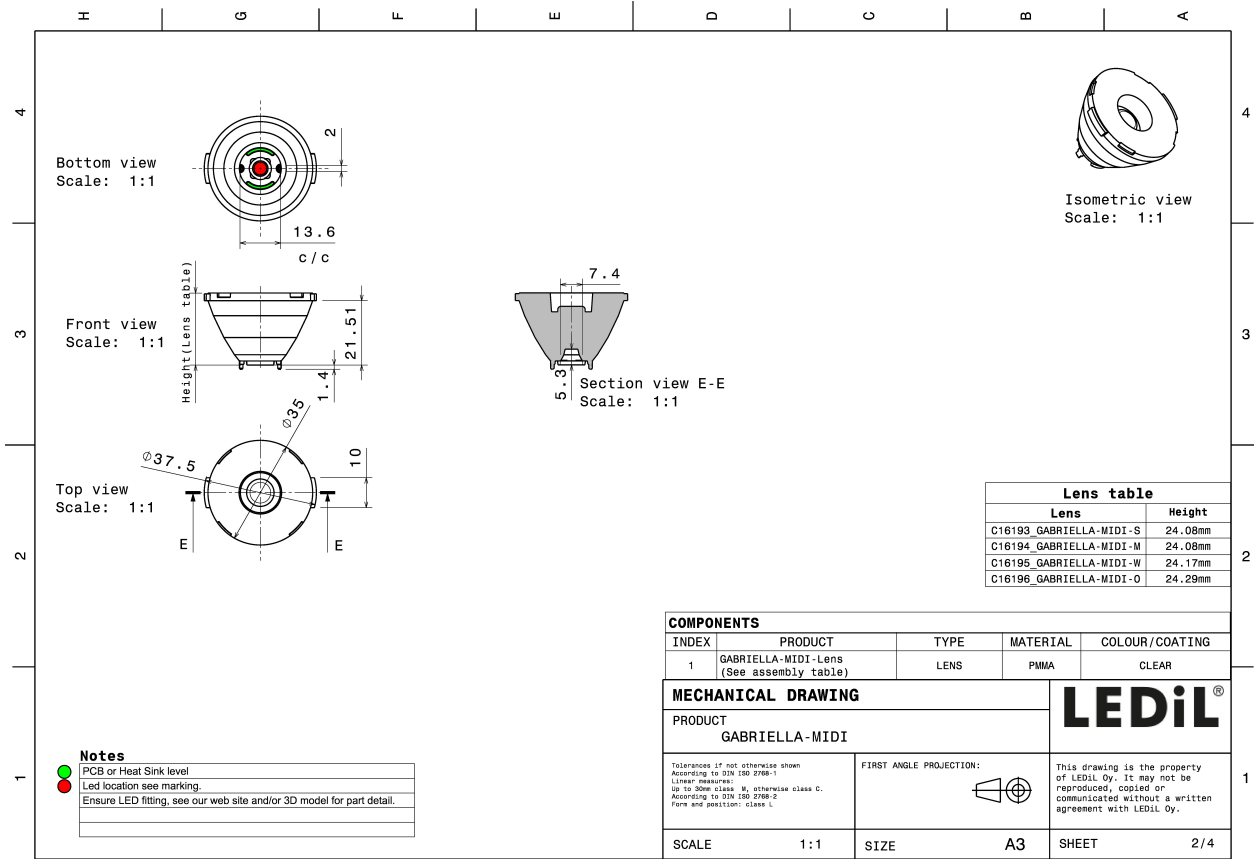
Component	Type	Material	Colour	Finish
GABRIELLA-MIDI-S	Single lens	PMMA	clear	
GABRIELLA-MIDI-HLD	Holder	PC	black	

ORDERING INFORMATION:

Component		Qty in box	MOQ	MPQ	Box weight (kg)
CN16208_GABRIELLA-MIDI-S	Single lens	500	100	50	0.0
» Box size:					



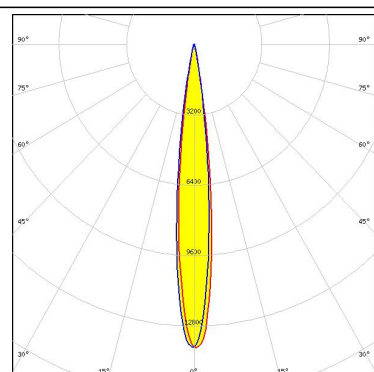
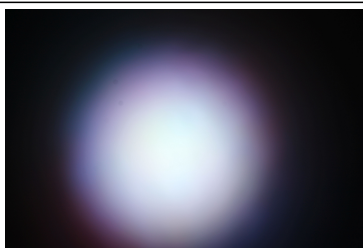




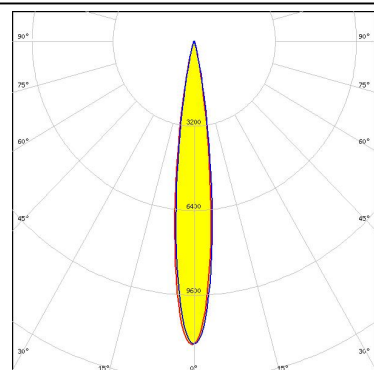
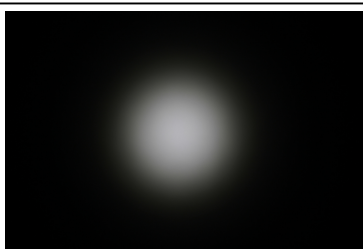
PHOTOMETRIC DATA (MEASURED):



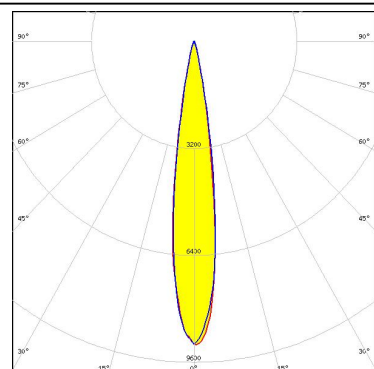
LED XQ-E HD
FWHM 13.0°
Efficiency 87 %
Peak intensity 13.8 cd/Im
LEDs/each optic 4
Light colour RGBW
Required components:



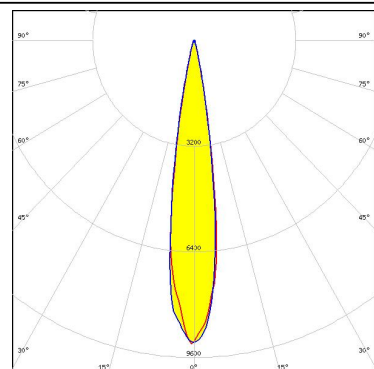
LED LUXEON 5050 Round LES
FWHM 14.0°
Efficiency 91 %
Peak intensity 11.5 cd/Im
LEDs/each optic 1
Light colour White
Required components:



LED LUXEON C
FWHM 16.0°
Efficiency 86 %
Peak intensity 9.1 cd/Im
LEDs/each optic 4
Light colour RGBW
Required components:



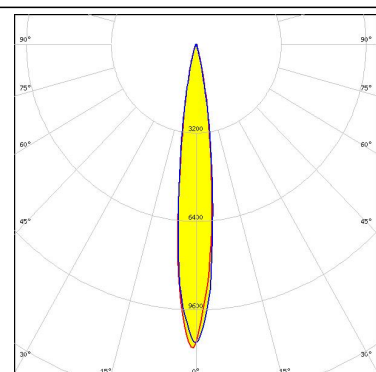
LED LUXEON CZ
FWHM 17.0°
Efficiency 89 %
Peak intensity 9.2 cd/Im
LEDs/each optic 4
Light colour RGBW
Required components:



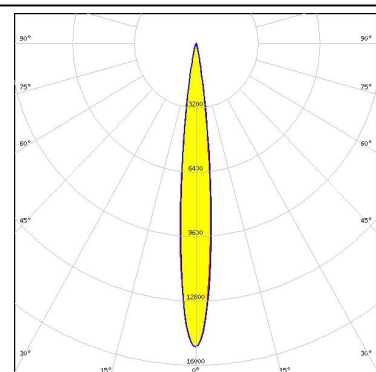
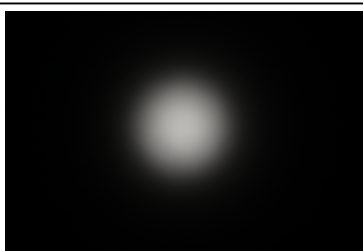
PHOTOMETRIC DATA (MEASURED):



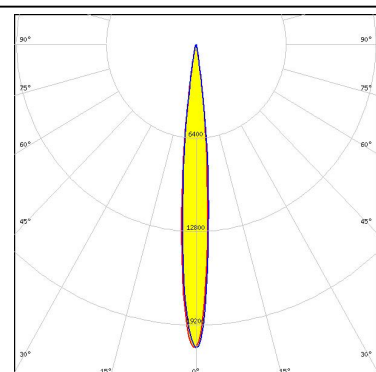
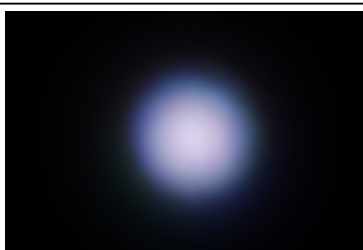
LED LUXEON MultiColor Module 2.5W
 FWHM 13.0°
 Efficiency 89 %
 Peak intensity 11 cd/lm
 LEDs/each optic 1
 Light colour RGBW
 Required components:



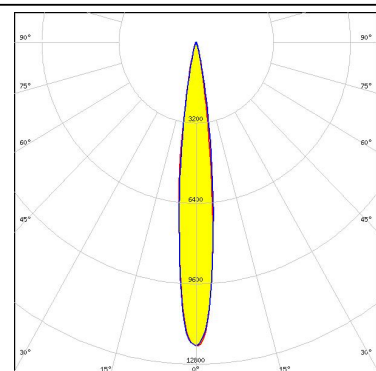
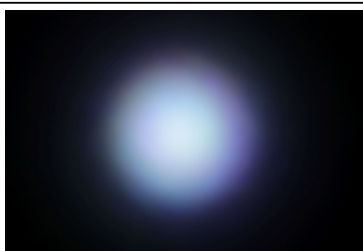
LED LUXEON V
 FWHM 12.0°
 Efficiency 89 %
 Peak intensity 15.1 cd/lm
 LEDs/each optic 1
 Light colour White
 Required components:



LED SBM-40-RGBW
 FWHM 10.0°
 Efficiency 89 %
 Peak intensity 21 cd/lm
 LEDs/each optic 1
 Light colour White
 Required components:



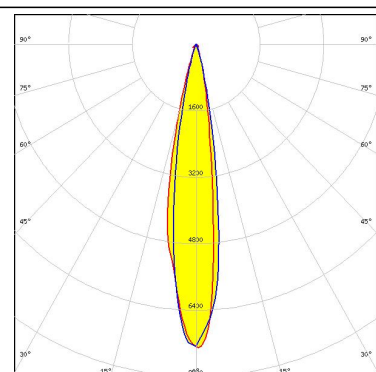
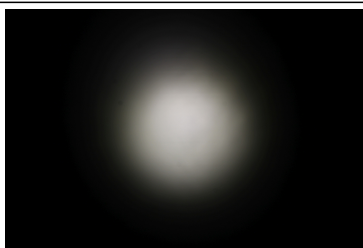
LED NCSxE17A
 FWHM 13.0°
 Efficiency 92 %
 Peak intensity 12 cd/lm
 LEDs/each optic 4
 Light colour RGBW
 Required components:



PHOTOMETRIC DATA (MEASURED):

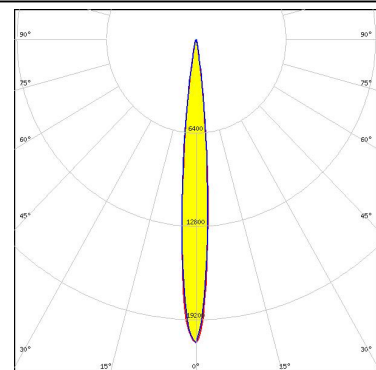
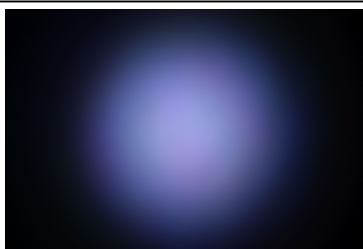


LED NVSW219F
FWHM 17.0°
Efficiency 87 %
Peak intensity 7.3 cd/lm
LEDs/each optic 1
Light colour White
Required components:



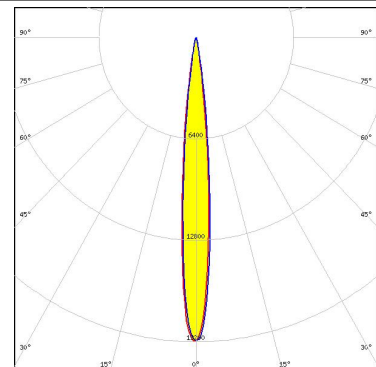
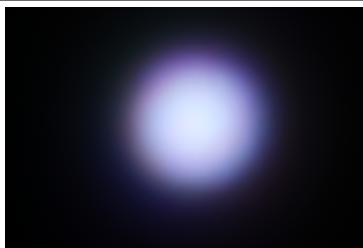
SEOUL SEMICONDUCTOR

LED SPF05F0A
FWHM 10.0°
Efficiency 89 %
Peak intensity 20.8 cd/lm
LEDs/each optic 4
Light colour RGBW
Required components:



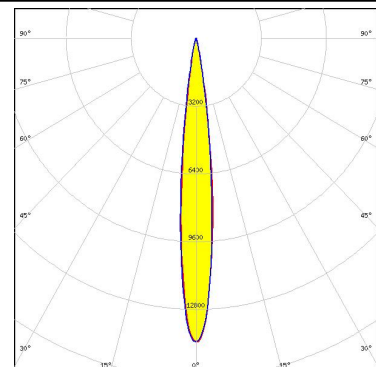
SEOUL SEMICONDUCTOR

LED SPF05F0B
FWHM 11.0°
Efficiency 90 %
Peak intensity 19.1 cd/lm
LEDs/each optic 4
Light colour RGBW
Required components:



SEOUL SEMICONDUCTOR

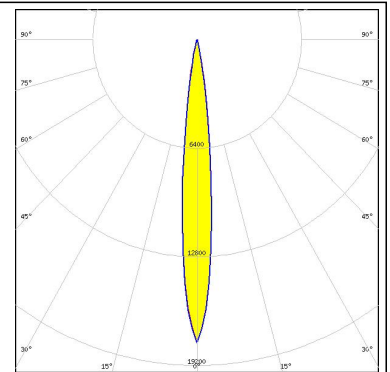
LED SPF05F0C
FWHM 12.0°
Efficiency 89 %
Peak intensity 14.3 cd/lm
LEDs/each optic 4
Light colour RGBW
Required components:



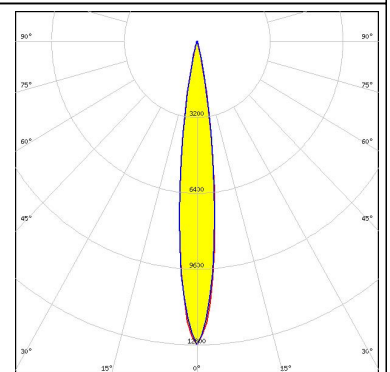
PHOTOMETRIC DATA (SIMULATED):



LED XP-G2 HE
 FWHM 12.0°
 Efficiency 92 %
 Peak intensity 17.9 cd/lm
 LEDs/each optic 1
 Light colour White
 Required components:



LED Duris S8
 FWHM 14.0°
 Efficiency 92 %
 Peak intensity 12.8 cd/lm
 LEDs/each optic 1
 Light colour White
 Required components:



GENERAL INFORMATION:

NOTE: The typical beam angle will be changed by different color, chip size and chip position tolerance. The typical total beam angle is the full angle measured where the luminous intensity is half of the peak value.

MATERIALS:

As part of our continuous research and improvement processes, and to ensure the best possible quality and availability of our products, LEDiL reserves the right to change material grades without notice.

PRODUCT DATA USER AGREEMENT AND DISCLAIMER:

The measured data in the provided downloadable LEDiL Product Datasheets and Mechanical 2D-Drawings is rounded and provided as reference for planning. LEDiL Oy's optical specifications have been verified by conducting performance testing of the products in accordance with the company's quality system. The reported data are averaged results of multiple measurements with typical variation. LEDiL Oy reserves the right to without prior notification make changes and improvements to its products.

LEDiL Oy assumes neither warranty, nor guarantee nor any other liability of any kind for the contents and correctness of the provided data. The provided data has been generated with highest diligence but the provided data may in reality not represent the complete possible variation range of all intrinsic parameters. Therefore, in certain cases a deviation from the provided data could occur.

LEDiL Oy reserves the right to undertake technical changes of its products without further notification which could lead to changes in the provided data. LEDiL Oy assumes no liability of any kind for the possible deviation from any provided data or any other damage resulting from the usage of the provided data.

The user agrees to this disclaimer and user agreement with the download or usage of the provided files.

LEDiL Oy

Joensuunkatu 13
FI-24240 SALO
Finland

LEDiL Inc.

228 West Page Street
Suite D
Sycamore IL 60178
USA

Local sales and technical support

[www.ledil.com/
where_to_buy](http://www.ledil.com/where_to_buy)

Shipping locations

Salu, Finland
Hong Kong, China

Distribution Partners

[www.ledil.com/
where_to_buy](http://www.ledil.com/where_to_buy)