



Plastic Gear 8T (4-Pack)

SKU: 83450 Weight: 4.00 Gram

What is Plastic Gear 8T?

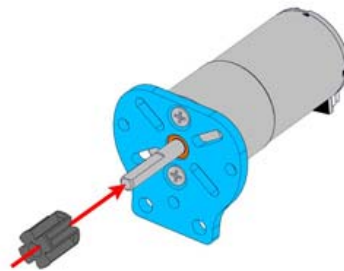
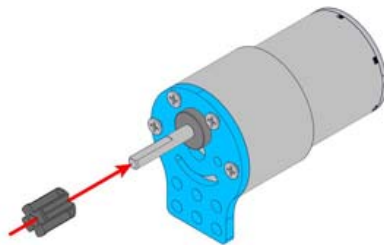
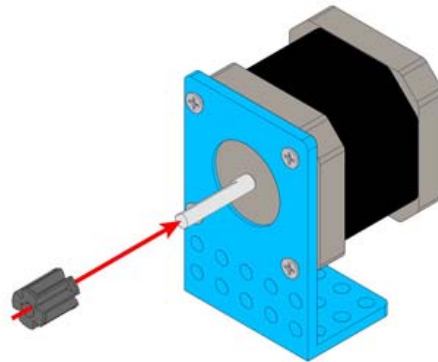
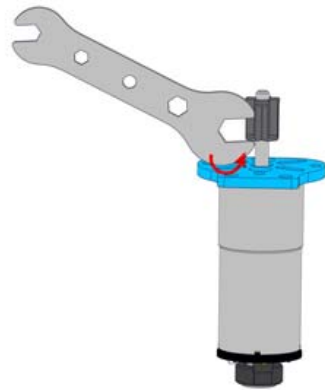
Plastic Gear 8T is a kind of gear drives. It usually works with motor shaft as a drive mechanism.

There is interference fit between Plastic Gear 8T and motor shaft, therefore the gear should be pressed into the motor shaft with effort while assembling, and has to be disassembled by nut wrench according to the building samples. If the gear has to bear great load and be connected with motor shaft tightly, you need to use glue such as 502 glue.

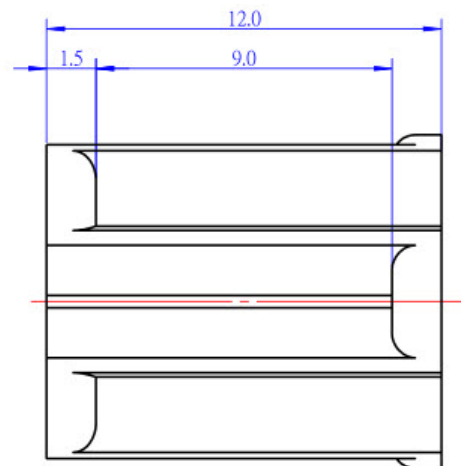
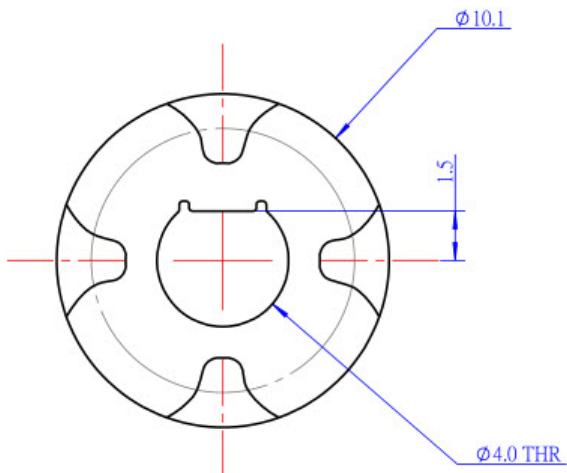
Features

- ? Number of teeth: 8T; Module: 1.0;
- ? Material: Nylon, light weight;
- ? Easy to assemble without screw to fix;
- ? Little fiction force, high efficiency of driving;
- ? Low noise.

Building Examples:



Schematic Diagram:



Specifications

SKU	83450
Material	Nylon
Color	Black
Package content	4 x Plastic Gear 8T
Dimension	160x90x15mm (6.3x3.5x0.6 inch)
Net Weight	3g (0.11oz)
Gross Weight	4g (0.14oz)



<https://store.makeblock.com/plastic-gear-8t-4-pack/2-25-19>