



100mm Omni Wheel

SKU: 87080 Weight: 410.40 Gram

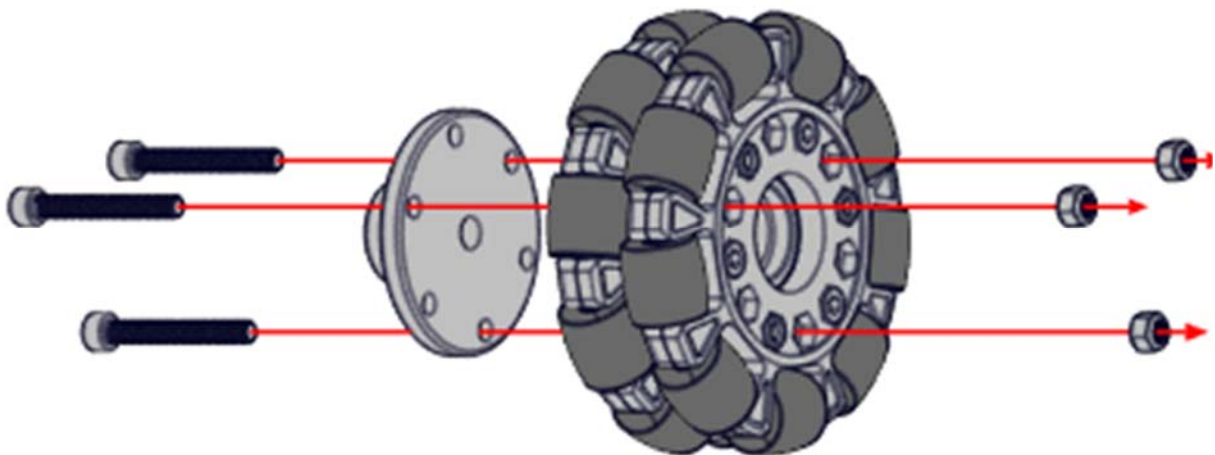
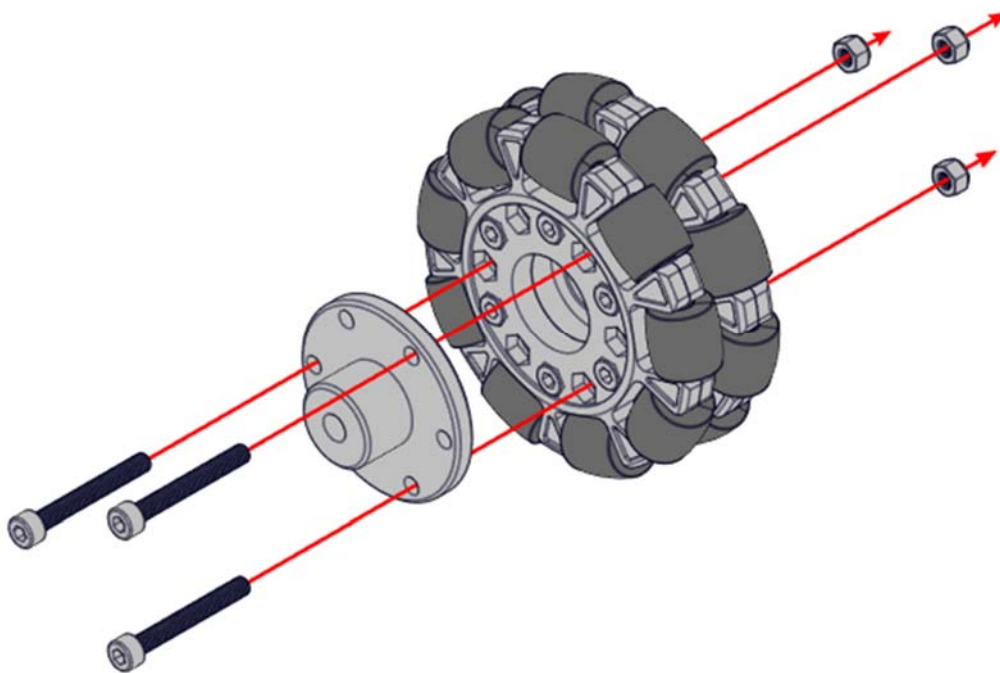
What Is 100mm Omni Wheel?

It is made of omni-directional copper wheel and cots. A omni-directional chassis can be composed by several wheels with connecting a 36 high power coder motor.

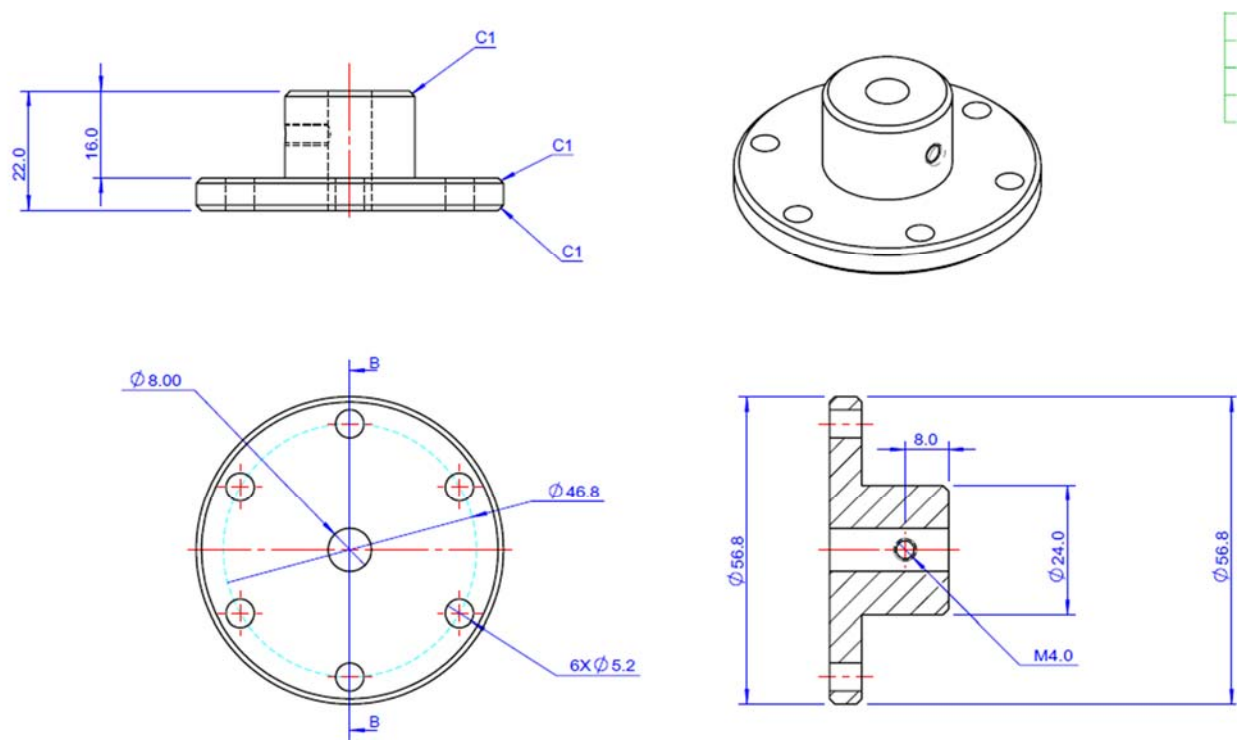
Features

- Body Material: PC and glass-fiber
- Wheel Material: Rubber
- Coupling Material: 6061 aluminum alloy
- Number of Disc: 2
- Number of Cots: 8
- Diameter: 100 mm;
- Pinion Diameter: 19mm
- Load Capacity: 20KG

DEMO



Size Charts



Specifications	
SKU	87080
Product Name	100mm Omni Wheel
Length	φ100mm
Cross-section Area	φ100X57.4 mm
Gross Weight	410.4g (14.48oz)
Package Content (Quantity x Part Name)	1 x 100mm Omni Wheel, 1 x 100mm Omni Wheel Shaft Coupling, 3 x Cuphead Screw M5*40, 3 x Lock Nut M5



https://store.makeblock.com/index.php?route=product/product&product_id=6862/2-8-19