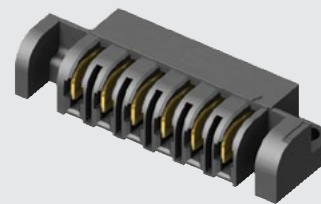


FMPT-06-01-L-S-V



FMPS-06-01-L-S-RA-SD

(5.00 mm) .1969"

FMPS, FMPT SERIES

"HINGING" 30 A POWER HEADER & SOCKET

SPECIFICATIONS

For complete specifications see www.samtec.com?FMPS or www.samtec.com?FMPT

Insulator Material:

Black LCP

Terminal Material:

Copper Alloy

Plating: Sn or Au over

50 μ" (1.27 μm) Ni

Operating Temp Range:

-55 °C to +105 °C with Tin;

-55 °C to +125 °C with Gold

Voltage Rating:

525 VAC/742 VDC

Standard Creepage:

FMPS: (3.67 mm) .144"

FMPT: (6.53 mm) .257"

Standard Clearance:

(2.71 mm) .106"

RoHS Compliant: Yes

Lead-Free Solderable: Yes

FMPT/FMPS	
PINS	CURRENT RATING (PER CONTACT)
1	26.7 A
2	22.9 A
3	19.1 A
4	17.6 A
8	15.8 A
-L PLATING	

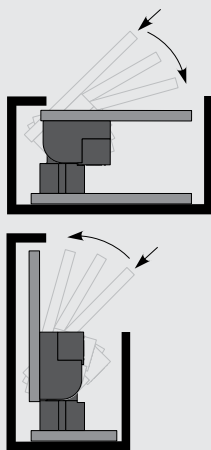
RECOGNITIONS

For complete scope of recognitions see www.samtec.com/quality



FILE NO. E111594

APPLICATION



Ideal for blind mating applications.

Note:
Some sizes, styles and options are non-standard, non-returnable.

FMPS

NO. OF POSITIONS

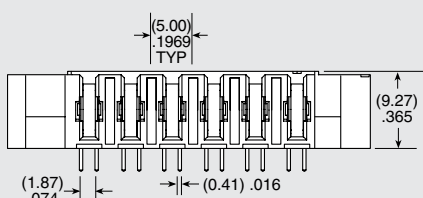
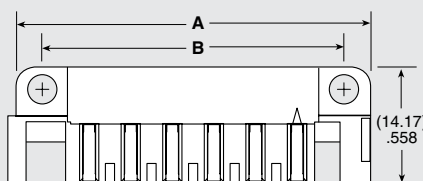
01

PLATING OPTION

S

RA

OPTION

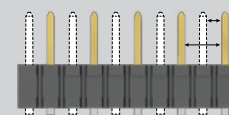
02, 04, 06, 08
(Standard sizes)-SD OPTION
(6 POSITIONS SHOWN)ALSO AVAILABLE
(MOQ Required)

- Other sizes
- Contact Samtec.

-L
= 10 μ" (0.25 μm) Gold on contact,
Matte Tin on tail-T
= Matte Tin-SD
= Screw Down
(Not Available with -LC)-LC
= Locking Clip
(Manual placement
required)
(Not Available with -SD)

NUMBER OF POSITIONS	A	B	C
-02	(22.63) .891	(16.28) .641	(15.63) .615
-04	(32.63) 1.285	(26.28) 1.035	(25.63) 1.009
-06	(42.63) 1.678	(36.28) 1.428	(35.63) 1.403
-08	(52.63) 2.072	(46.28) 1.822	(45.63) 1.796

CREEPAGE AND CLEARANCE



Selectively loading contacts achieves customer specific creepage and clearance requirements.
Contact asp@samtec.com

FMPT

NO. OF POSITIONS

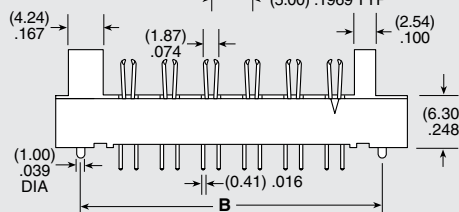
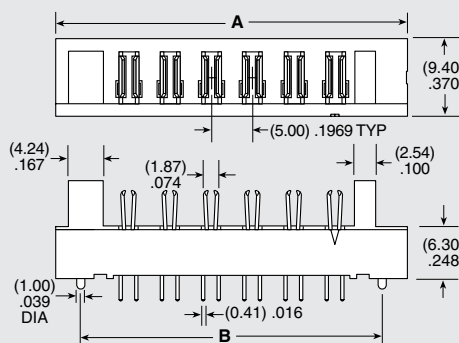
01

PLATING OPTION

S

V

OPTION

02, 04, 06, 08
(Standard sizes)-L
= 10 μ" (0.25 μm) Gold on contact,
Matte Tin on tail-T
= Matte Tin-LC
= Locking Clip
(Manual placement
required)

NUMBER OF POSITIONS	A	B
-02	(22.63) .891	(16.53) .651
-04	(32.63) 1.285	(26.53) 1.044
-06	(42.63) 1.678	(36.53) 1.438
-08	(52.63) 2.072	(46.53) 1.832

Due to technical progress, all designs, specifications and components are subject to change without notice.

WWW.SAMTEC.COM

All parts within this catalog are built to Samtec's specifications.
Customer specific requirements must be approved by Samtec and identified in a Samtec customer-specific drawing to apply.