

(1.27 mm) .050"

SEAF-20-01-L-04-2-RA-GP-TR

SEAF-20-01-L-06-2-RA-GP-TR

SEAF-RA SERIES

HI-DENSITY RIGHT-ANGLE OPEN-PIN-FIELD

SPECIFICATIONS

For complete specifications and recommended PCB layouts see www.samtec.com?SEAF-RA

Insulator Material:

Black LCP

Contact Material:

Copper Alloy

Current Rating:

1.9 A per pin

(10 pins powered)

Operating Temp Range:

-55 °C to +125 °C

Plating:

Au or Sn over

50 μ" (1.27 μm) Ni

Working Voltage:

280 VAC

Mated Cycles:

100

RoHS Compliant:

Yes

Lead-Free Solderable:

Yes

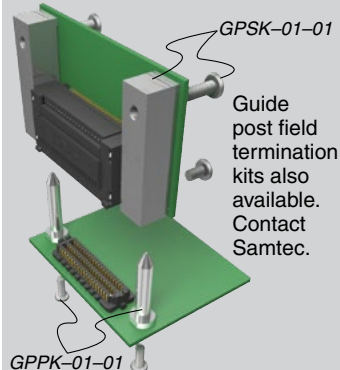
Board Mates:

SEAM, SEAMP

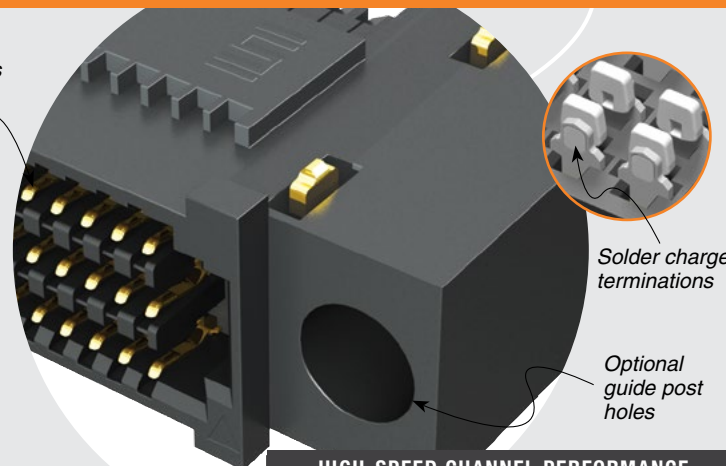
Cable Mates:

SEAC

OTHER SOLUTIONS



Up to
500 pins



Low insertion/
extraction forces

HIGH-SPEED CHANNEL PERFORMANCE

SEAF-RA/SEAM-RA

Rating based on Samtec reference channel.
For full SI performance data visit Samtec.com
or contact SIG@samtec.com

25
Gbps

RECOGNITIONS

For complete scope of recognitions see www.samtec.com/quality



FILE NO. E111594

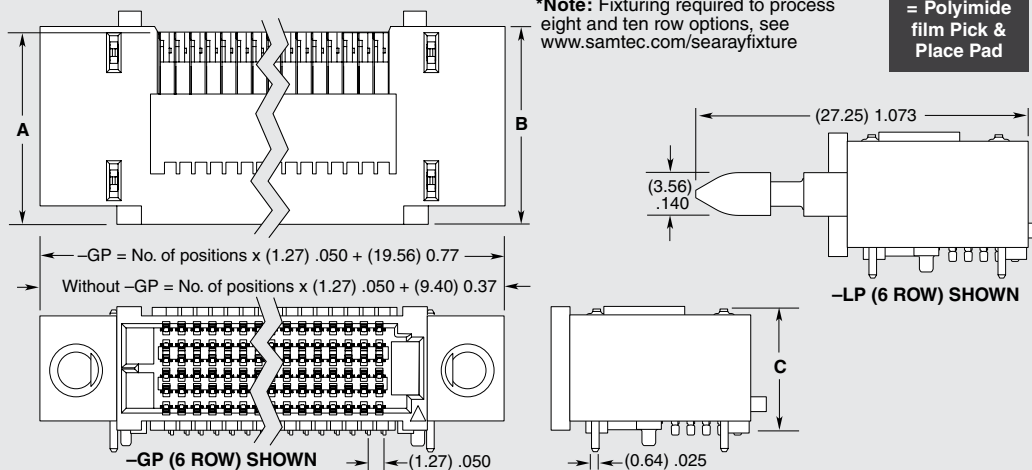
SEAF	NO. PINS PER ROW	01	PLATING OPTION	NO. OF ROWS	SOLDER TYPE	RA	OPTION	TR
	-20, -30, -40, -50		-L = 10 μ" (0.25 μm) Gold on contact area, Matte Tin on solder tail	-04 = Four Rows -06 = Six Rows -08* = Eight Rows -10* = Ten Rows	-1 = Tin/Lead Alloy Solder Charge -2 = Lead-Free Solder Charge		-GP = Guide Post Hole -LP = Latch Post (06 row 30 positions only) (Mates to SEAC Series) -K = Polyimide film Pick & Place Pad	-TR = Tape & Reel

NO. OF ROWS	A	B	C
-04	(13.26) .522	(13.77) .542	(7.91) .311
-06	(15.80) .622	(16.31) .642	(10.45) .411
-08	(18.34) .722	(18.85) .742	(12.99) .511
-10	(20.88) .822	(21.39) .842	(15.53) .611

ALSO AVAILABLE (MOQ Required)

- Other platings
- Contact Samtec.

Note:
Some sizes, styles and options are non-standard, non-returnable.



*Note: Fixturing required to process eight and ten row options, see www.samtec.com/searayfixture

Due to technical progress, all designs, specifications and components are subject to change without notice.

WWW.SAMTEC.COM

All parts within this catalog are built to Samtec's specifications.
Customer specific requirements must be approved by Samtec and identified in a Samtec customer-specific drawing to apply.