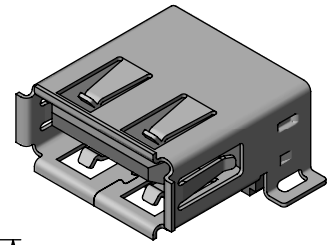
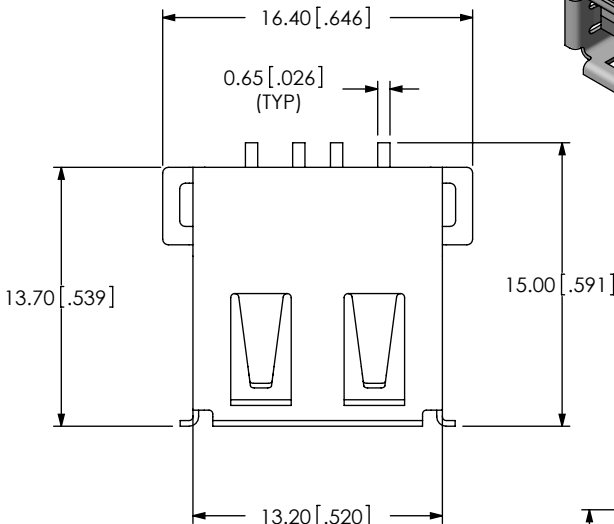


REVISION S

DO NOT
SCALE FROM
THIS PRINT



USB-A-S-X-X-SM2-X-XX

TYPE
-A

CONFIGURATION
-S: SINGLE

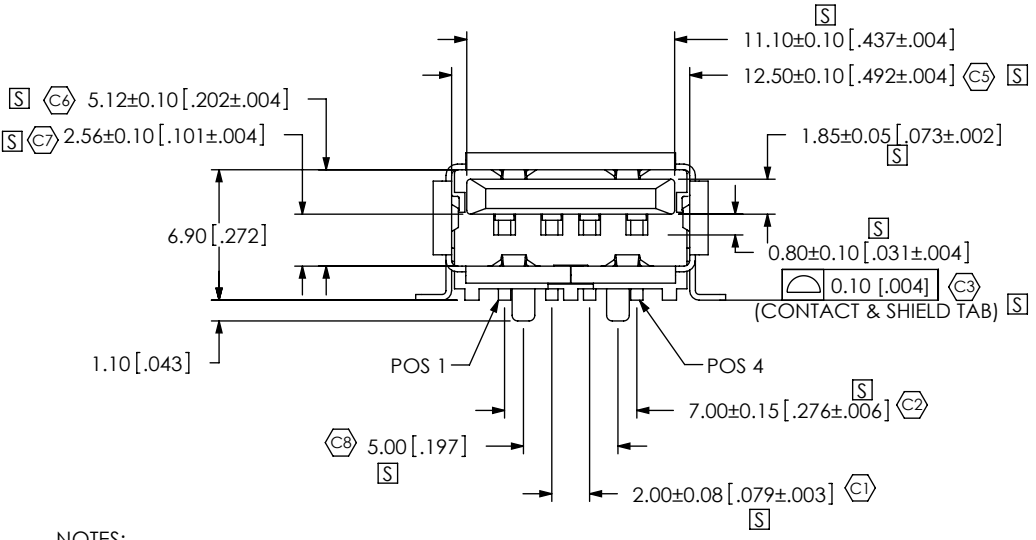
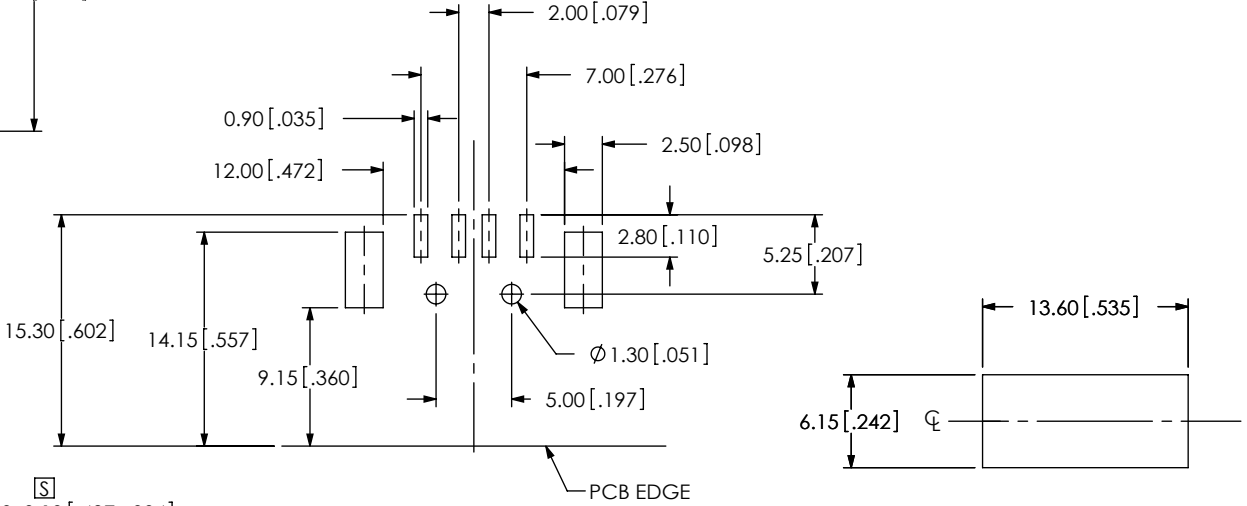
PLATING SPECIFICATION
-F: GOLD FLASH ON MATING AREA,
MATTE TIN ON TAIL
-S: SELECTIVE, .000030 GOLD ON MATING AREA,
MATTE TIN ON TAIL

T&R OPTION
-TR: TAPE AND REEL (LEAVE BLANK
FOR TRAY PACKAGING)

COMPLIANCE
-R: ROHS COMPLIANT
(SEE NOTE 5)

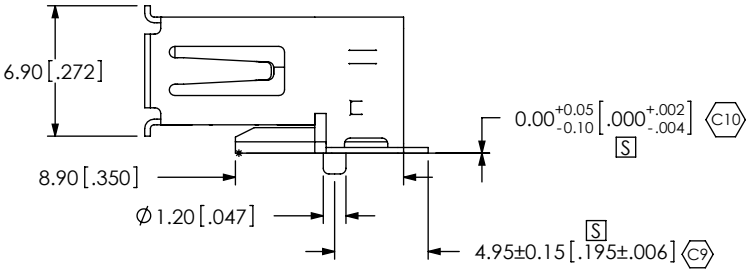
TERMINATION
-SM2: SURFACE MOUNT 2

COLOR
-B: BLACK
-W: WHITE



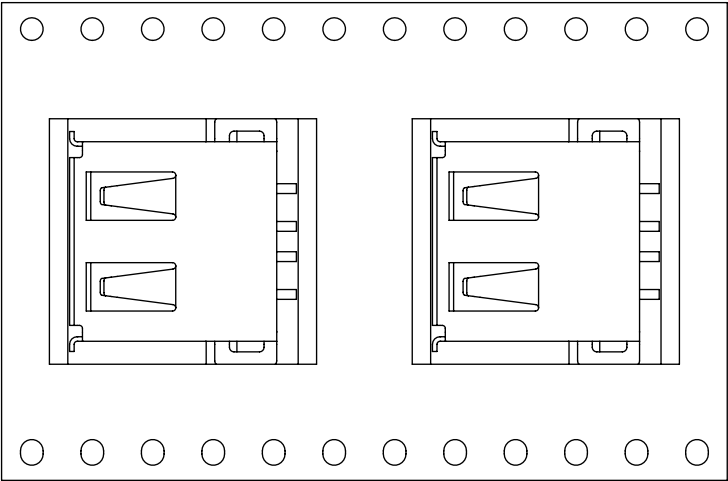
RECOMMENDED PCB LAYOUT

SUGGESTED PANEL CUTOUT DIMENSIONS

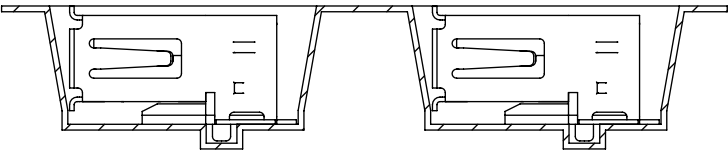


- NOTES:
1. Ⓢ REPRESENTS CRITICAL DIMENSION.
 2. DELETED.
 3. DELETED.
 4. PARTS TO BE PACKAGED IN TRAYS.
 5. ALL PARTS ROHS COMPLIANT WITH OR WITHOUT -R.


UNLESS OTHERWISE SPECIFIED, DIMENSIONS ARE IN MILLIMETERS. TOLERANCES ARE: DECIMALS ANGLES X.X: ±0.3 [.01] 2° X.XX: ±0.13 [.005] X.XXX: ±0.051 [.0020]		PROPRIETARY NOTE THIS DOCUMENT CONTAINS INFORMATION CONFIDENTIAL AND PROPRIETARY TO SAMTEC, INC. AND SHALL NOT BE REPRODUCED OR TRANSFERRED TO OTHER DOCUMENTS OR DISCLOSED TO OTHERS OR USED FOR ANY PURPOSE OTHER THAN THAT WHICH IT WAS OBTAINED WITHOUT THE EXPRESSED WRITTEN CONSENT OF SAMTEC, INC.	
MATERIAL: DO NOT SCALE DRAWING SHEET SCALE: 2:1		DESCRIPTION: USB A, SINGLE, SURFACE MOUNT 2	
HOUSING: HI-TEMP NYLON UL 94V-0 CONTACT: COPPER ALLOY SHELL: COPPER ALLOY		DWG. NO. USB-A-S-X-X-SM2-X-XX	
BY: B.HARPENAU 2/24/2006		SHEET 1 OF 2	



USER DIRECTION OF UN-REELING →
POCKET NOT DETAILED



-TR: TAPE & REEL

<p>PROPRIETARY NOTE</p> <p>THIS DOCUMENT CONTAINS INFORMATION CONFIDENTIAL AND PROPRIETARY TO SAMTEC, INC. AND SHALL NOT BE REPRODUCED OR TRANSFERRED TO OTHER DOCUMENTS OR DISCLOSED TO OTHERS OR USED FOR ANY PURPOSE OTHER THAN THAT WHICH IT WAS OBTAINED WITHOUT THE EXPRESSED WRITTEN CONSENT OF SAMTEC, INC.</p> <p>DO NOT SCALE DRAWING</p> <p>SHEET SCALE: 1:1</p>	 <p>520 PARK EAST BLVD, NEW ALBANY, IN 47150 PHONE: 812-944-6733 FAX: 812-948-5047 e-Mail: info@SAMTEC.com code: 55322</p>	
	DESCRIPTION:	USB A, SINGLE, SURFACE MOUNT 2
	DWG. NO.	USB-A-S-X-X-SM2-X-XX
	BY: B.HARPENAU 2/24/2006	SHEET 2 OF 2