

4

3

2

1

THIS DRAWING IS UNPUBLISHED.

RELEASED FOR PUBLICATION

© COPYRIGHT

ALL RIGHTS RESERVED.

LOC

DIST


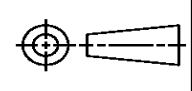
REVISIONS

P	LTR	DESCRIPTION	DATE	DWN	APVD
	H1	ECR-16-009824	26JUL2016	GK	SD

REPLACED BY OCEAN STYLE APPLICATOR PART
NUMBER 2150117-2

FOR REPLACEMENT PARTS FOR APPLICATOR 466627
REFER TO ADDITIONAL PAGE(S). SPARE PARTS KIT (IF LISTED)
WILL REMAIN AVAILABLE.

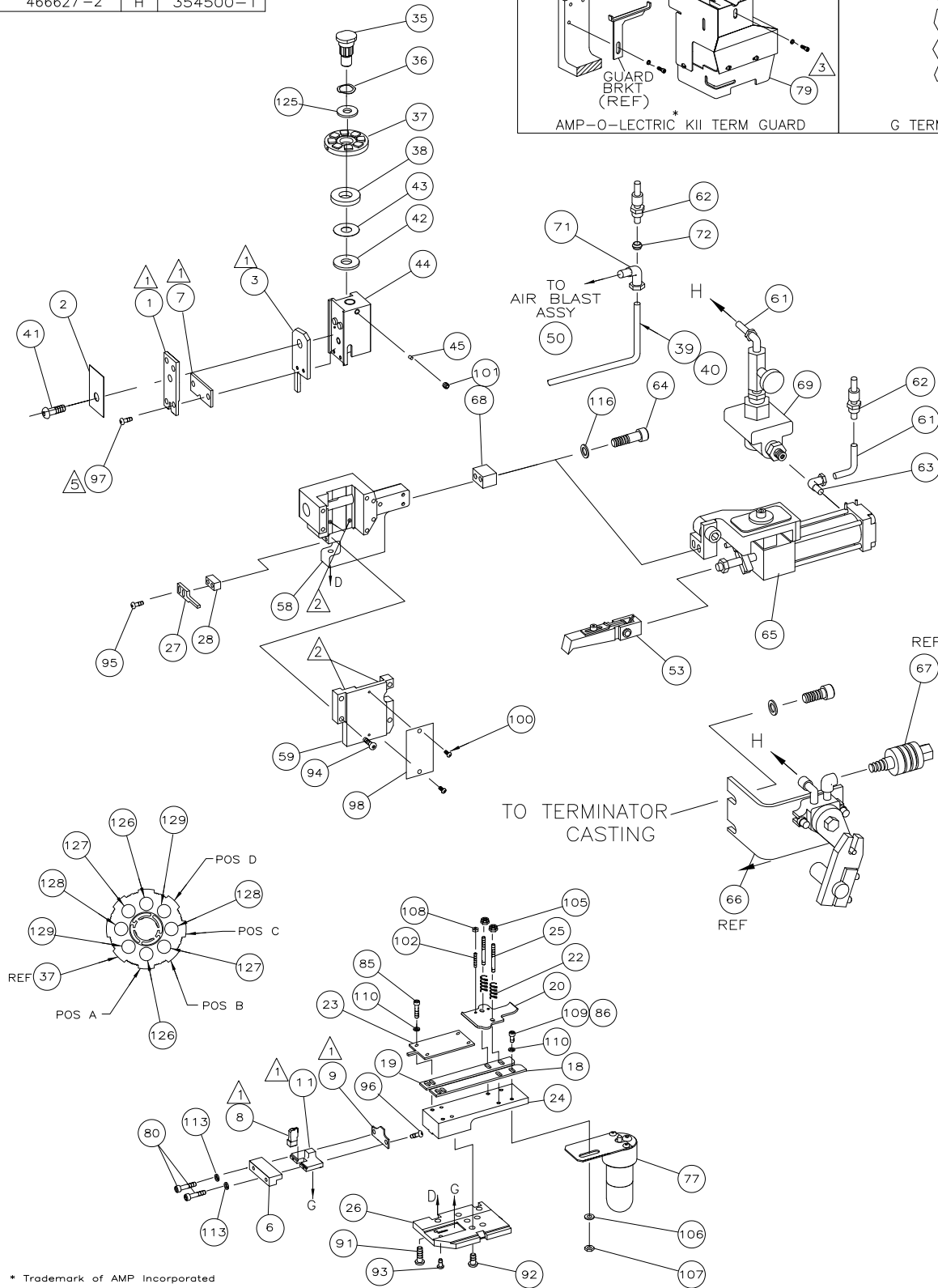
THE REPLACEMENT OCEAN STYLE APPLICATOR HAS THE
SAME TERMINATOR/PRESS INTERFACE AS APPLICATOR
466627

THIS DRAWING IS A CONTROLLED DOCUMENT.		DWN	GOPALAKRISHNA HV		 TE Connectivity			
		CHK	GOPALAKRISHNA HV					
DIMENSIONS:		TOLERANCES UNLESS OTHERWISE SPECIFIED:		APVD	NAME			
		0 PLC ± 1 PLC ± 2 PLC ± 3 PLC ± 4 PLC ± ANGLES ±		STOUGH DALE		END FEED APPLICATOR		
				PRODUCT SPEC				
				APPLICATION SPEC				
MATERIAL		FINISH		WEIGHT	SIZE	CAGE CODE	DRAWING NO	RESTRICTED TO
					A 3		©- 466627	
				CUSTOMER ACCESSIBLE PRODUCTION DRAWING		SCALE	SHEET 1 OF 2	REV H1

THIS DRAWING IS A CONTROLLED DOCUMENT.

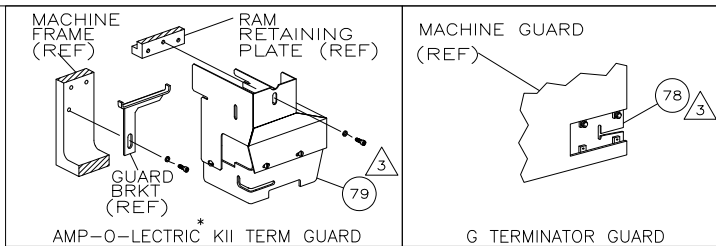
THIS INFORMATION IS CONFIDENTIAL AND PROPRIETARY TO TYCO ELECTRONICS CORPORATION AND ITS WORLDWIDE SUBSIDIARIES AND AFFILIATES. IT MAY NOT BE DISCLOSED TO ANYONE, OTHER THAN TYCO ELECTRONICS PERSONNEL, WITHOUT WRITTEN AUTHORIZATION FROM TYCO ELECTRONICS CORPORATION, HARRISBURG, PENNSYLVANIA, USA.

PART NUMBER	REV	FIRST USED
466627-1	H	565435-5
466627-2	H	354500-1



* Trademark of AMP Incorporated

- 1 RECOMMENDED SPARE PARTS.
2 GREASE LIGHTLY.
3 GUARD MUST BE IN PLACE WHEN OPERATING APPLICATOR IN BENCH MACHINE.
4 SEE DRAWING FOR COMPONENTS
5 SET-UP WIRE
PAD A #18 STRANDED & #20 MAGNET.
PAD B #20 STRANDED & #21 MAGNET.
PAD C #22 STRANDED & #24 MAGNET.



TERMINAL NAME:	AMPLIVAR™ SPLICE
	62305
TERM	APPL SPEC 114-2003

CRIMPING DATA			
PAD LTR	CRIMP HEIGHT	WIRE SIZE	
A	.057±.002[1.45±0.05mm]	2400-3000	
B	.052±.002[1.32±0.05mm]	1400-2200	
C	.047±.002[1.19±0.05mm]	600-1200	
D	NOT	USED	
CRIMP	SIZE	TYPE	RANGE
WIRE	.110 [2.79mm]	F	600-3000
INSUL	-	-	-
FEED	.315	APPL INST 408-8039	SET UP GAGE LAYOUT L1597
WIRE STRIP LENGTH	.279-.341		

2	2	-	6-354779-2	PIN, WIRE DISC (.3300)C	129
2	2	-	5-354779-2	PIN, WIRE DISC (.3250)B	128
2	2	-	4-354779-2	PIN, WIRE DISC (.3200)A	126
1	1	-	986950-1	WASHER, FLAT PRECISION	125
1	1	-	217238-1	GENERAL INSTRUCTION PACKAGE	124
1	1	-	4088039	EF APPL INST 408-8039	123
					122
					121
					120
					119
					118
					117
2	2	-	21024-5	WASHER,LOCK(NO.10)	116
					115
					114
2	2	-	21024-3	WASHER,LOCK(NO.6)RET PL	113
					112
					111
6	6	-	21024-4	WASHER,LOCK(NO.8)SHEAR BL	110
1	1	-	2-21000-9	SCR,SHC(8-32x.75)ST GUIDE	109
2	2	-	21018-4	NUT,HEX(4-40)DRAG	108
1	1	-	21018-6	NUT,HEX(8-32)LUBRICATOR	107
1	1	-	21055-6	WASHER,FLAT(NO.8)LUBE	106
2	2	-	21022-2	NUT,HEX SL(8-32)DRAG STUD	105
					104
					103
2	2	-	4-21078-8	SKT SKT SET (4-40x.75)DRAG	102
1	1	-	21009-2	SCR,SKT SET(1/4-20x.25)RAM	101
2	2	-	1-21002-3	SCR,BHC(4-40x.25)ID PLATE	100
					99
1	1	-	464249-1	PLATE, IDENTIFICATION	98
2	2	-	2-21002-8	SCR,BHC(10-32x.63)RAM	97
2	2	-	1-21002-6	SCR,BHC(6-32x.25)GUIDE PLATE	96
2	2	-	8-21002-9	SCR,BHC(8-32x1.00)STRIPPER	95
4	4	-	2-21002-9	SCR,BHC(10-32x.75)CAP	94
2	2	-	2-22733-0	SCR,BHC(10-32x.38 LW)ANVIL	93
4	4	-	3-21002-3	SCR,BHC(1/4-20x.50)ST GD PL	92
3	3	-	2-22733-8	SCR,BHC(1/4-20x.62)HSG	91
					90
					89
					88
					87
1	1	-	2-21000-6	SCR,SHC(8-32x.38)STRIP GUIDE	86
4	4	-	2-21002-2	SCR,BHC(8-32x.50)STRIP GUIDE	85
					84
					83
					82
					81
2	2	-	1-21000-9	SCR,SKT CAP(6-32x.38)PLATE RET	80
-	1	-	460980-2	GUARD ASSY	79
-	-	-	679532-1	INSERT, GUARD	78
-	1	-	1-465184-7	LUBRICATOR ASSY	77
					76
					75
					74
					73
-	1	-	992638-1	SLEEVE,BRASS	72
-	1	-	22317-3	ELBOW, COPPER TUBE	71
-2	-1	U/M	PART NO	DESCRIPTION	ITEM NO
QTY REQD	PER ASSY				

USED ON					
-1	BENCH MODEL K	AIRFEED			
-2	BENCH MODEL G	AIRFEED			
4	-	1	-	692655-5	AIR FEED VALVE ASSY
1	1	-	-	461690-1	SPACER, AIR FEED
-	REF	-	-	24042-2	VALVE, SHUT OFF
-	REF	-	-	692655-6	AIR FEED VALVE ASSY
1	1	-	-	460277-1	AIR FEED ASSY
2	2	-	-	4-21000-3	SCR,SHC 10-32x2.00 AIR ASSY
1	-	-	-	22294-6	ELBOW, TUBING 1/8NPT - 1/4 T
1	-	-	-	23238-1	QUICK DISCONNECT
12.00	12.00	IN	-	27319-4	TUBING, POLY-FLO Ø.25
					60
1	1	-	-	462926-1	CAP, RAM
1	1	-	-	453736-1	HOUSING
					57
					56
					55
					54
4	1	1	-	460680-7	FEED FINGER ASSY
					53
					52
					51
-	1	-	-	455350-1	AIR BLAST ASSY
					49
					48
					47
					46
1	1	-	-	690191-1	PLUG, NYLON
1	1	-	-	459586-1	RAM
1	1	-	-	690125-1	WASHER, LAMINATED
1	1	-	-	690124-1	WASHER, RAM
1	1	-	-	7-21002-9	BOLT, CRIMPER(5/16-24x1.00)
1	-	-	-	318848-1	AIR BLAST ASSY
1	1	-	-	689446-2	TUBE, AIR BLAST
1	1	-	-	690223-2	DISC, SPACER
1	1	-	-	354777-1	WIRE DISC, PLASTIC
1	1	-	-	22480-5	WASHER, SPRING
1	1	-	-	690212-1	POST, RAM
					35
					34
					33
					32
					31
					30
					29
1	1	-	-	3-690451-9	SPACER, STRIPPER
1	1	-	-	460276-1	STRIPPER
1	1	-	-	459584-1	PLATE, BASE
2	2	-	-	22354-8	DRAG, STUD
1	1	-	-	462931-1	PLATE, STRIP GUIDE
1	1	-	-	462932-1	PLATE, STRIP HOLD
2	2	-	-	4-22281-1	SPRING, DRAG
					22
					21
1	1	-	-	462925-1	DRAG, STOCK
1	1	-	-	462929-3	GUIDE, STRIP (REAR)
1	1	-	-	462930-3	GUIDE, STRIP (FRONT)
					17
					16
					15
					14
					13
					12
1	1	-	-	459583-3	BODY, ANVIL
					11
					10
1	1	-	-	459684-3	PLATE GUIDE, RETAINING
1	1	-	-	459582-4	ANVIL
1	1	-	-	459581-1	BLADE, SLUG
1	1	-	-	459580-1	PLATE, RET
					6
					5
					4
1	1	-	-	459587-1	GUIDE, CRIMPER
					3
					2
1	1	-	-	459585-1	CRIMPER, WIRE
					1
-2	-1	U/M	PART NO	DESCRIPTION	ITEM NO
QTY REQD	PER ASSY				

PARTS LIST					
QTY REQD	PER ASSY				
DIMENSIONS:					
INCHES					
TOLERANCES UNLESS OTHERWISE SPECIFIED:					
0	PLC	± .005			
1	PLC	± .005			
2	PLC	± .005			
3	PLC	± .005			
4	PLC	± .005			
END FEED APPLICATOR					
SCALE: SIZE: DRAWING NO: 466627 SHEET 1 OF 1 REV H					
REVISION RECORD					
H	ECR-10-002922	2-2010	MY	TE	
P	LTR				