

1432787-1 Product Details

Detailed product features are not currently available online.

Product features can often be found by referring to the available documents. [Contact us](#) for information about this product.

No Image Available

MINI-ISO,PI,12V,FORM C,AgSnO,R

 Always EU RoHS/ELV Compliant (Statement of Compliance)

1432787-1

TE Internal Number: 1432787-1

 Active

Documentation & Additional Information

Product Drawings:

- [CUSTOMER DRAWING](#) (PDF, English)

Catalog Pages/Data Sheets:

- None Available

Product Specifications:

- None Available

Application Specifications:

- None Available

Instruction Sheets:

- None Available

CAD Files:

- None Available

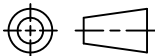
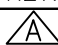

Related Products:

- [Tooling](#)



CUSTOMER DATA

PART NO. 1432787-1 SHT. 1 OF 2

DRAWN E.SIMPSON	APPROVAL B. TOEPFER	DATE 05-26-05	SCALE 1:1	CUSTOMER TYCO_ELECTRONICS_STANDARD				
TOLERANCE 0.X = +/- UNLESS 0.XX = +/- SPECIFIED 0.XXX = +/- OTHERWISE ANGLES = +/-				 DO NOT SCALE THIS DRAWING	CHANGES			
					REV.	DATE	CO	APP.
						08-19-05	RELEASE EDS	B.T.
						27APR2010	ECR-10-008018	BT

ELECTRICAL CHARACTERISTICS: (ALL DATA APPLIES @ 23°C UNLESS OTHERWISE SPECIFIED)

COIL DATA:

NOMINAL VOLTAGE: 12 VDC
OPERATE VOLTAGE: 7.8 VDC MAXIMUM
RELEASE VOLTAGE: 1.2 VDC MINIMUM
COIL RESISTANCE: 79.5 OHMS +/- 10%
OPERATE TIME: 10 mSEC. MAXIMUM EXCLUDING BOUNCE
RELEASE TIME: 13 mSEC. MAXIMUM EXCLUDING BOUNCE
TEMPERATURE RANGE: OPERATING -40°C TO +85°C

CONTACT DATA: (CONTACT DATA IS FORMATTED N.O./N.C.)

CONTACT ARRANGEMENT: 1 FORM C (SPDT)
CONTACT MATERIAL: AgSnO (SILVER TIN-OXIDE)
CONTACT MILLIVOLT DROP: 200mv @ 35A ON N.O. CONTACTS (AFTER SWITCHING)
250mv @ 20A ON N.C. CONTACTS (AFTER SWITCHING)
MAXIMUM MAKE CURRENT: 90A/30A (LAMP) @ 16 VDC
MAXIMUM BREAK CURRENT: 40A/30A @ 16 VDC RESISTIVE
MAXIMUM CONTINUOUS CURRENT: 40A/30A @ 23°C , 35A/20A @ 85°C
INITIAL BREAKDOWN CURRENT 500V RMS CONTACTS TO COIL

EXPECTED LIFE: 100,000 OPERATIONS, 40 A, 14 VDC RESISTIVE ON NORMALLY OPEN CONTACT

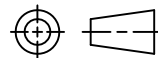
MECHANICAL CHARACTERISTICS:

EXPECTED LIFE: 10 MILLION OPERATIONS, NO CONTACT LOAD
TERMINALS BRASS, UNPLATED
ENCLOSURE EPOXY SEALED

DRAWN E.SIMPSON	APPROVAL B. TOEPFER	DATE 05-26-05	SCALE 1:1
--------------------	------------------------	------------------	--------------

CUSTOMER
TYCO_ELECTRONICS_STANDARD

TOLERANCE 0.X = +/-
 UNLESS 0.XX = +/-
 SPECIFIED 0.XXX = +/-
 OTHERWISE ANGLES = +/-



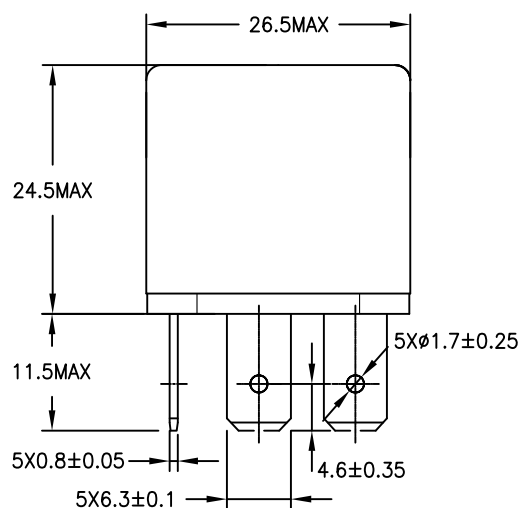
REV B

DO NOT SCALE THIS DRAWING

MILLIMETERS

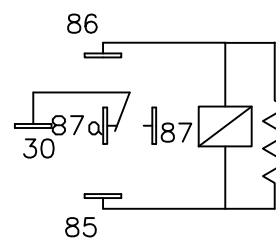
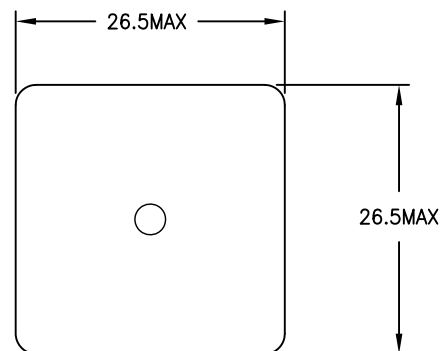
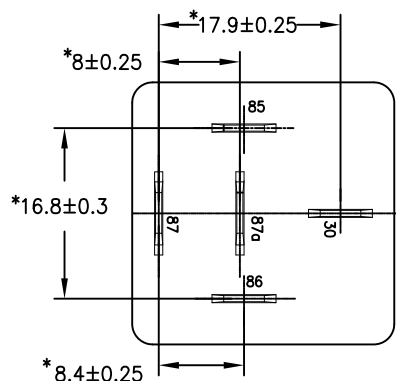
MARKING TO INCLUDE:

TYCO ELECTRONICS NAME, TYCO ELECTRONICS PART NUMBER, SCHEMATIC, COIL VOLTAGE, COUNTRY OF ORIGIN, AND DATE CODE



K

K ASPECT



SCHEMATIC DRAWING
(BOTTOM VIEW)

* TERMINAL LOCATIONS
APPLY AT THE BASE
OF THE TERMINALS