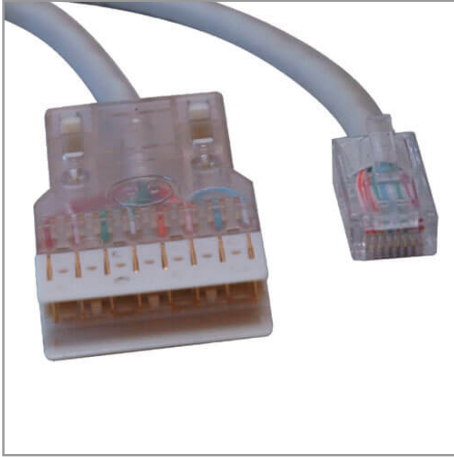




Tripp Lite
1111 W. 35th Street
Chicago, IL 60609 USA
Telephone: 773.869.1234
www.tripplite.com

Cat5e 350 MHz (UTP) Ethernet Cable (RJ45M/110) - Gray, 25 ft.

MODEL NUMBER: **N017-025-GY**



Highlights

- RJ45 to 110, 25ft
- Easily connects to 110 Punch Down blocks
- Cat5e 100mb rated

Package Includes

25ft RJ45 to 110 Cat5e Patch Cable

Description

Tripp Lite's N017-025-GY, RJ45 to 110 Patch Cable, is made with 4-pair stranded Cat5e cable, and allows patching from equipment to 110 type connecting blocks, or connecting test equipment to a 110 patch bay.

Features

- RJ45 to 110, 25ft
- 4-pair stranded Cat5e patch cable
- Gray PVC jacket

Specifications

OVERVIEW	
UPC Code	037332142382
INPUT	
Cable Length (ft.)	25
Cable Length (m)	7.6
Cable Length (in.)	300
Cable Length (cm)	762
PHYSICAL	
Cable Shielding	UTP
Color	Gray



Tripp Lite
1111 W. 35th Street
Chicago, IL 60609 USA
Telephone: 773.869.1234
www.tripplite.com

Shipping Dimensions (hwd / cm)	27.94 x 17.78 x 1.27
Shipping Dimensions (hwd / in.)	11.00 x 7.00 x 0.50
Shipping Weight (kg)	0.34
Shipping Weight (lbs.)	0.75
Snagless Connector	No
Wire Type	Stranded
CONNECTIONS	
Side A - Connector 1	RJ45 (MALE)
Side B - Connector 1	110 (MALE)
FEATURES & SPECIFICATIONS	
Technology	Cat5/5e
WARRANTY	
Product Warranty Period (Worldwide)	Lifetime limited warranty

© 2020 Tripp Lite. All rights reserved. All product and company names are trademarks or registered trademarks of their respective holders. Use of them does not imply any affiliation with or endorsement by them. Tripp Lite has a policy of continuous improvement. Specifications are subject to change without notice.

Tripp Lite uses primary and third-party agencies to test its products for compliance with standards. See a list of Tripp Lite's testing agencies:

<https://www.tripplite.com/products/product-certification-agencies>